



---

# 2025 STUDY OF COLLECTIONS FELLOWSHIP DONOR IMPACT REPORT



asor

UNEARTHING THE PAST SINCE 1900



# DONOR IMPACT SUMMARY

---

2025

\$4,000

Awarded for  
fellowships

2

Number of  
fellowship  
recipients

## RECIPIENTS AND THEIR PROJECTS

---

Laura Alvarez- “Me and We in the Mirror. A Study of Self and Other from Mesopotamia to the Levantine Coast during the Fourth and Second Millennia BCE,” Louvre Museum and the Baghdad Museum

Erin Darby- “Missing Ritual Objects from the Nelson Glueck Excavations of Kheleifeh,” American Society of Overseas Research archives at the American Heritage Center



asor



## LAURA ALVAREZ



**Diffusion map of mirrors**

At the Louvre, I investigated ten mirrors from Sidon, acquired through the work of Louvre curator Eugène Ledrain, who aimed to expand the French knowledge of Levantine culture with the institutional objective of enriching the museum's collections. I also studied mirrors from the coastal site of Ugarit (Ras Shamra), brought to Paris in the course of French excavations during the colonial and mandate periods of the early twentieth century. In examining these objects, I paid particular attention to any surviving traces of engraved decoration, similar to those I have observed on mirrors from the Diyala region in Iraq.

The ASOR Study of Collections Fellowship provided the critical final support needed to complete the data collection phase of my project, which aims to reconstruct the experiences of people interacting with mirrors, seeking insights into their perceptions of reflections and the symbols matched to these objects. The ultimate goal of this project is to produce a monograph, the *Corpus Speculorum Orientis*, restoring to this material a scholarly standing long minimized.





# 2025 RECIPIENT

---



## ERIN DARBY



A 2025 ASOR Collections Grant took Erin Darby to Laramie, Wyoming where the American Heritage Center (AHC) houses the American Society of Overseas Research (ASOR) Archives (1900-2023) at the University of Wyoming. Since 2022, the AHC has been the caretaker of this important repository that includes not only documents associated with the history of ASOR but also several collections of records from American-led excavations from the early twentieth century. In her particular case, Erin was on the hunt for unpublished religious artifacts from the Nelson Glueck excavations at Tell el-Kheleifeh.

---

With the support of AHC staff this past June, Erin was able to excavate a number of unpublished artifacts from the archive and create a database of cultic remains from the site. Owing to the importance of the collection, the University of Tennessee and the AHC are teaming up this coming year to digitize the site's artifact registration lists so that scholars from anywhere in the world who are interested in the objects from Kheleifeh will be able to identify the relevant records in the AHC holdings.

---





# Lifetime Donor Summary Impact



**\$34,000**

awarded in  
collections  
fellowships

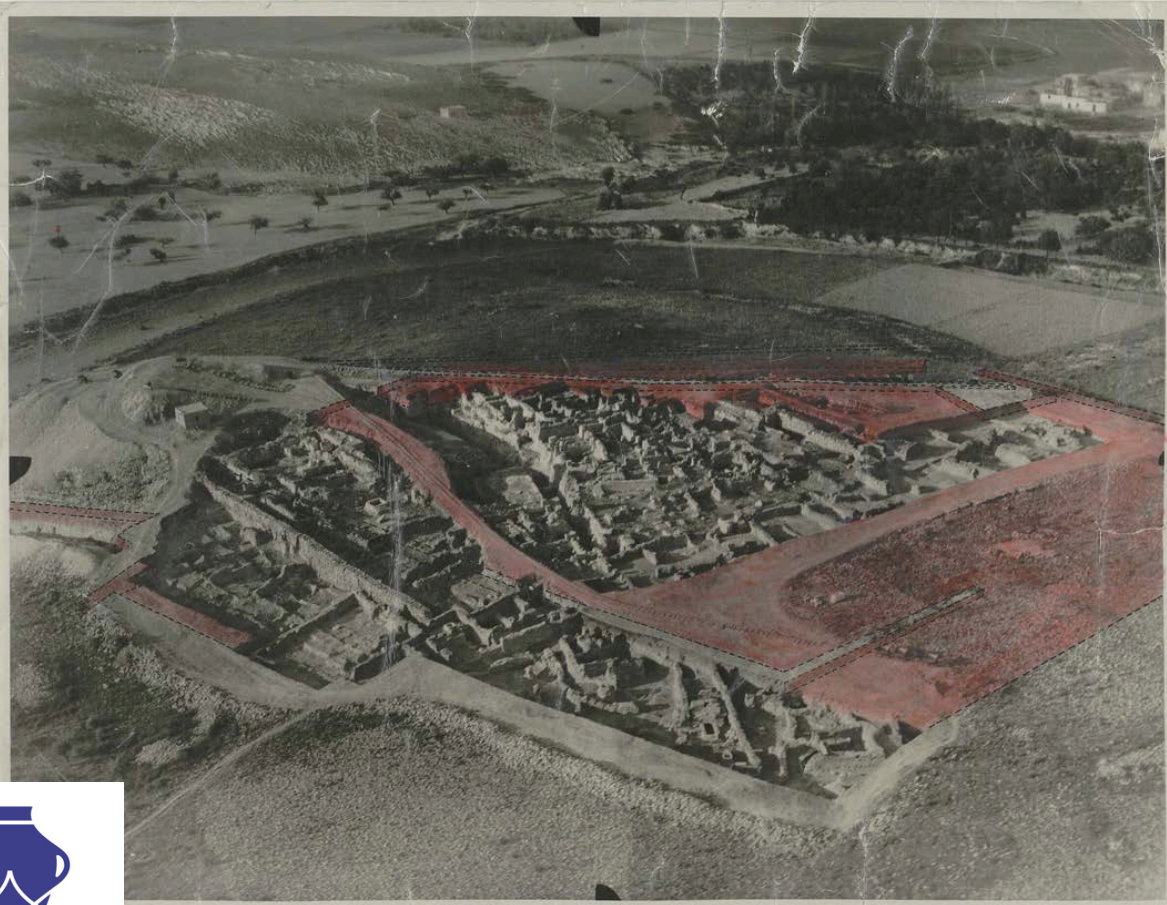
**17**

scholars  
awarded  
fellowships

Year	Recipient	Museum/Collection	Title of Project	Affiliation
2017	Lesley Gregoricka	University of Notre Dame	"Identity and Place of Burial in Early Bronze Age Jordan: A Biogeochemical Comparison of Charnel House Human Remains"	University of South Alabama
2017	Samuel Wolff	Palestine Exploration Fund, London	"Alan Rowe's 1934 Excavation at Tel Gezer"	Israel Antiquities Authority
2017	Gina Konstantopoulos	Iraq Museum	"Beyond the Frontier: the Construction of Distant and Imagined Lands in the Ancient Near East"	New York University
2018	Melissa Cradic	Oriental Institute Museum, University of Chicago	"Decoding Death: The Investigation of Bronze Age Tombs in the Levant"	University of California, Berkeley
2018	Morag Kersel	Multiple Universities and Museums	"Follow the Pots – Locating Early Bronze Age Tomb Groups from Bab adh-Dhra"	DePaul University
2019	Katherine Larson	Israel Museum	"The Roman Glass Workshop at Jalame, Israel: A Traveling Exhibition"	Corning Museum of Glass
2019	Joanna Smith	Museum of Marion and Arsinoe (Polis Chrysochous)	"Textile production in first millennium BCE Cyprus"	University of Pennsylvania
2022	Joseph A. Greene	Kelsey Museum Archives	"Michigan Excavations in the Carthage Sanctuary of Tanit"	Harvard Museum of the Ancient Near East
2022	James D. Moore	Cabinet du Corpus Inscriptionum Semiticarum in the Académie des Inscriptions et Belles-Lettres-Semitic Artifacts Database	"Imprints of the Past: Preserving the Largest Known and Uncatalogued Collection of Semitic Artifacts in Europe"	Humboldt-Universität zu Berlin
2022	Michael Press	British Museum, British Library, and the Palestine Exploration Fund	"The Antiquities Market in Late Ottoman Palestine"	University of Agder
2022	Matthew J. Suriano	Cabinet du Corpus Inscriptionum Semiticarum in the Académie des Inscriptions et Belles-Lettres-Clermont-Ganneau Collection	"The Unpublished Materials of Charles Clermont-Ganneau"	University of Maryland



Year	Recipient	Museum/Collection	Title of Project	Affiliation
2023	Helen Dixon	Carthage National Museum, Tunisia	"Study of Punic inscribed stelae with maritime iconography in the collection of the Carthage National Museum, Tunisia"	East Carolina University
2023	Jon Paul Heyne	Franciscan Archivio Storico della Custodia di Terra Santa	"Social Mobility of Religious Minorities in the Medieval Mediterranean: The Case of the Franciscans of the Holy Land Custody"	University of Dallas
2024	Jennie Ebeling	Badè Museum of Biblical Archaeology	"Analysis of Ground Stone Artifacts from Tell en-Nasbeh, Palestine"	University of Evansville
2024	Holly Winter	Harvard Museum of the Ancient Near East	"The Land Behind Aleppo: Urban Life and State Formation in Bronze Age Syria"	University of Sydney
2025	Laura Alvarez	Louvre Museum and the Baghdad Museum	"Me and We in the Mirror. A Study of Self and Other from Mesopotamia to the Levantine Coast during the Fourth and Second Millennia BCE"	University of Cambridge
2025	Erin Darby	American Society of Overseas Research archives at the American Heritage Center	"Missing Ritual Objects from the Nelson Glueck Excavations of Kheleifeh"	University of Tennessee



asor





THANK YOU FOR  
YOUR CONTINUED  
SUPPORT!

---

