



# ASOR Cultural Heritage Initiative

QGIS

## Module 02.08: Layers

Jared Koller | William Reynolds



## ASOR QGIS Module 02.08 – Layers

QGIS is a free and open source Geographic Information System (GIS), or geodatabase, licensed under the GNU General Public License. QGIS runs on Linux, Unix, Mac OSX, Windows and Android and supports numerous vector, raster, and database formats and functionalities. Download QGIS here: <https://qgis.org/>.

QGIS users can view, edit, and analyze spatial information through its free software toolkit.

This **ASOR Tutorial (02.08)** will provide an overview of how to understand and use data layers in QGIS.

## KEY CONCEPTS

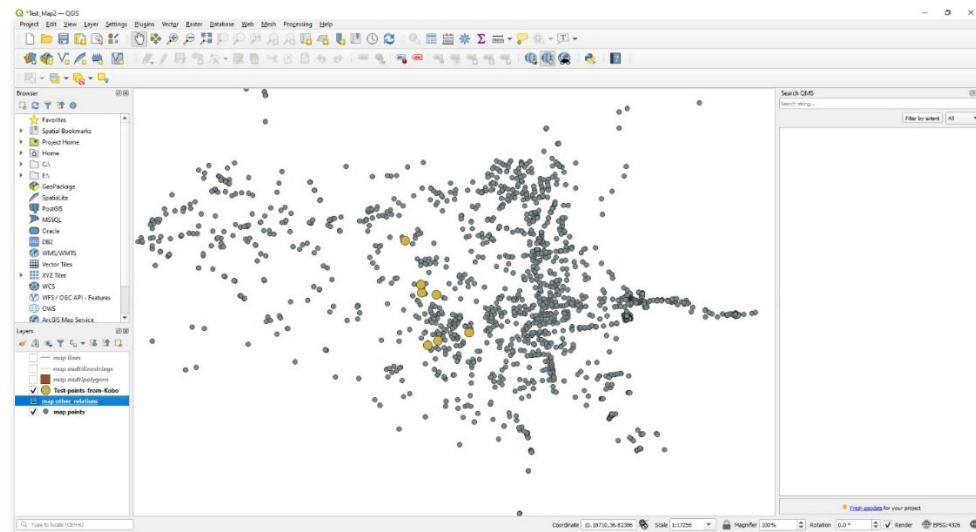
- ❖ What type of data layers are available in QGIS
- ❖ Moving and hiding layers

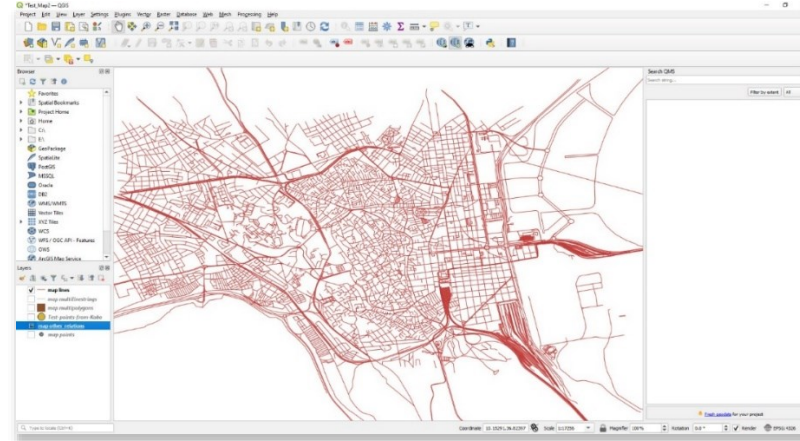
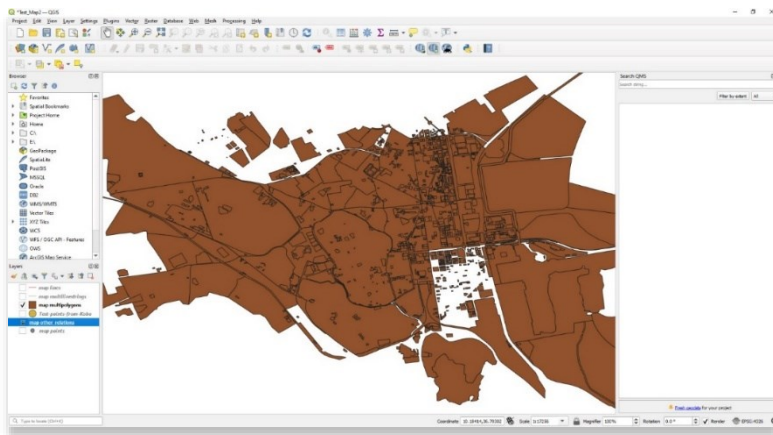
## LAYER TYPES

GIS projects can contain three types of data: (1) Spatial, (2) Raster, and (3) Terrain/Elevation Models

## Vector Data

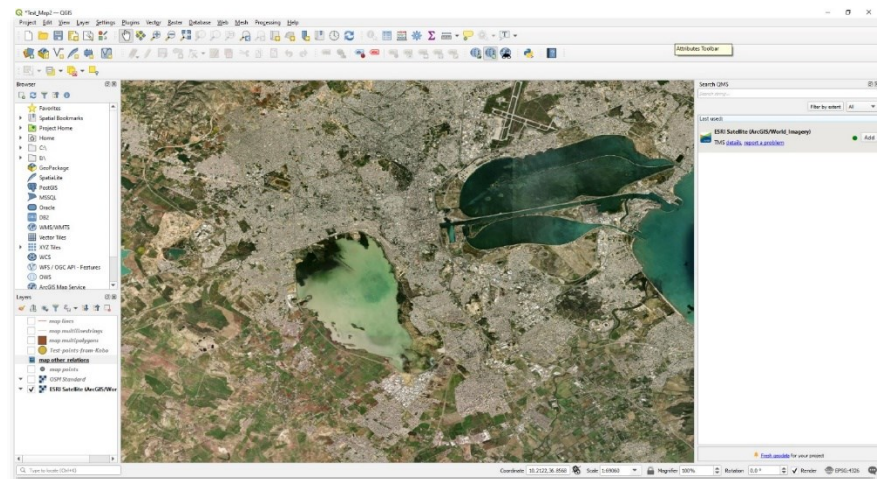
## Points, Lines, and Polygons



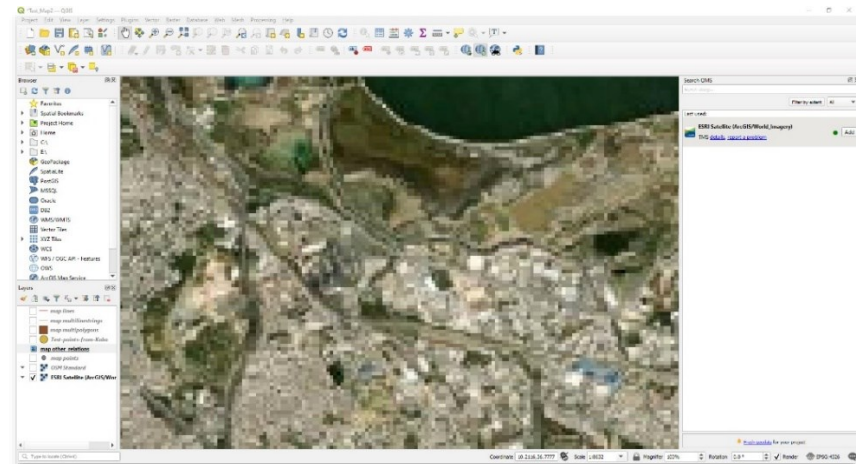


## Raster / Images

1. Raster or "grid" data can be used to display gradients of spatial data e.g., elevation, population, artifact density...etc.
2. Examples include remote sensing data, scans of maps, or other photos. This is a type of raster data where the number in each cell describes a specific color that are stitched together to form an image.

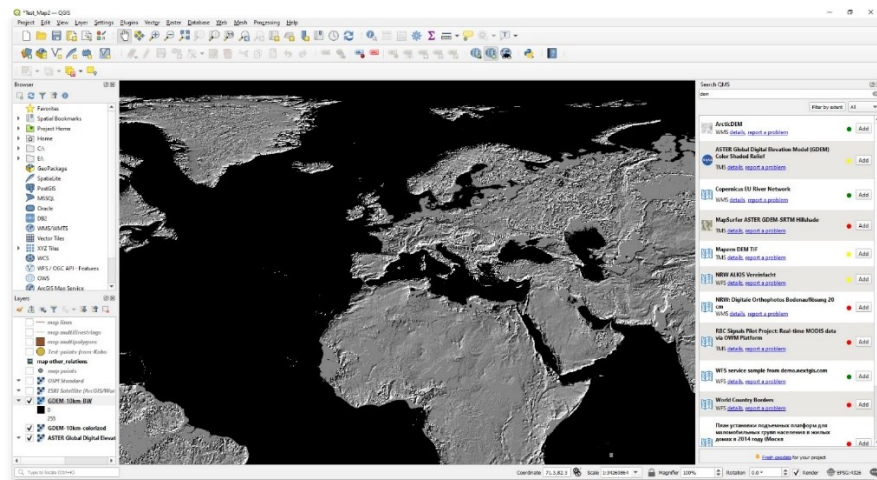


3. Raster data are grids of information, with each cell containing attribute (description, non-spatial) data. If you zoom in on the satellite image above, you can see the distinct cells (or pixels).



## Terrain and Elevation Models

1. Datasets built from lidar and other point clouds.
2. Provide topographic maps of landscapes.



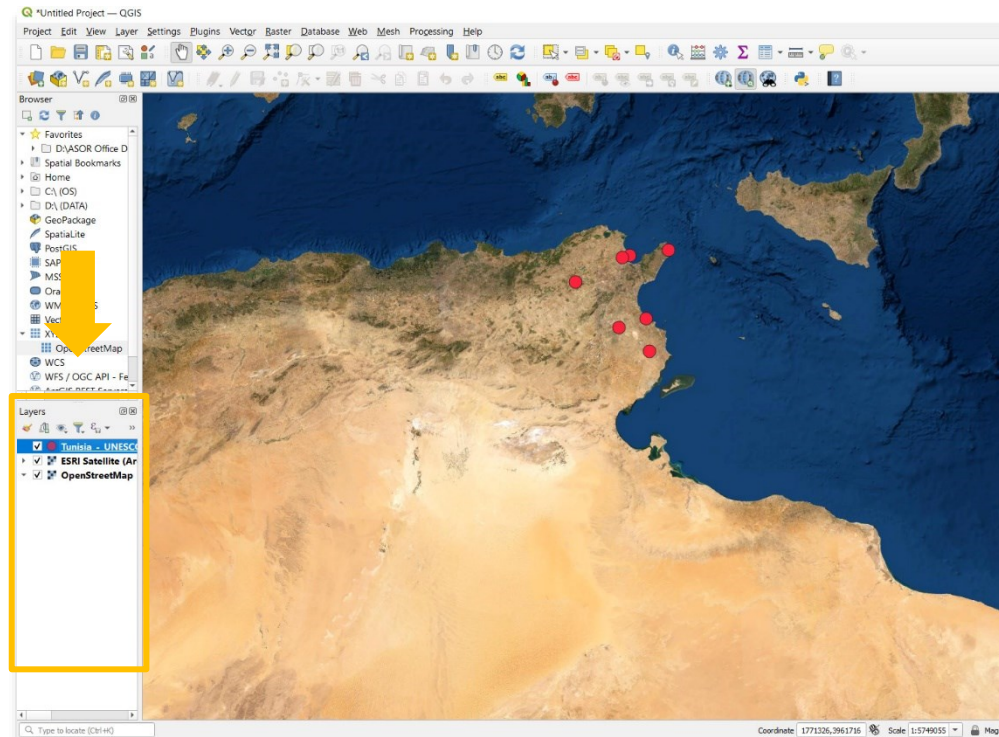
# CHANGING DATA LAYER VISIBILITY

## Moving & Hiding Layers

### Layers Panel

All data layers that are currently visible for this project are listed in the Layers panel in the bottom left of your project.

The layers will appear in the order they are listed. In the example, the Kobo CSV layer (red dots) is at the top of the list, thus it is visible.

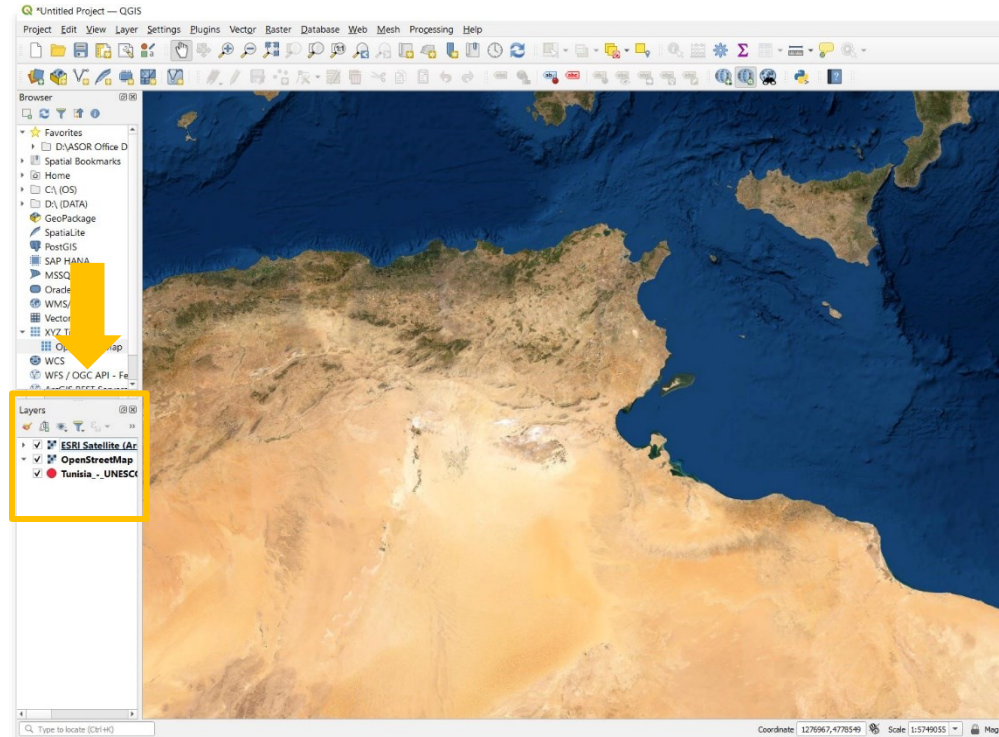




## Moving Layers

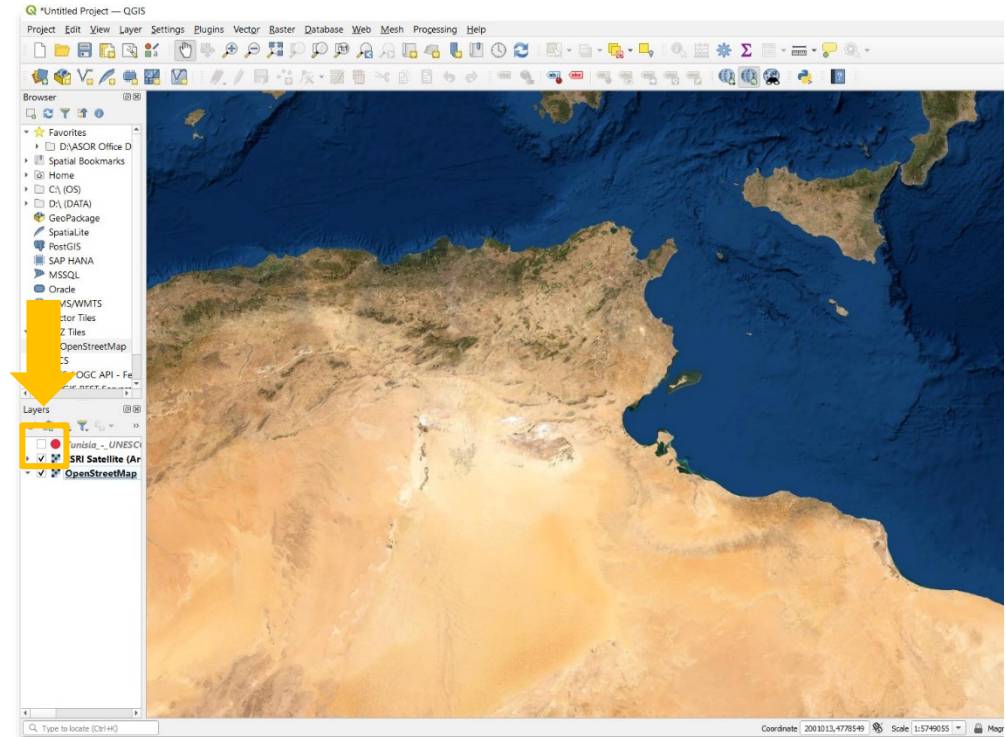
Move data layers with your mouse by left-clicking on a specific layer and dragging it lower on the list.

In the example, the “test points from Kobo” layer (red dots) has been moved below the “Map multipolygons” layer (brown polygons) and is now hidden from view.



## Hide Layers

You can also hide data layers without changing their order in the Layers panel, by unchecking the box next to each layer.





## RESOURCES

QGIS Download: <https://qgis.org/>



VIEW ALL ASOR TUTORIALS FOR FREE

[asor.org/chi/chi-tutorials](https://asor.org/chi/chi-tutorials)