



ASOR Cultural Heritage Initiative

QGIS

Module 02.07: Adding a Basemap

Jared Koller | William Reynolds



ASOR QGIS Module 02.07 – Adding a Basemap

QGIS is a free and open source Geographic Information System (GIS), or geodatabase, licensed under the GNU General Public License. QGIS runs on Linux, Unix, Mac OSX, Windows and Android and supports numerous vector, raster, and database formats and functionalities. Download QGIS here: <https://qgis.org/>.

QGIS users can view, edit, and analyze spatial information through its free software toolkit.

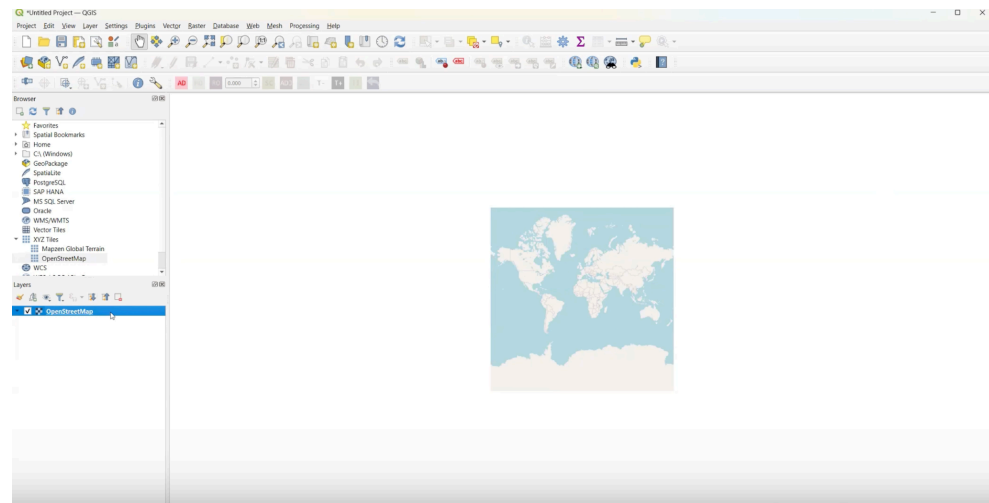
This **ASOR Tutorial (02.07)** will demonstrate how to add a basemap to a QGIS project on a desktop computer or laptop.

KEY CONCEPTS

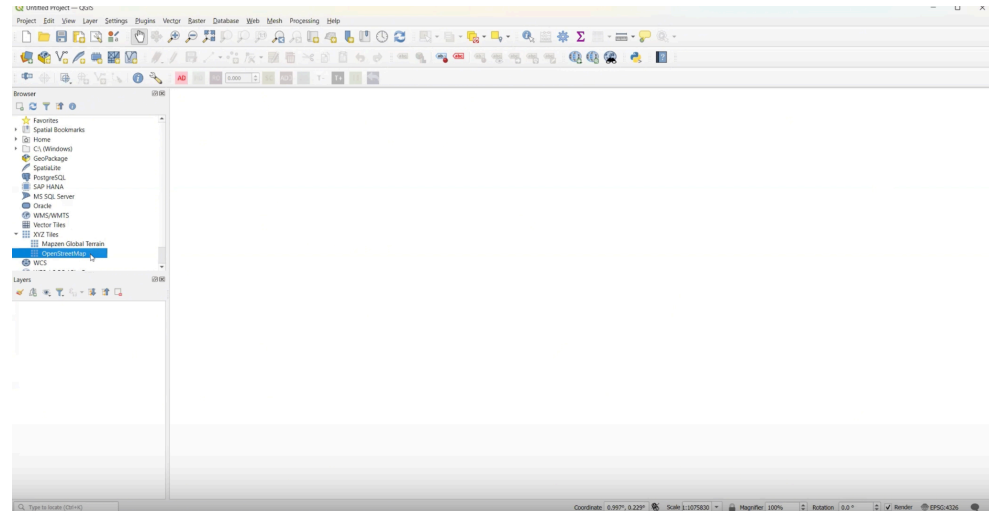
- ❖ Understanding Basemaps offered by QGIS
- ❖ Navigating and opening OpenStreetMap basemap
- ❖ Investigating properties of a layer

BASEMAP

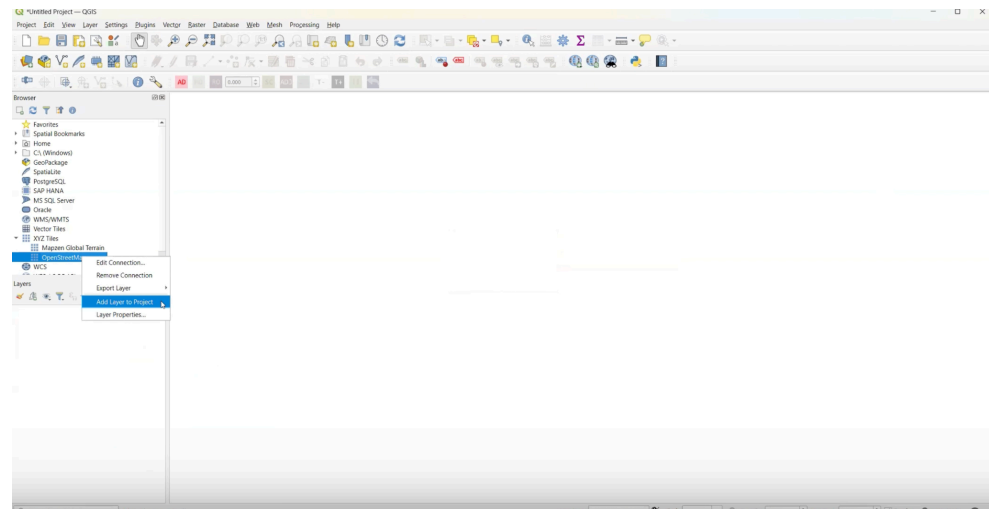
Basemaps are often the first layers added at the start of a GIS project. They are useful for checking the geolocation of imported data, such as those collected from KoboCollect (see ASOR Tutorials about KoboToolbox).



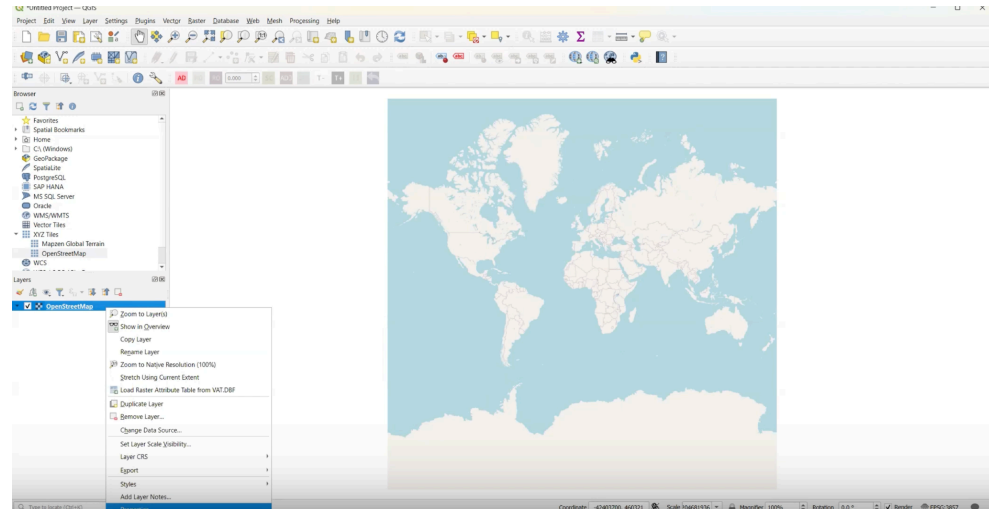
QGIS includes a standard basemap provided by OpenStreetMap. To add that map to your project, choose the XYZ Tiles directory in your Browser Panel, then select OpenStreetMap.



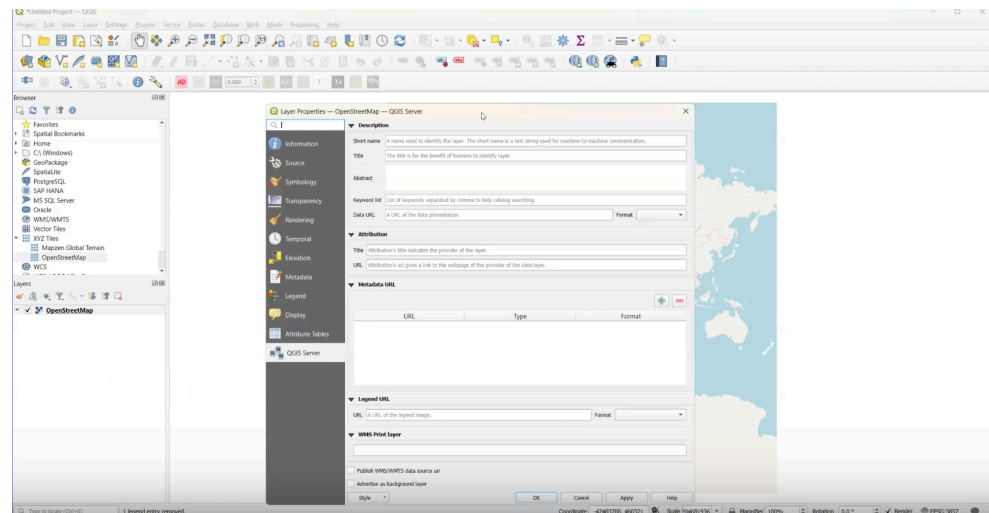
Add the OpenStreetMap basemap layer to your project by double-clicking on the file, dragging the file into your Main Map Area, or right-click on the file and select Add Layer to Project.



Right click on any OpenStreetMap layer to toggle properties.



In Properties you can adjust each layer including elements like CRS, transparency, and more.



RESOURCES

QGIS Download: <https://qgis.org/>

Next Module:

Previous Module:



VIEW ALL ASOR TUTORIALS FOR FREE

asor.org/chi/chi-tutorials