



asor
CULTURAL HERITAGE INITIATIVES

KOBO TOOLBOX

Collecting Data with an Internet Connection (01.06)

William Reynolds

Jared Koller

ABOUT KOBO TOOLBOX

KoBoToolbox is a free and open source software package for location and descriptive data collection. Information can be collected at heritage sites through tablets and phones using the KoBoCollect app or through the web browser interface, even when those devices are offline. Location and descriptive data recorded in the field can then be synched up with GIS software once an internet connection has been reestablished.

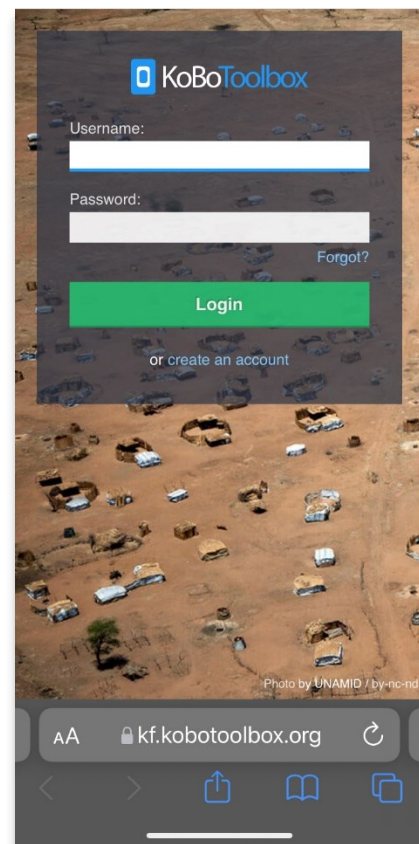
This **ASOR tutorial (01.06)** will cover how to collect data on a your phone, tablet, or computer using KoBoToolBox on a web browser.

WORKFLOW | DATA COLLECTION WITH AN INTERNET CONNECTION

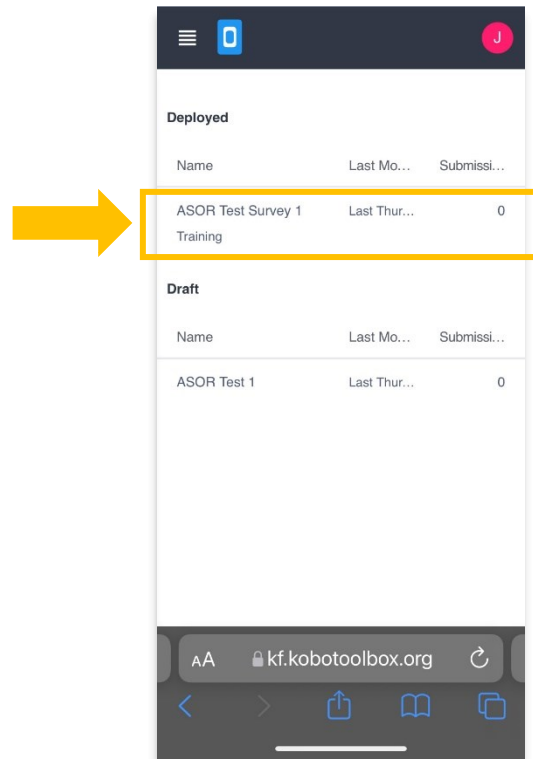
1. In a web browser on your phone, tablet, or computer, login to your KoBoToolBox Account:

<https://kf.kobotoolbox.org/accounts/login/>.

Use your Username and Password created in [ASOR Tutorial 01.01 \(Creating a KoBoToolBox User Account\)](#).

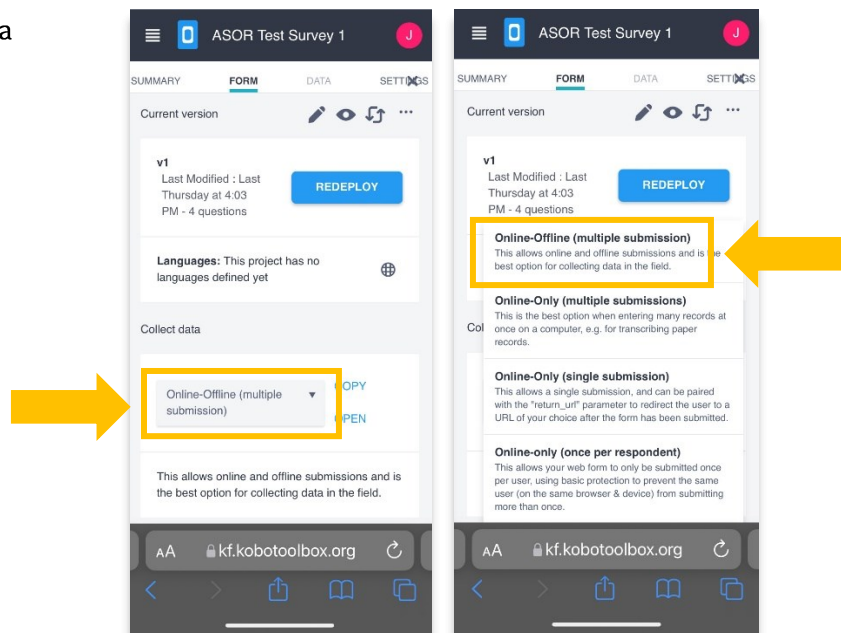


2. Select **ASOR Test Survey 1**.

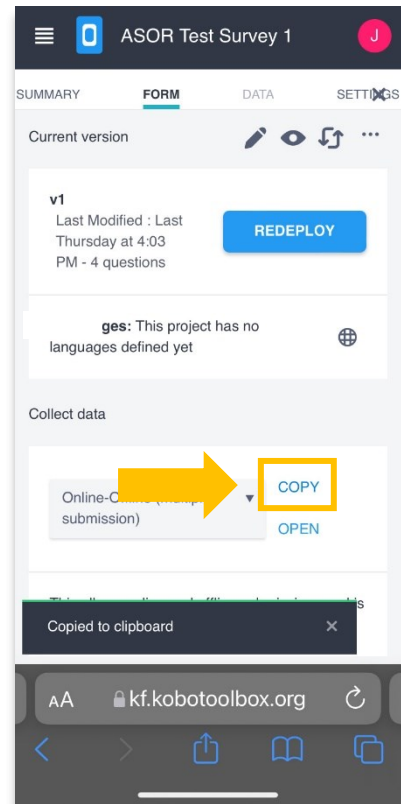


3. Click on the drop-down menu in the **Collect Data** section of your project.

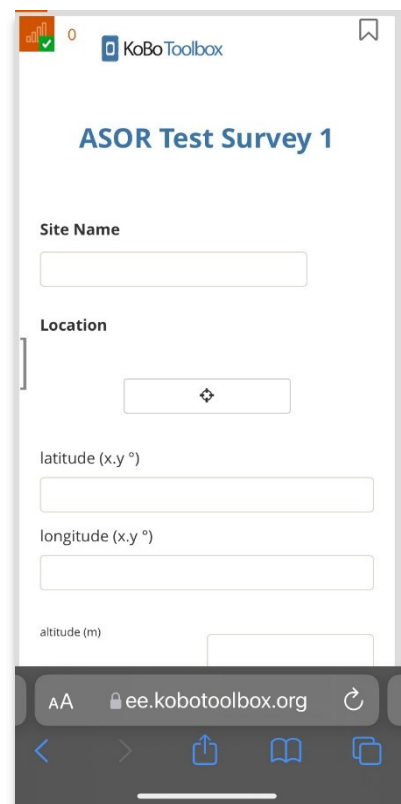
Select **Online-Offline (multiple submission)**.



4. Click on the **Copy** link within the **Collect Data** section.



5. In a new tab on your web browser, paste the copied link. This will open up a blank data collection form that is linked directly to your **ASOR Test Survey 1** project.



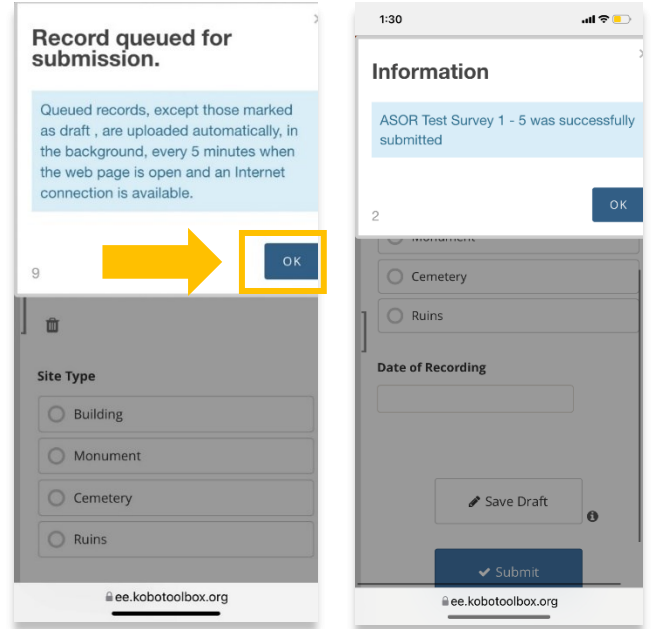
- Click **Submit** once you have finished entering data for this specific entry.

A pop-up message will appear informing you that your record has been saved.

Click the OK button to send that record to your KoBoToolBox project, **ASOR Test Survey 1**. *

* This process requires an internet connection.

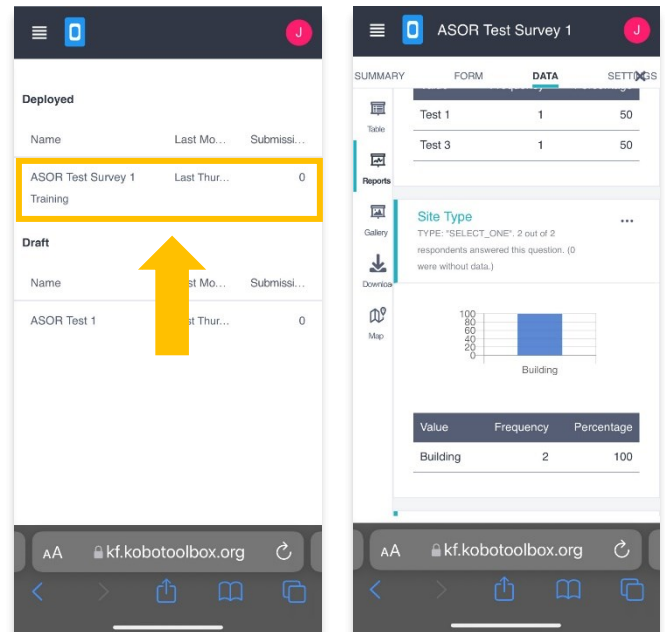
You will see a confirmation pop-up once the data has been successfully sent.



- In a web browser return to KoBoToolBox: <https://kf.kobotoolbox.org/accounts/login/>.

Click on your project and you will now be able to access the data that you collected.

You access this information on a phone, tablet or computer.





asor
CULTURAL HERITAGE INITIATIVES

VIEW ALL ASOR TUTORIALS FOR FREE

asor.org/chi/chi-tutorials