



QGIS

Accessing and Downloading Data from OpenStreetMap (02.06)

William Raynolds

Jared Koller

ABOUT QGIS & OPENSTREETMAP

QGIS is a free and open source Geographic Information System (GIS), or geodatabase, licensed under the GNU General Public License. QGIS runs on Linux, Unix, Mac OSX, Windows and Android and supports numerous vector, raster, and database formats and functionalities. QGIS users can view, edit, and analyze spatial and locational information through its free software toolkit.

Download QGIS here: <https://qgis.org/>

Documentation: <https://docs.qgis.org/3.16/en/docs/index.html>

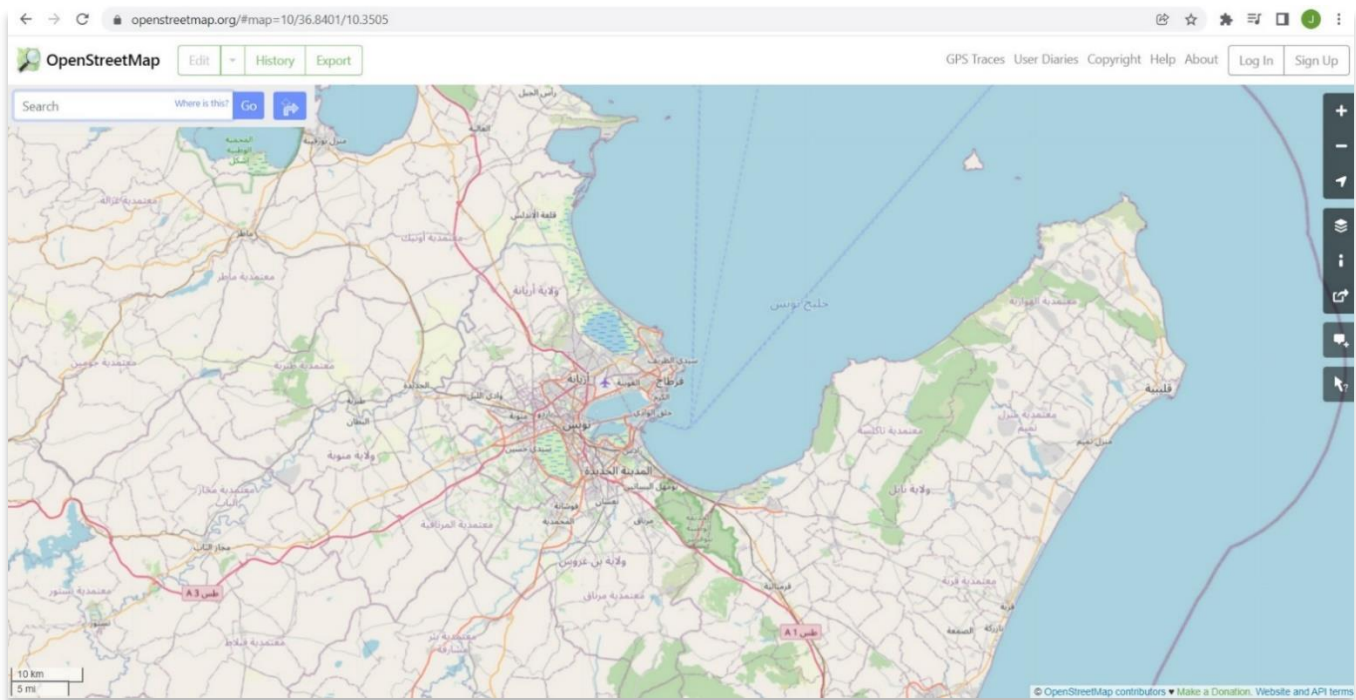
This **ASOR Tutorial (02.06)** will cover how to access and download data from OpenStreetMap that can be imported into QGIS.

OpenStreetMap (<https://www.openstreetmap.org/>) is built by a community of mappers that contribute and maintain data about roads, trails, cafés, railway stations, and much more, all over the world. This website emphasizes local knowledge. Contributors use aerial imagery, GPS devices, and low-tech field maps to verify that OSM is accurate and up to date.

OpenStreetMap's contributors include enthusiast mappers, GIS professionals, engineers running the OSM servers, humanitarians mapping disaster-affected areas, and many more. OpenStreetMap is open data: you are free to use it for any purpose as long as you credit OpenStreetMap and its contributors. If you alter or build upon the data in certain ways, you may distribute the result only under the same license.¹

WORKFLOW

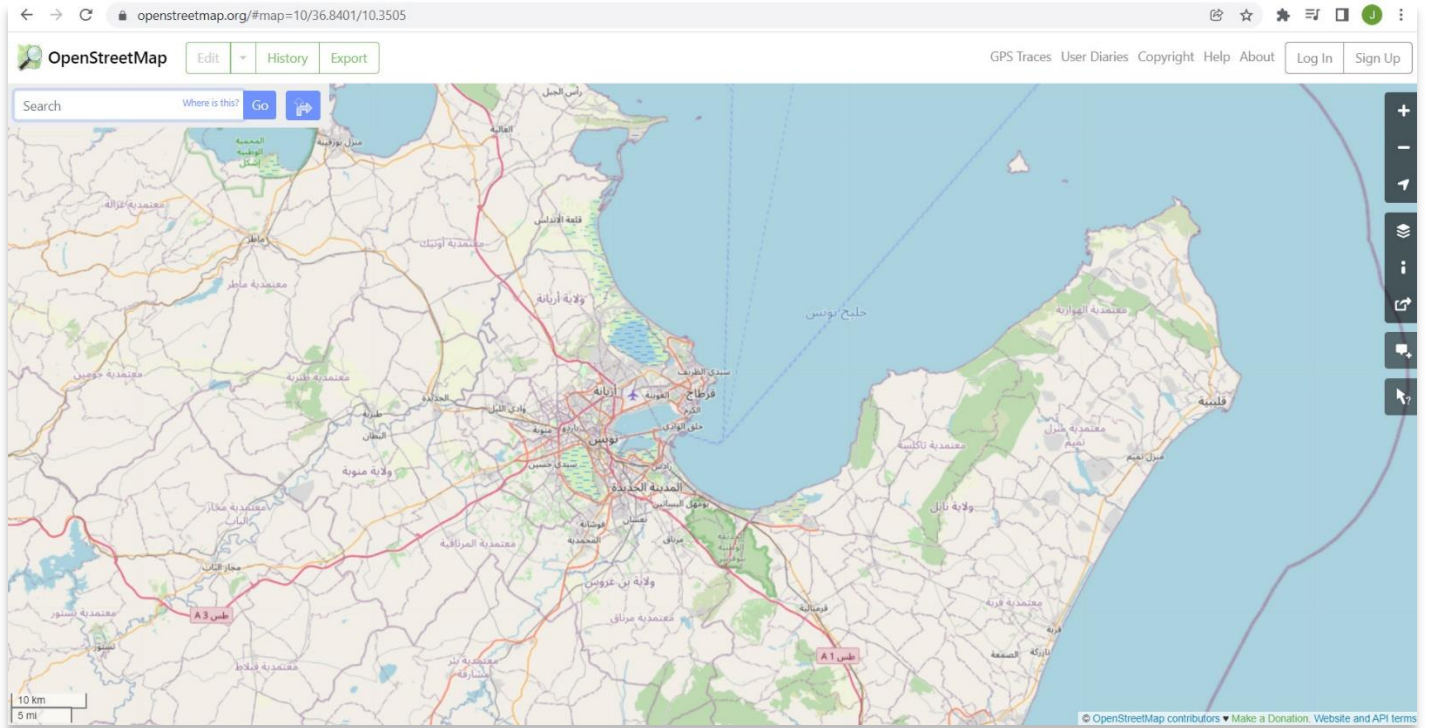
1. In a web browser, navigate to the OpenStreetMap website: <https://www.openstreetmap.org>.



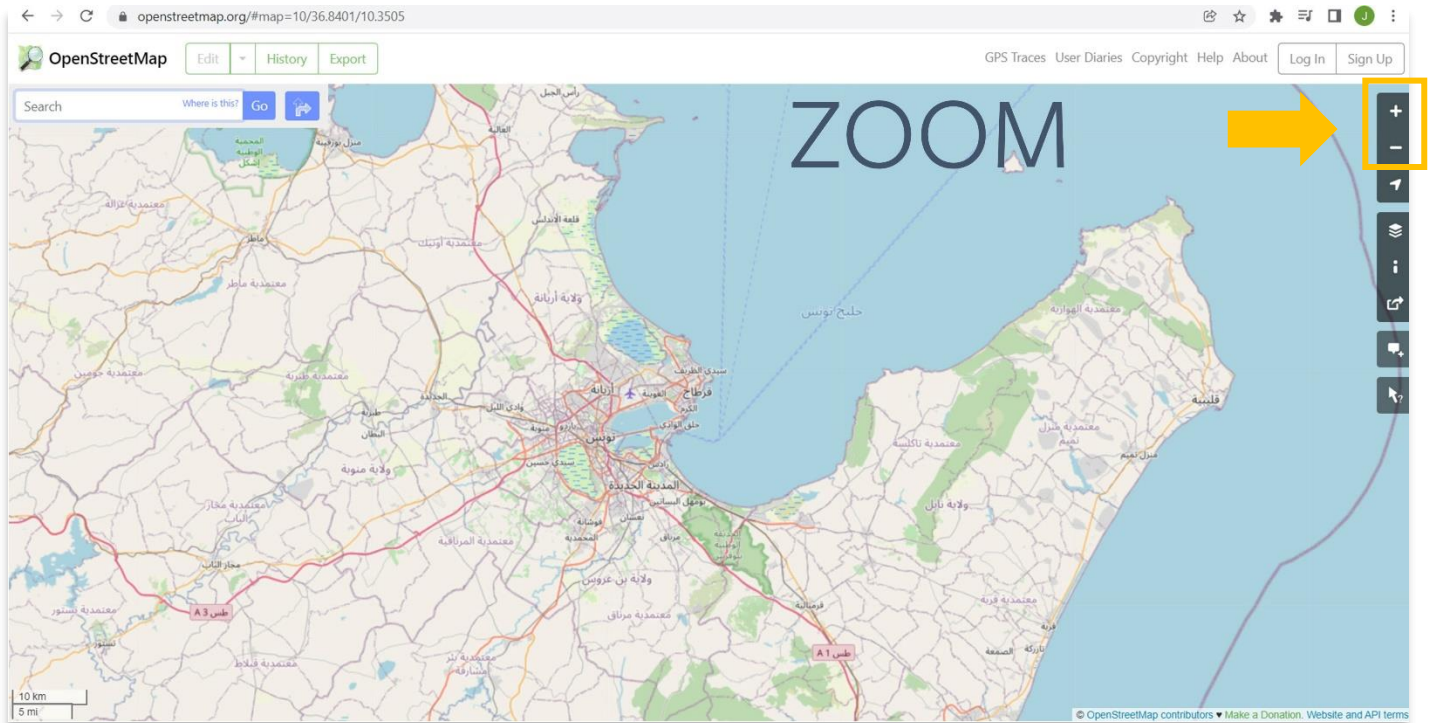
¹ Source: OpenStreetMap About Page. <https://www.openstreetmap.org/about>. Accessed January 15, 2022.

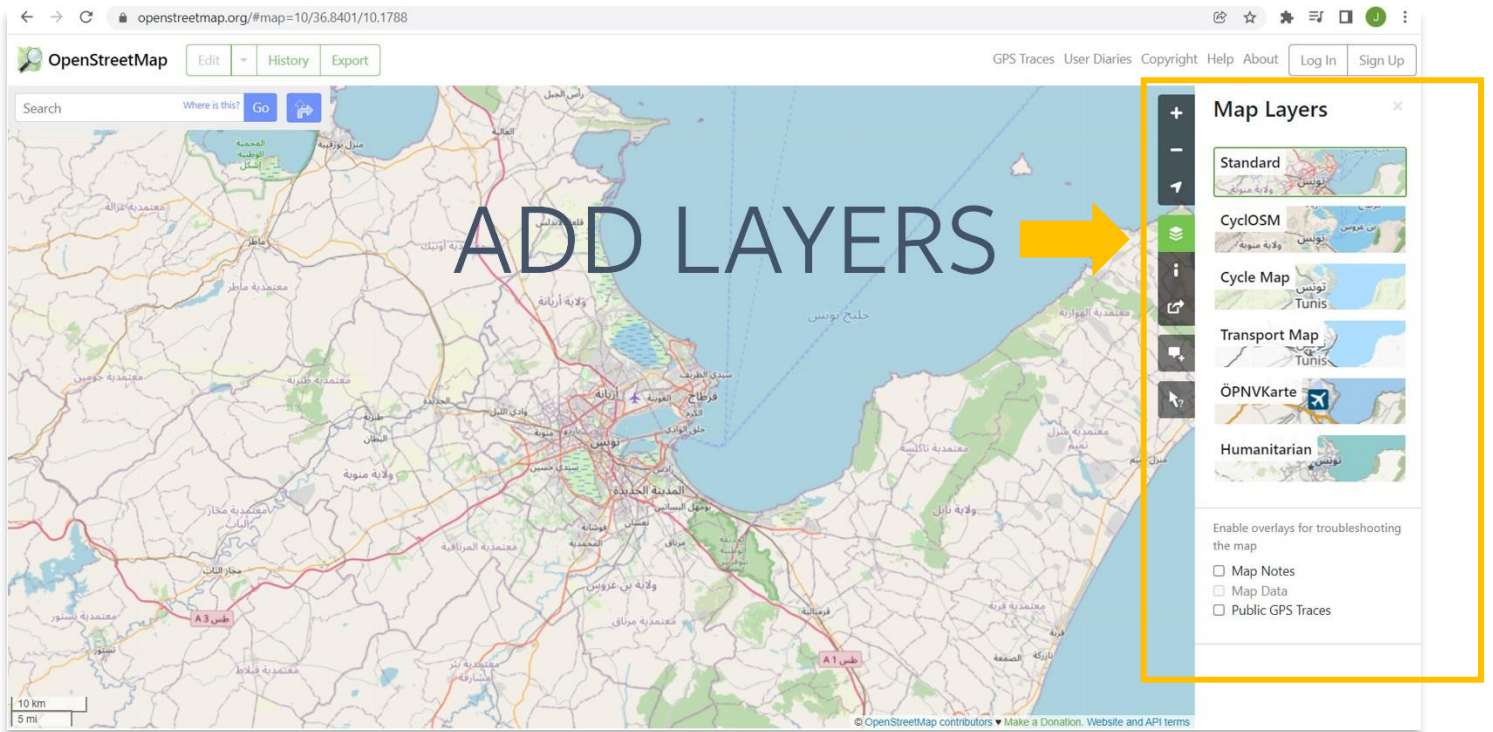
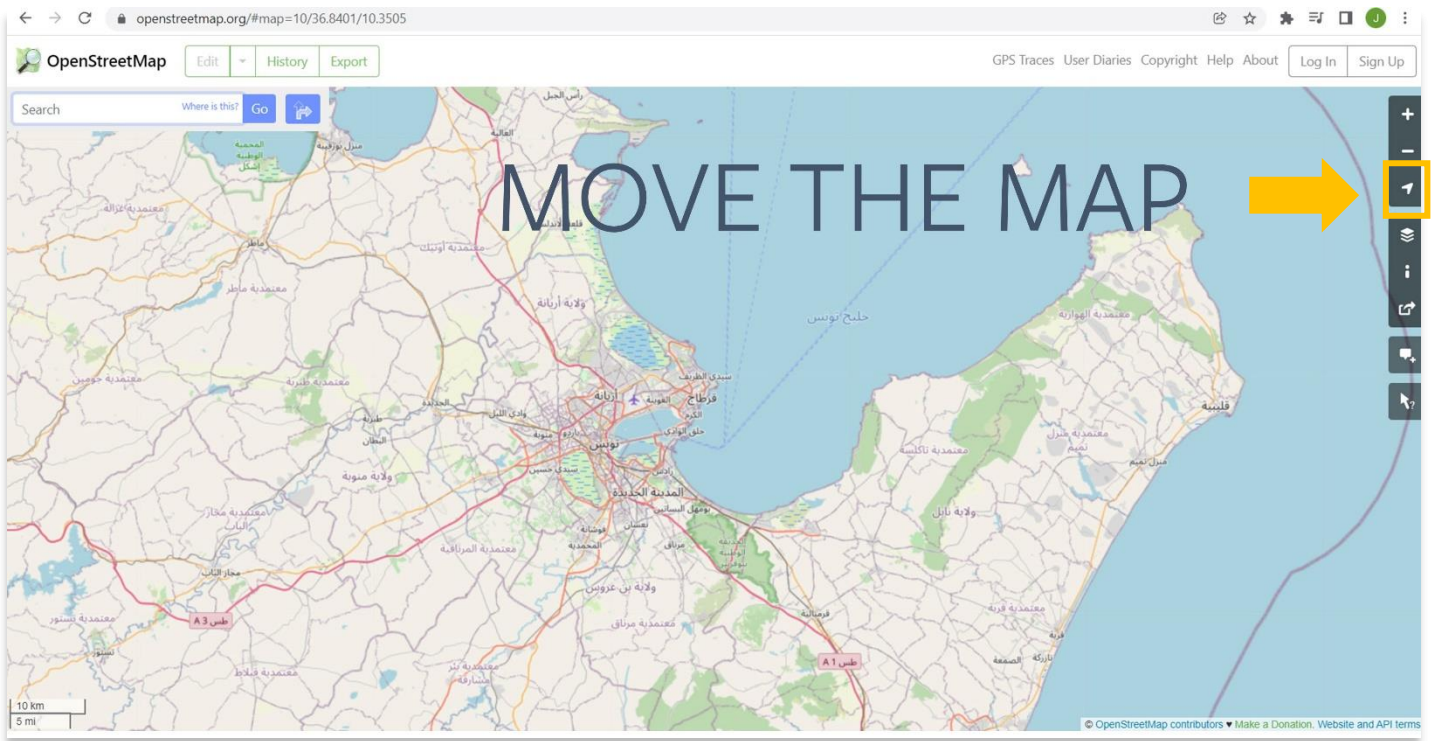
2. Navigating the map with your mouse:

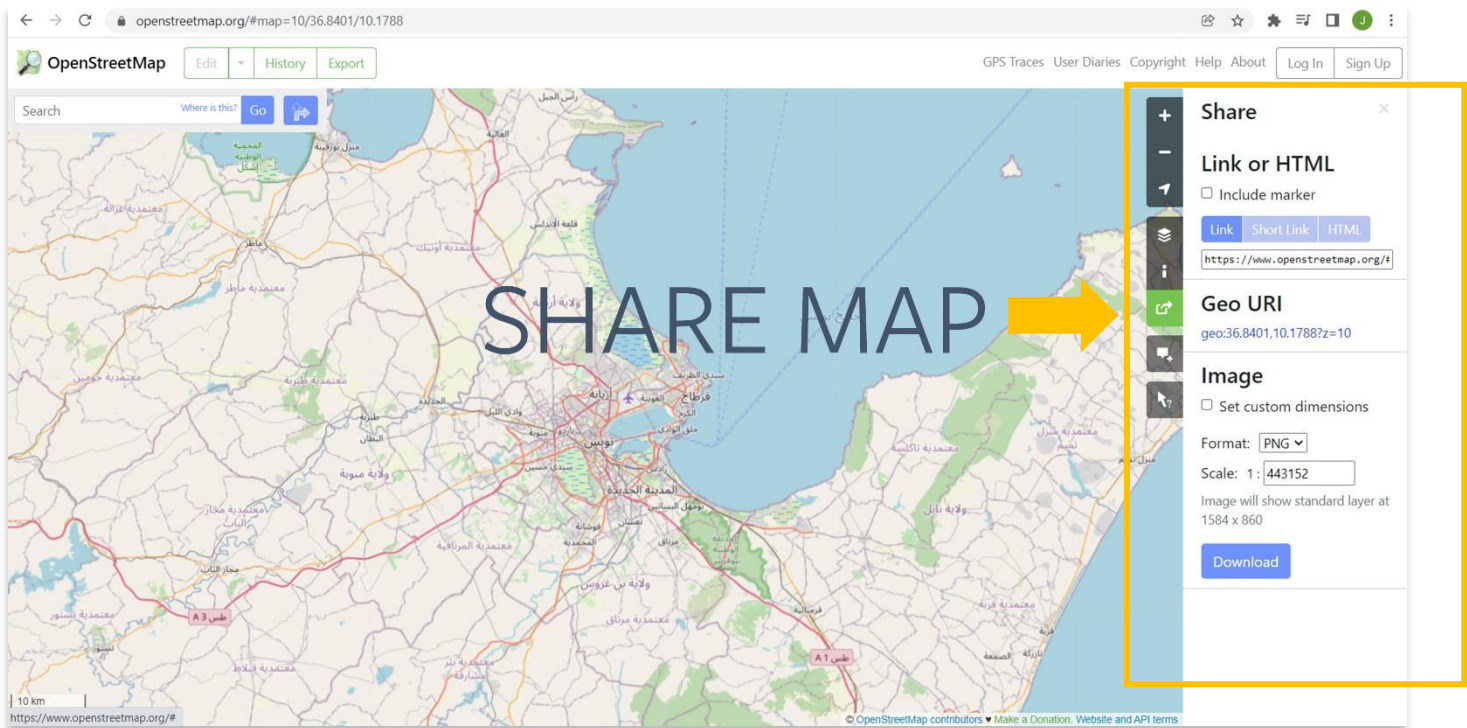
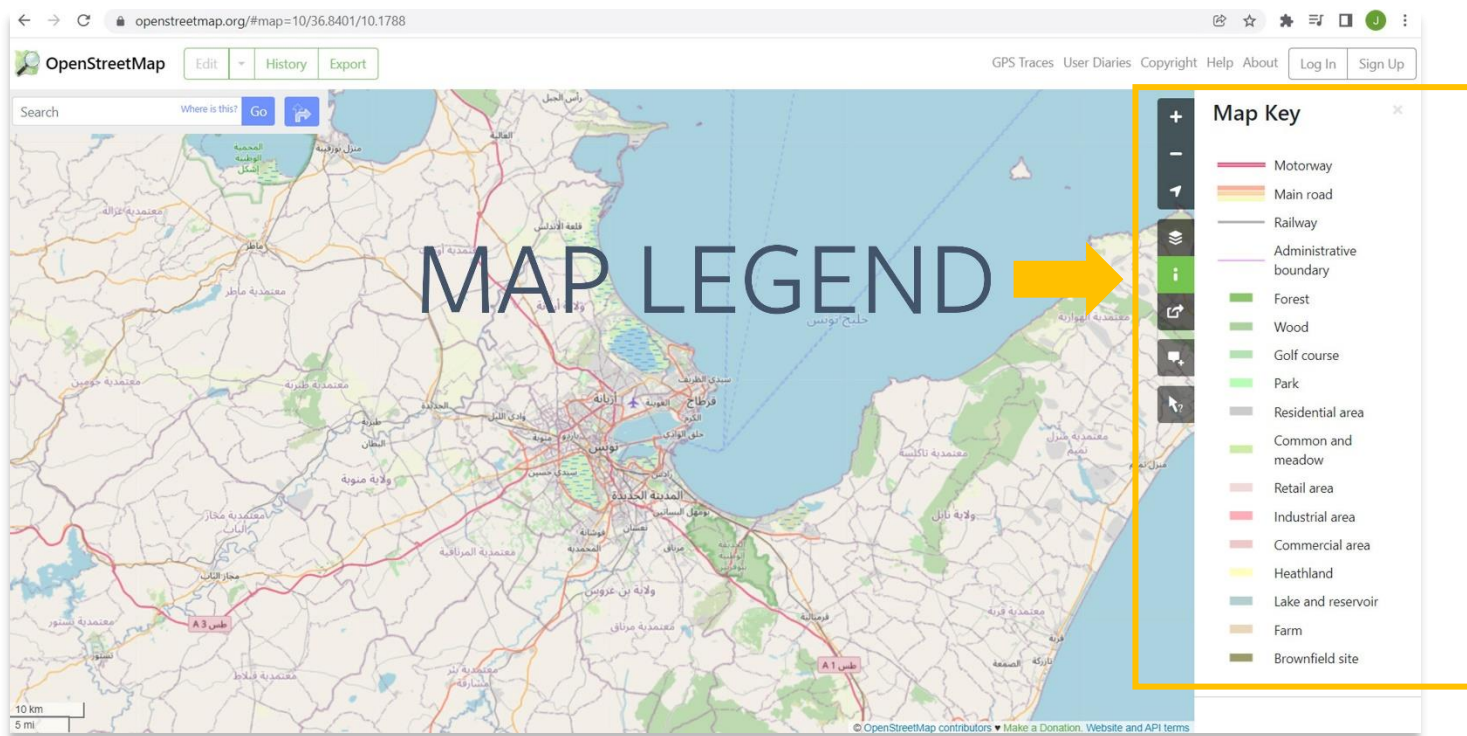
- i. Moving the map: You can change your view by clicking on the map and dragging.
- ii. Zooming in/out: If your mouse has a scroll wheel, you can use that to zoom in and out of the frame.

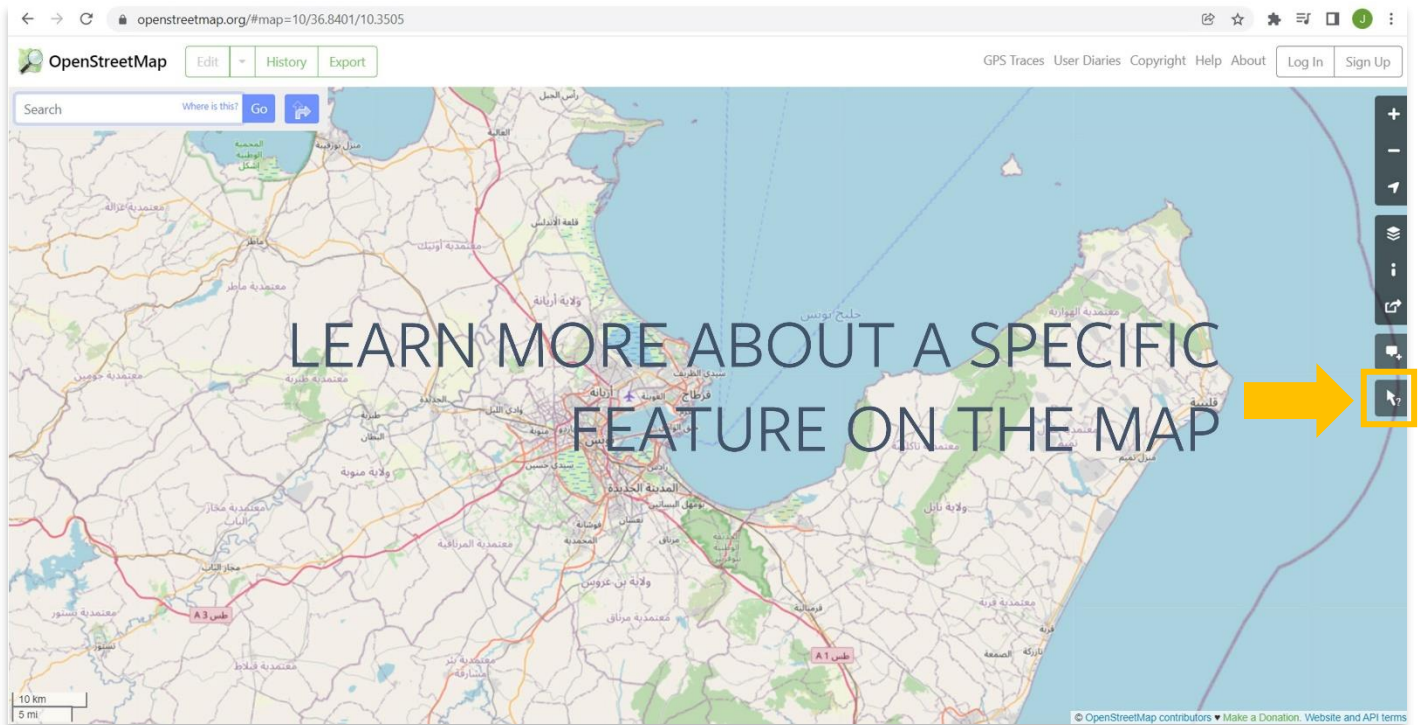
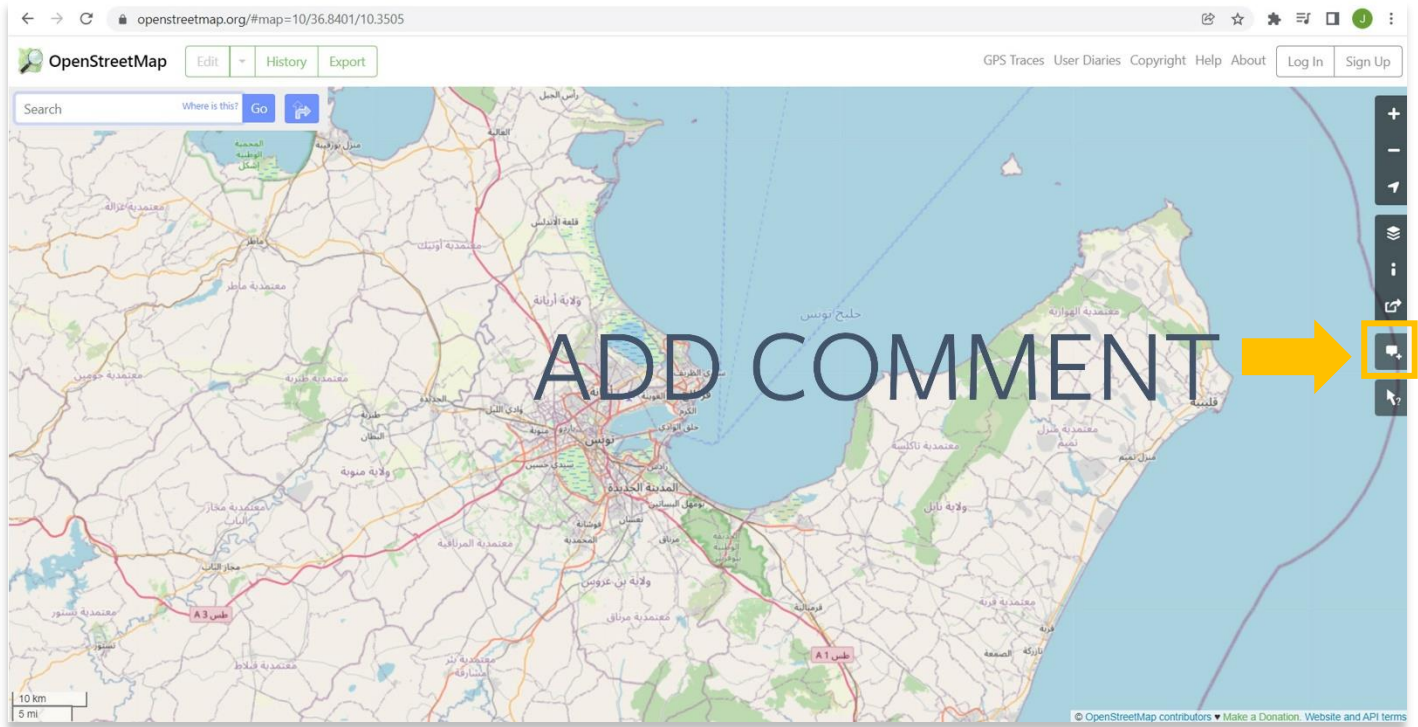


3. The toolbar on the right also allows users to navigate the map, share information, and find out more information about existing data on the map.

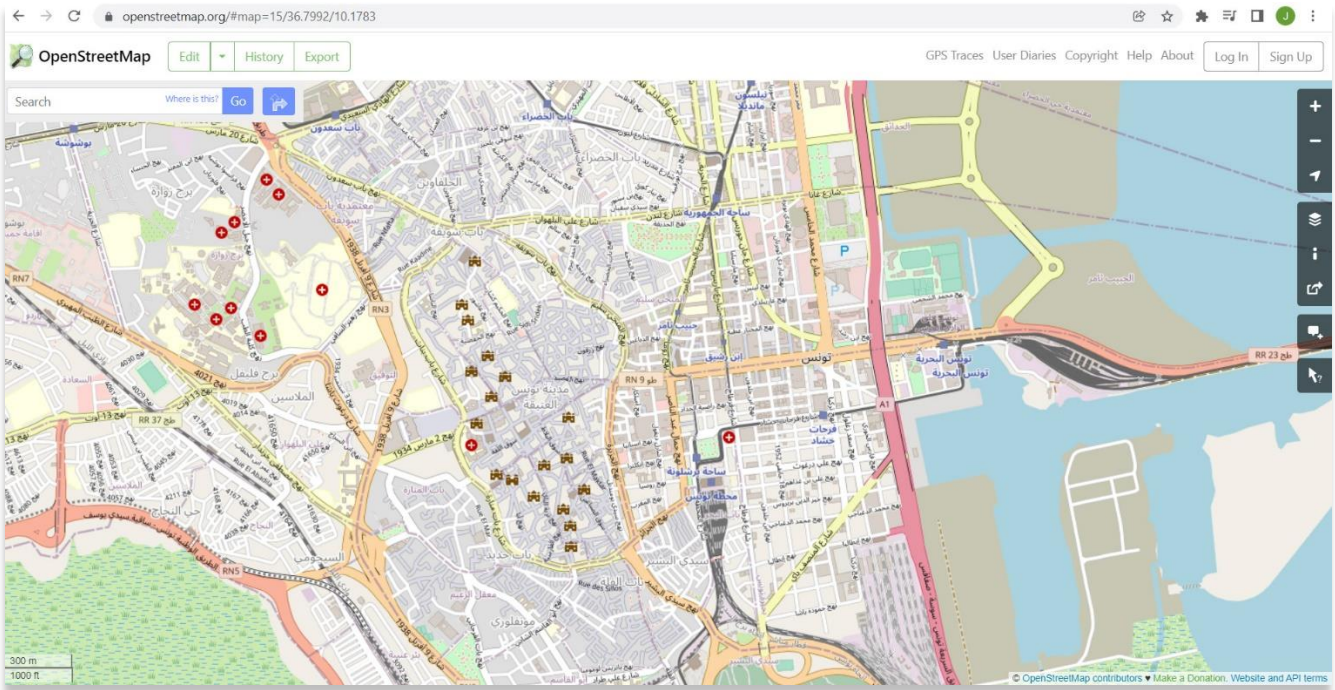




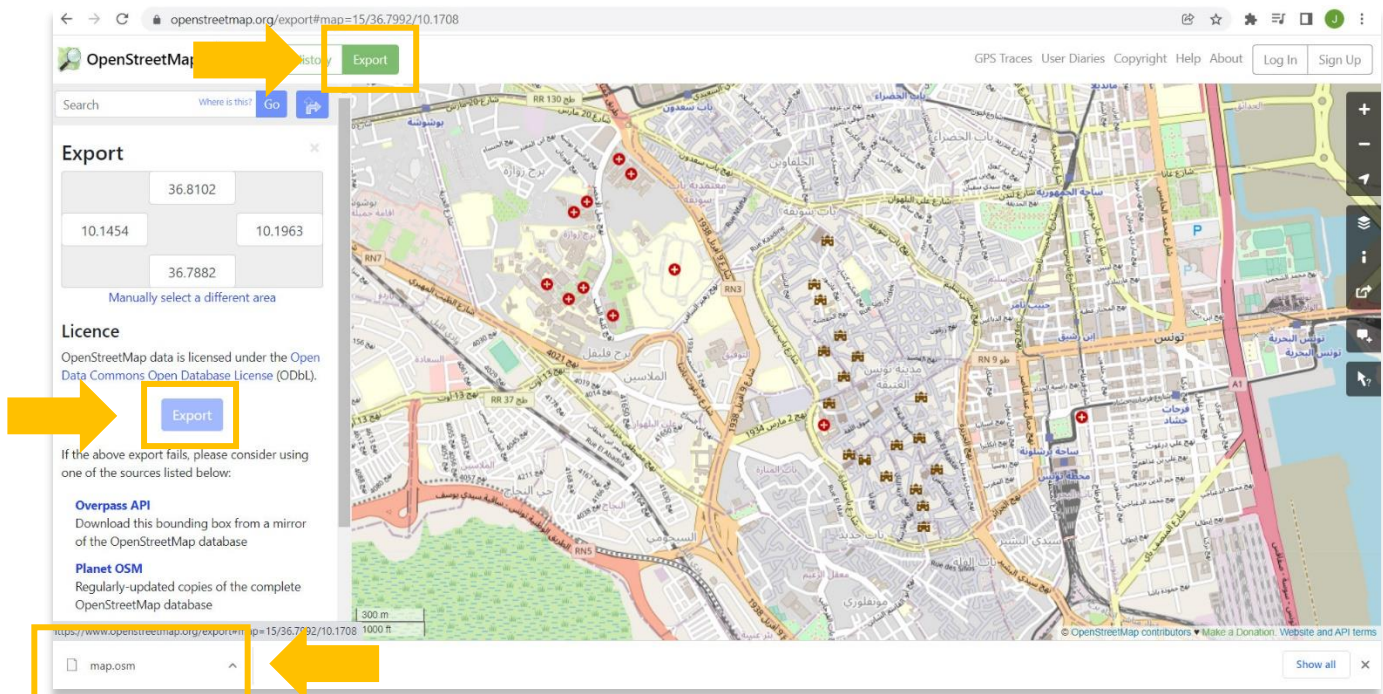




- OpenStreetMap allows you to export maps and data to your local computer. To export this information, you should first navigate to the specific view that you would like information for. In this example we are looking at the Medina of Tunis.



- Once you have aligned the map how you want it, then select **Export**. Your data will export as an .osm file. If the Export button is grey and you cannot select it, you will need to zoom in further because the dataset you are attempting to download is too large.



6. The final step is to create a folder on your local computer where the .osm file and other GIS data will be stored. Please note this location for the future as this folder location will also be used for the remaining QGIS tutorials.

For more detailed information on anything within this tutorial, please visit QGIS Documentation:

<https://docs.qgis.org/3.16/en/docs/index.html>



VIEW ALL ASOR TUTORIALS FOR FREE

asor.org/chi/chi-tutorials