



# LIBRECAD

Importing an Image into LibreCAD (03.08)

Aida Ejroushi

William Reynolds

Jared Koller

## ABOUT LIBRECAD

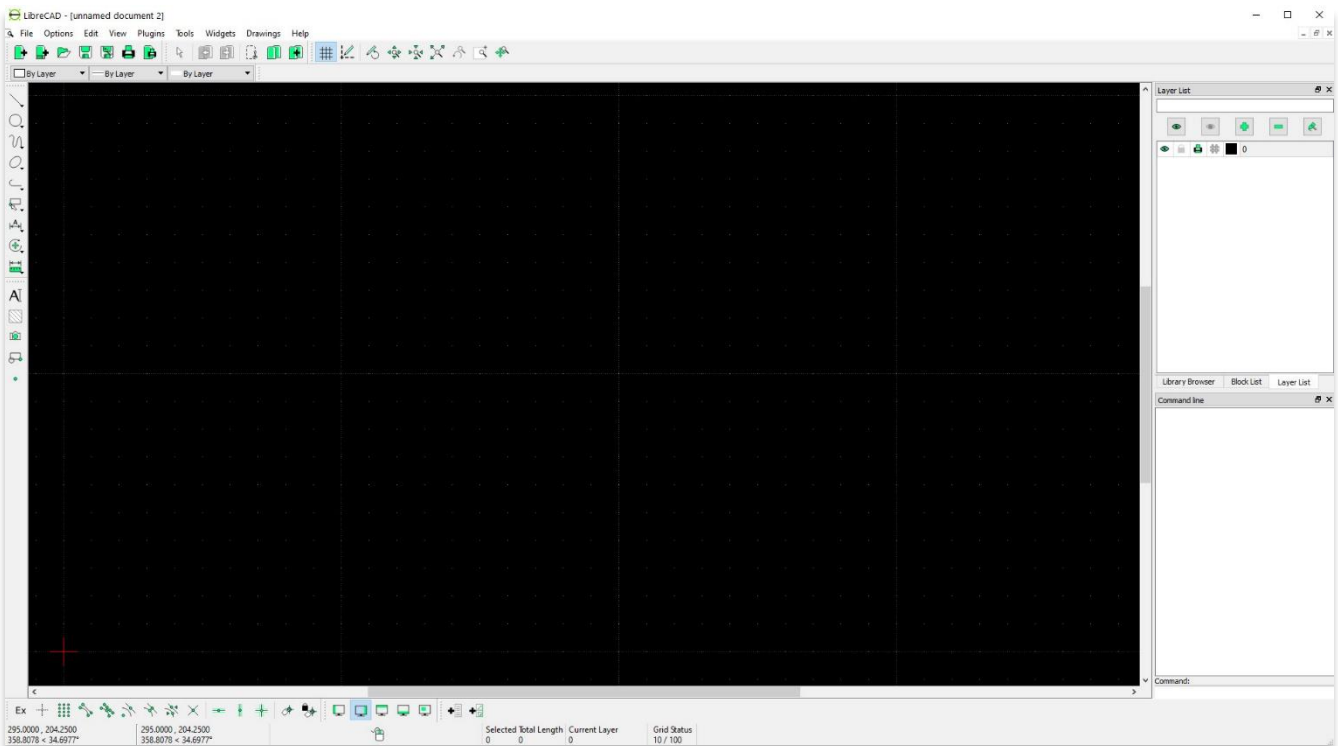
[LibreCAD](#) is a free Open Source computer-aided design (CAD) application for 2D design. LibreCAD works for Windows, Apple and Linux operating systems. Most of the interface and concepts are analogous to AutoCAD, making it easier to use for users with experience of this type of commercial CAD application. [Support and documentation](#) are free from a large, dedicated community of users, contributors and developers.

This **ASOR Tutorial (03.08)** will cover how to import an image into LibreCAD. This tutorial focuses on workflows common in heritage preservation projects and is not fully comprehensive on LibreCAD's abilities in other professions and fields of study.

For more detailed documentation about LibreCAD, please consult the software's User Manual: <https://librecad.readthedocs.io/en/latest/>.

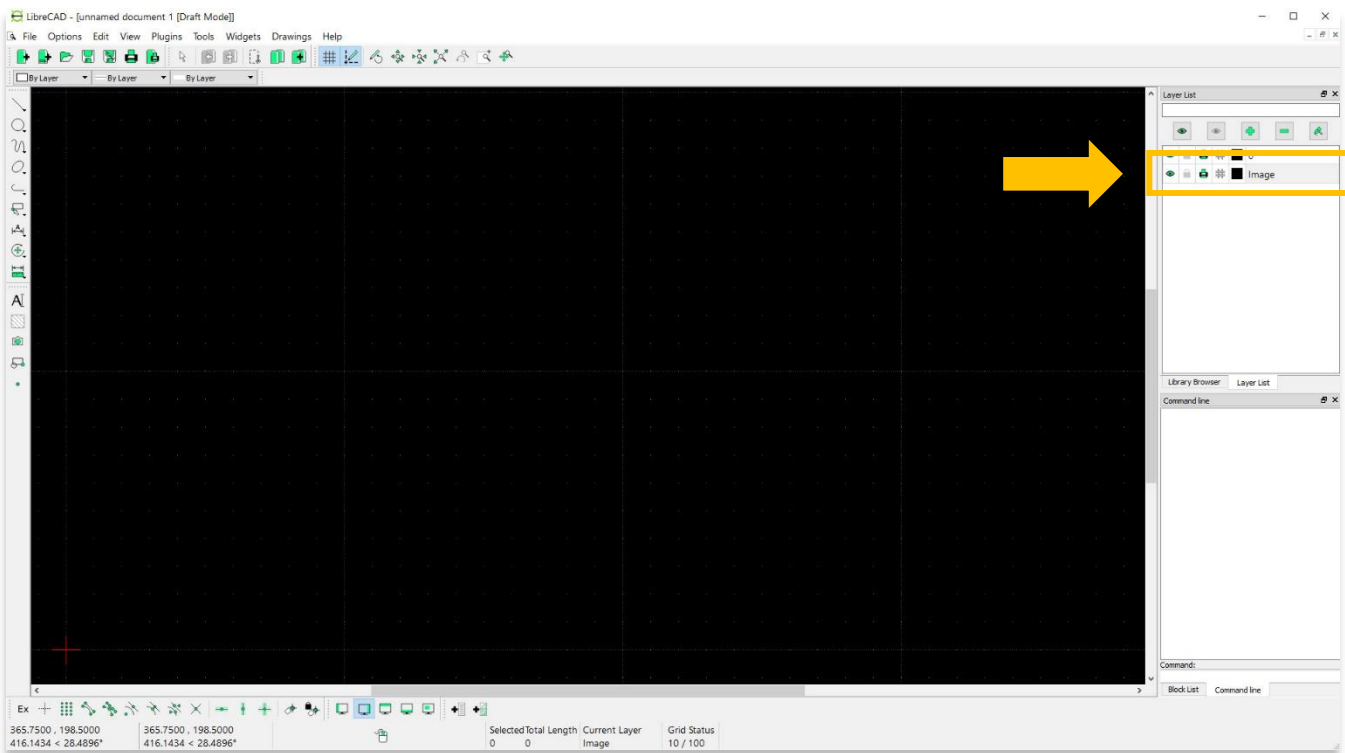
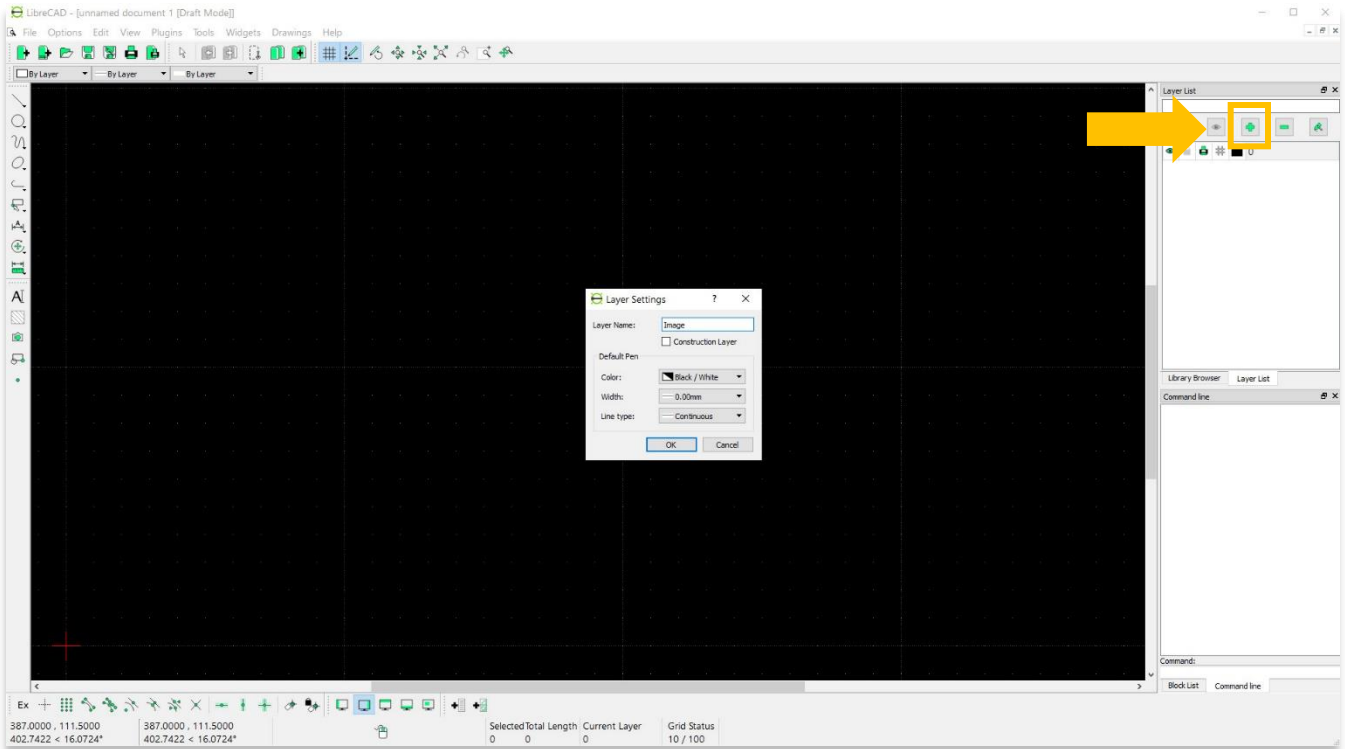
## OPENING LIBRECAD

1. To open LibreCAD, search for the program by typing in "LibreCAD" in your computer-wide search function (bottom left corner of your screen). Click on the LibreCAD application in your programs window to open.

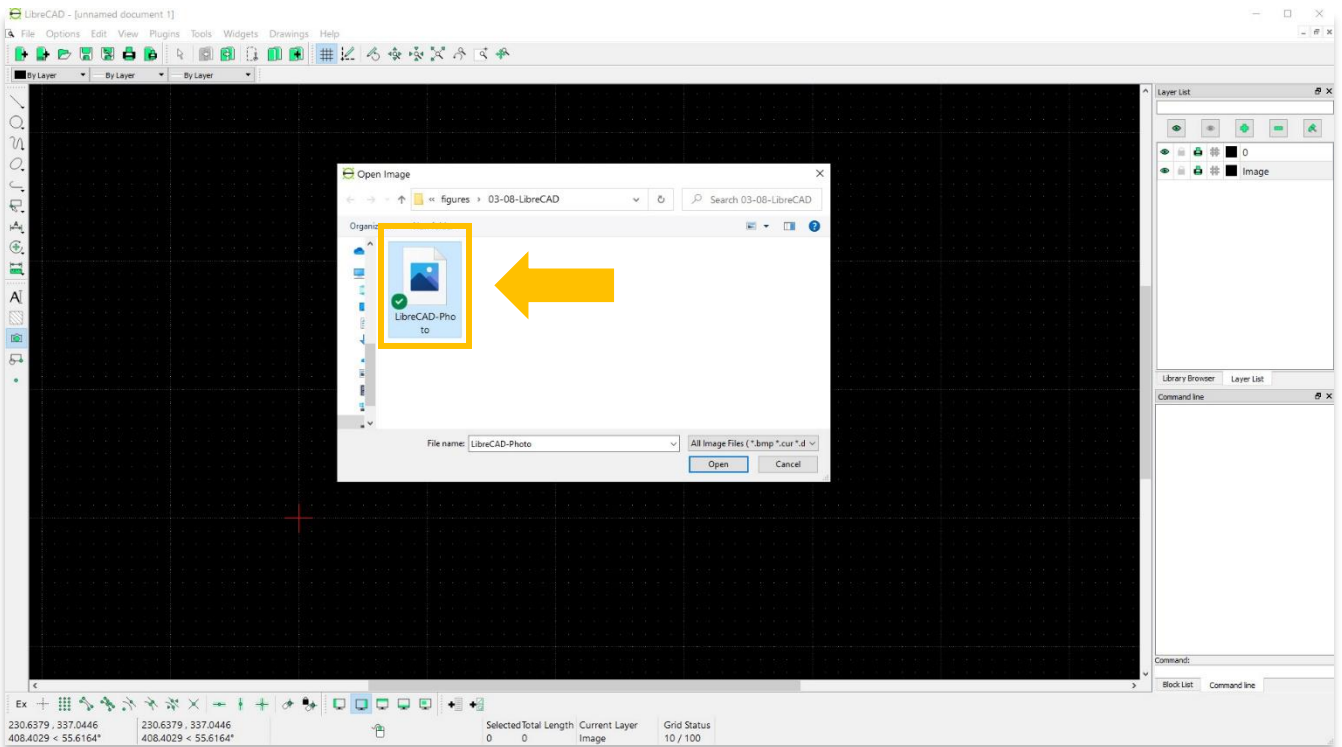
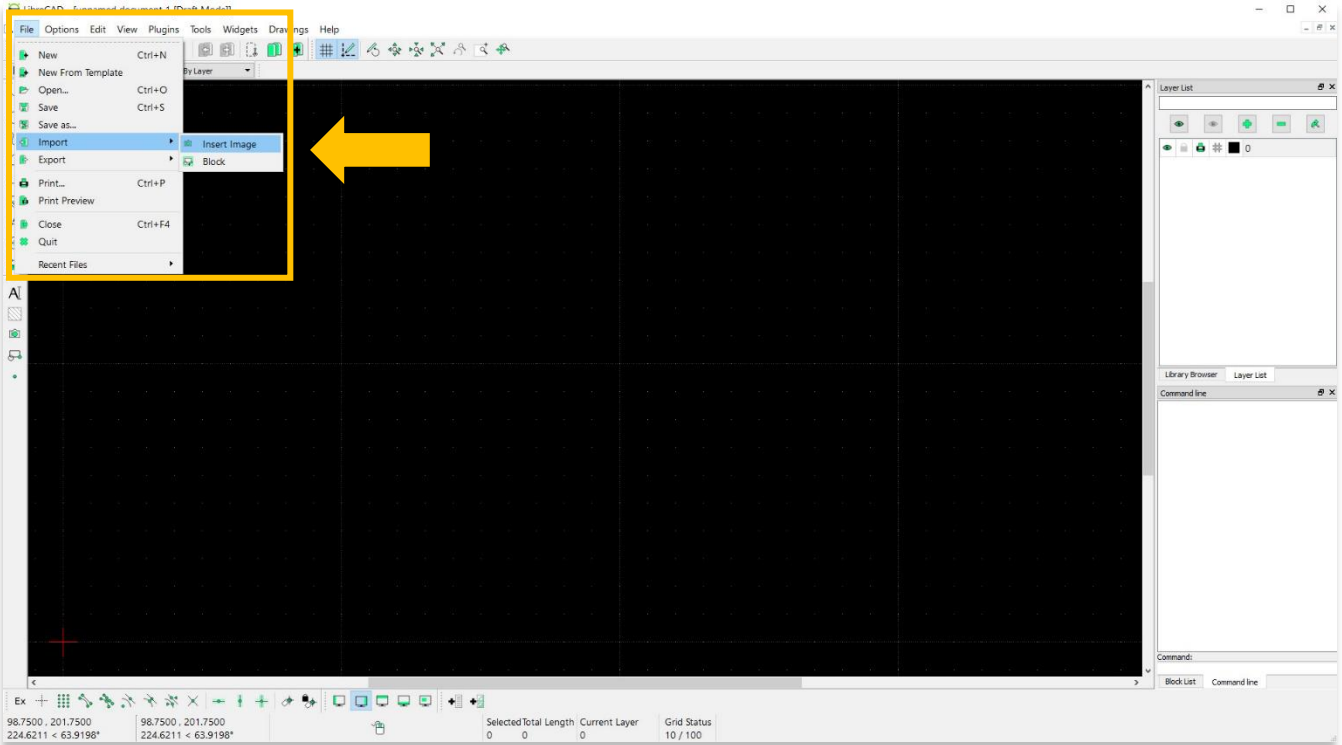


## IMPORTING IMAGE INTO LIBRECAD

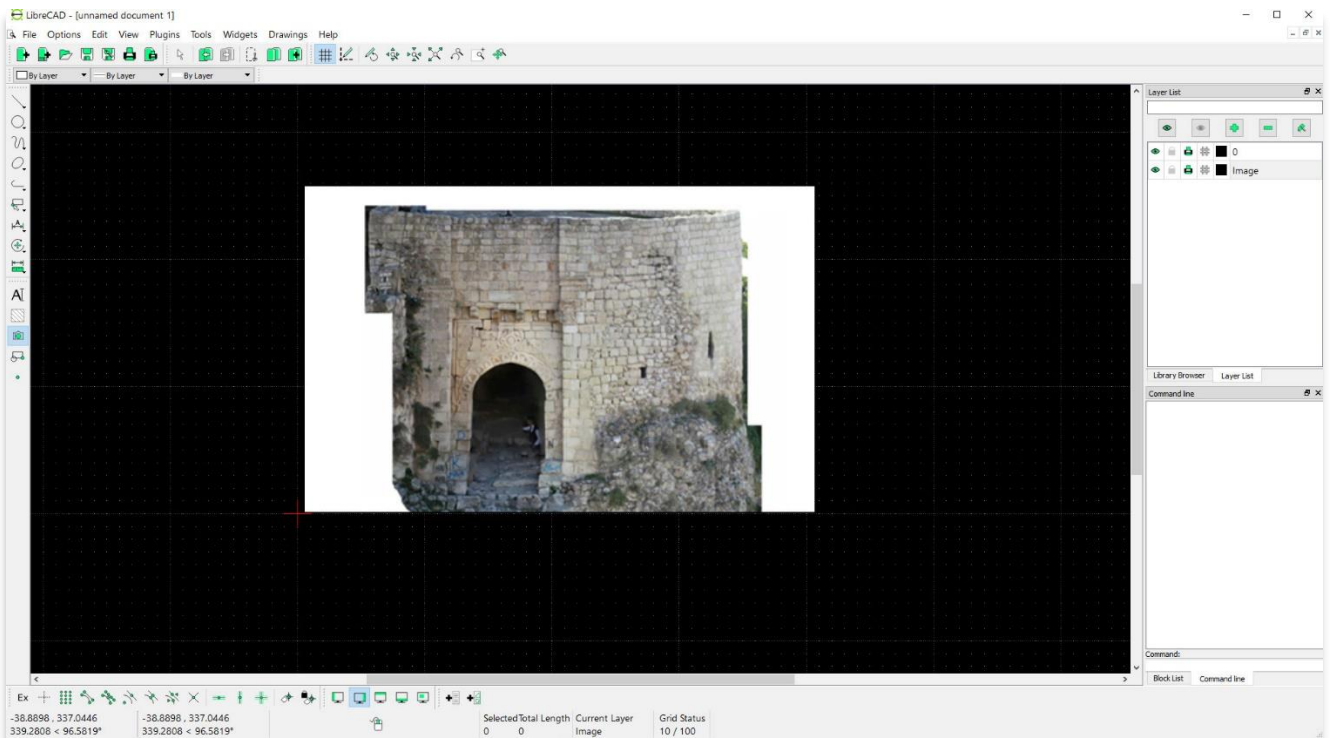
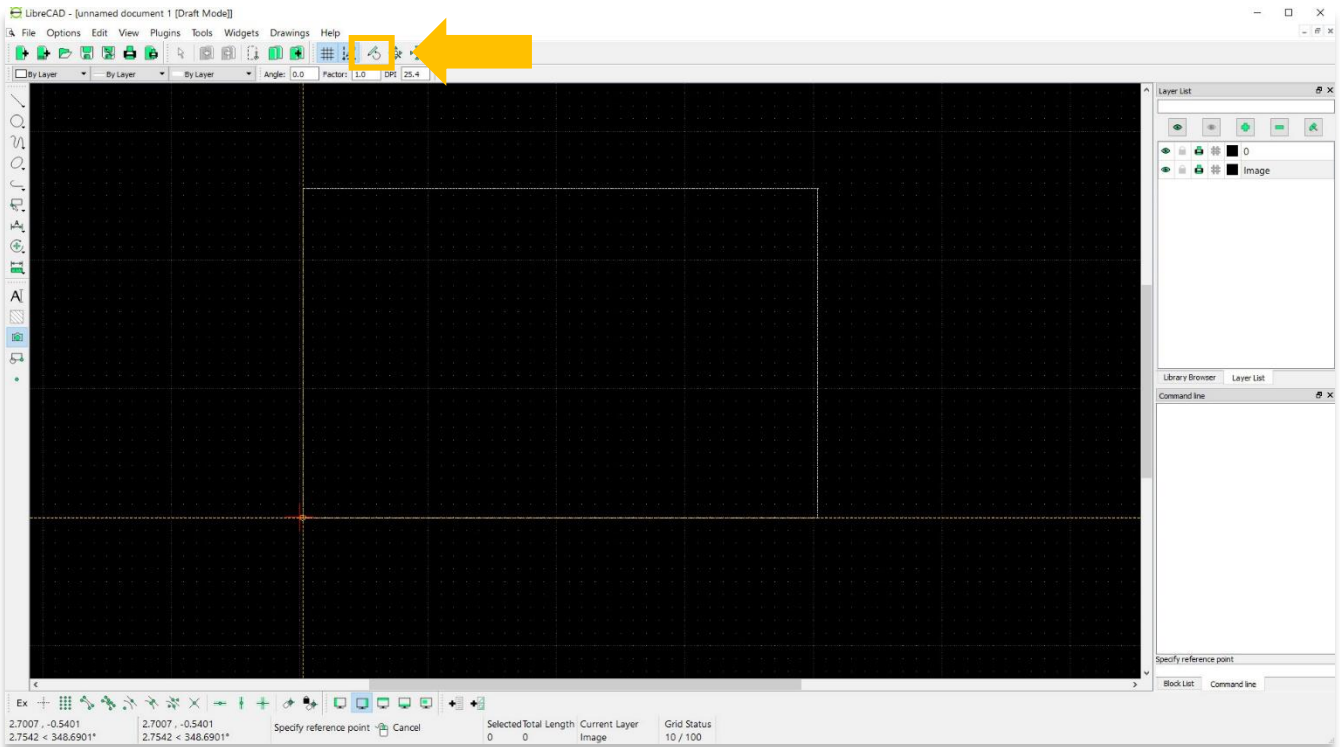
2. Before importing an image, create a new layer and label it with a name that will distinguish it from your drawing. Creating a separate layer will allow you to hide the image layer in the future when tracing. For more information on how to create a new layer, please refer to [ASOR Tutorial 03.05 \(Understanding Layers\)](#).



3. To import an image into LibreCAD, select **File > Import > Insert Image**. Then select the image from your computer or cloud storage that you wish to import.



4. A dotted rectangle will appear in the Main Drawing Area that moves with your cursor. Move the rectangle to the location that you wish to place the image. Then click your mouse to set the image in place.
- \* Please note—You may need to close the **Draft** button (highlighted below) for the image to become visible.





**VIEW ALL ASOR TUTORIALS FOR FREE**

[asor.org/chi/chi-tutorials](https://www.asor.org/chi/chi-tutorials)