



# LIBRECAD

Assigning Scale and Adjusting Paper Size (03.07)

Aida Ejroushi

William Reynolds

Jared Koller

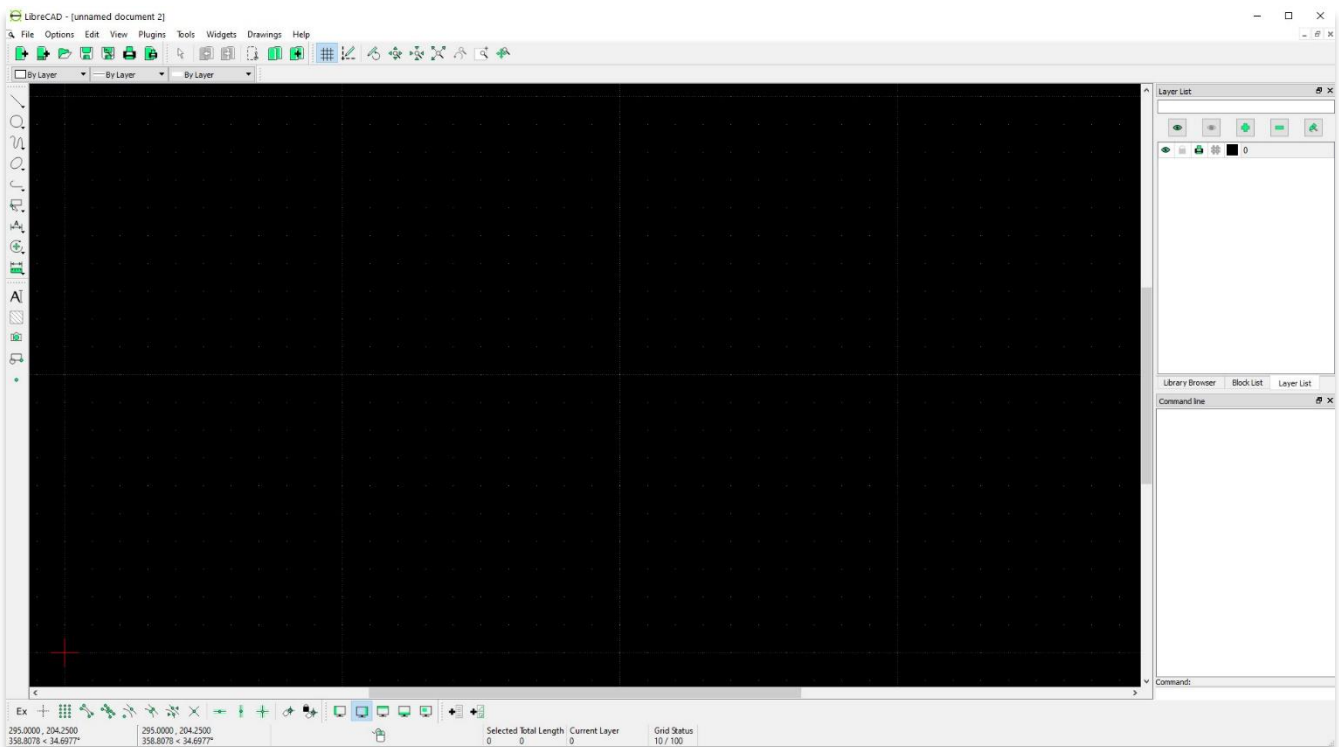
## ABOUT LIBRECAD

[LibreCAD](#) is a free Open Source computer-aided design (CAD) application for 2D design. LibreCAD works for Windows, Apple and Linux operating systems. Most of the interface and concepts are analogous to AutoCAD, making it easier to use for users with experience of this type of commercial CAD application. [Support and documentation](#) are free from a large, dedicated community of users, contributors and developers.

This **ASOR Tutorial (03.07)** will cover how to assign scale and adjust paper size in LibreCAD on a desktop computer or laptop.

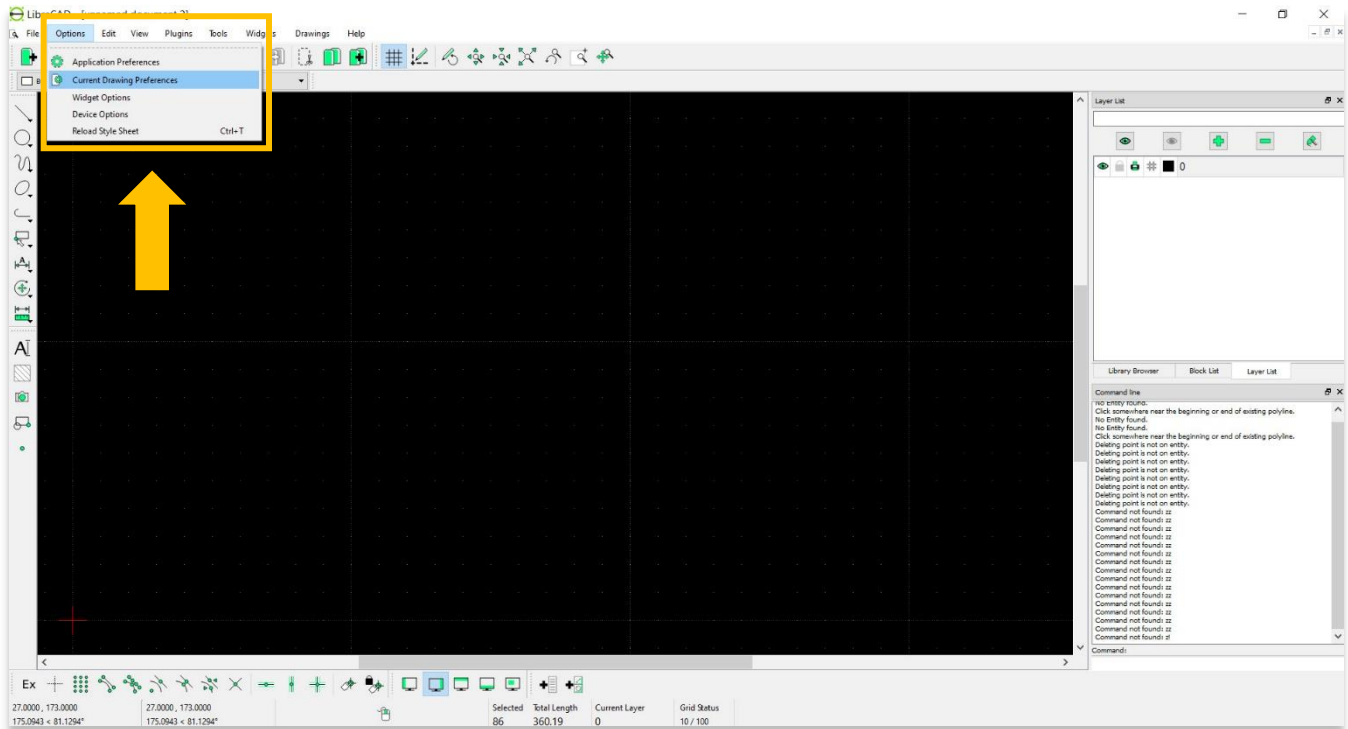
## OPENING LIBRECAD

1. To open LibreCAD, search for the program by typing in “LibreCAD” in your computer-wide search function (bottom left corner of your screen). Click on the LibreCAD application in your programs window to open.

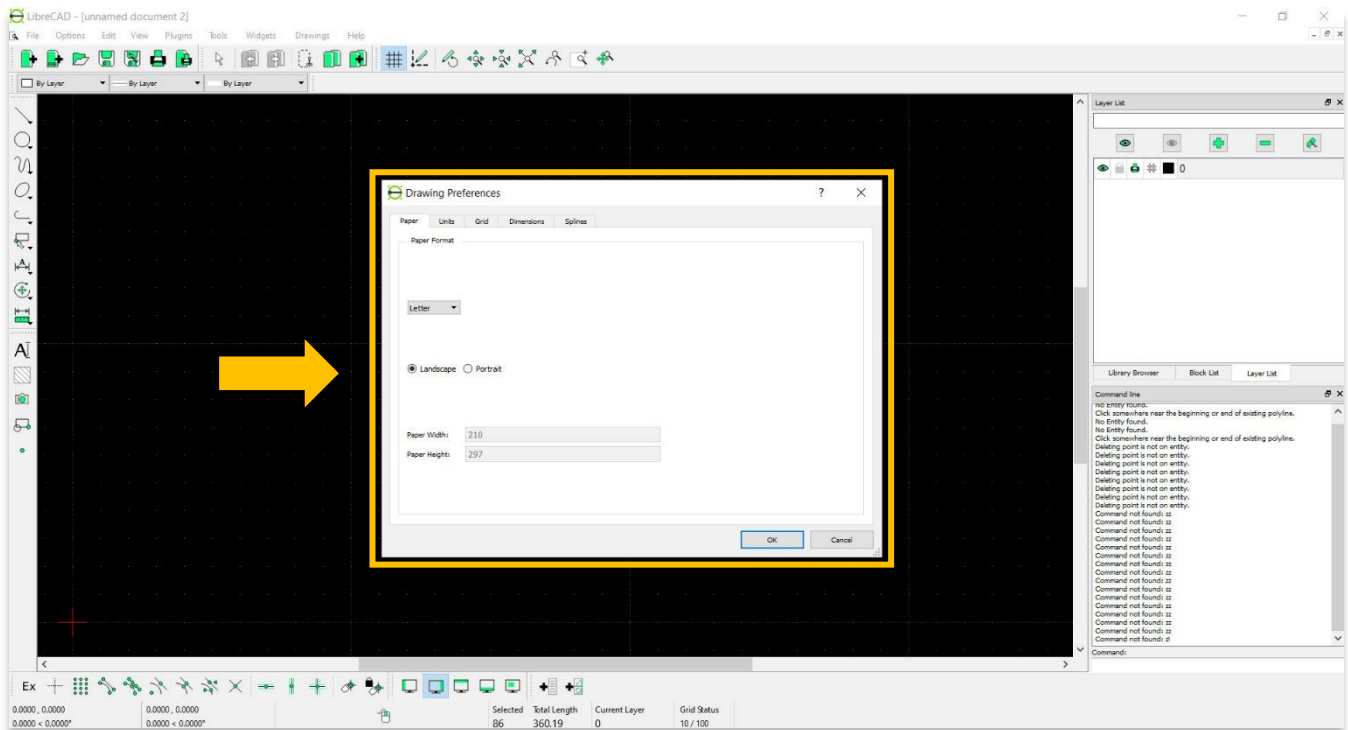


## ASSIGNING SCALE & ADJUSTING PAPER SIZE

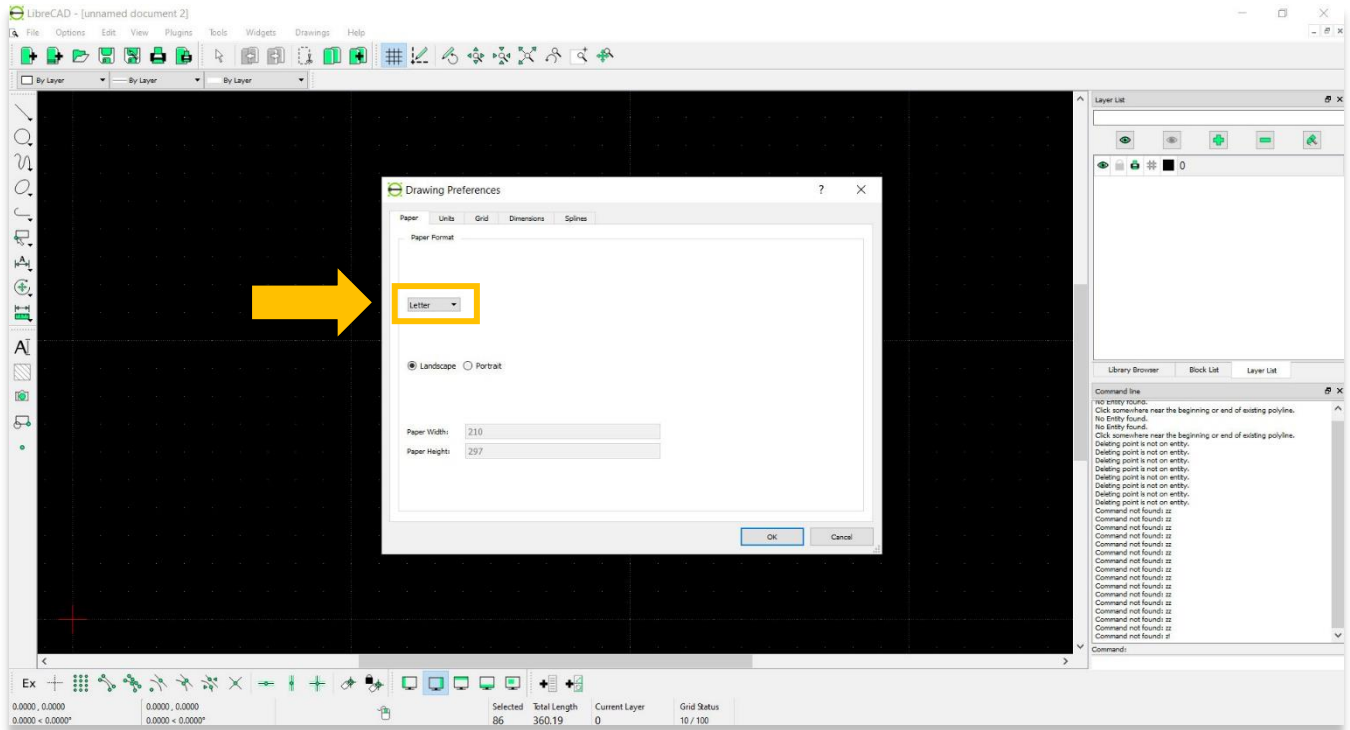
- To adjust your drawing area, scale, and paper size, click the **Options** command, then select **Current Drawing Preference**.



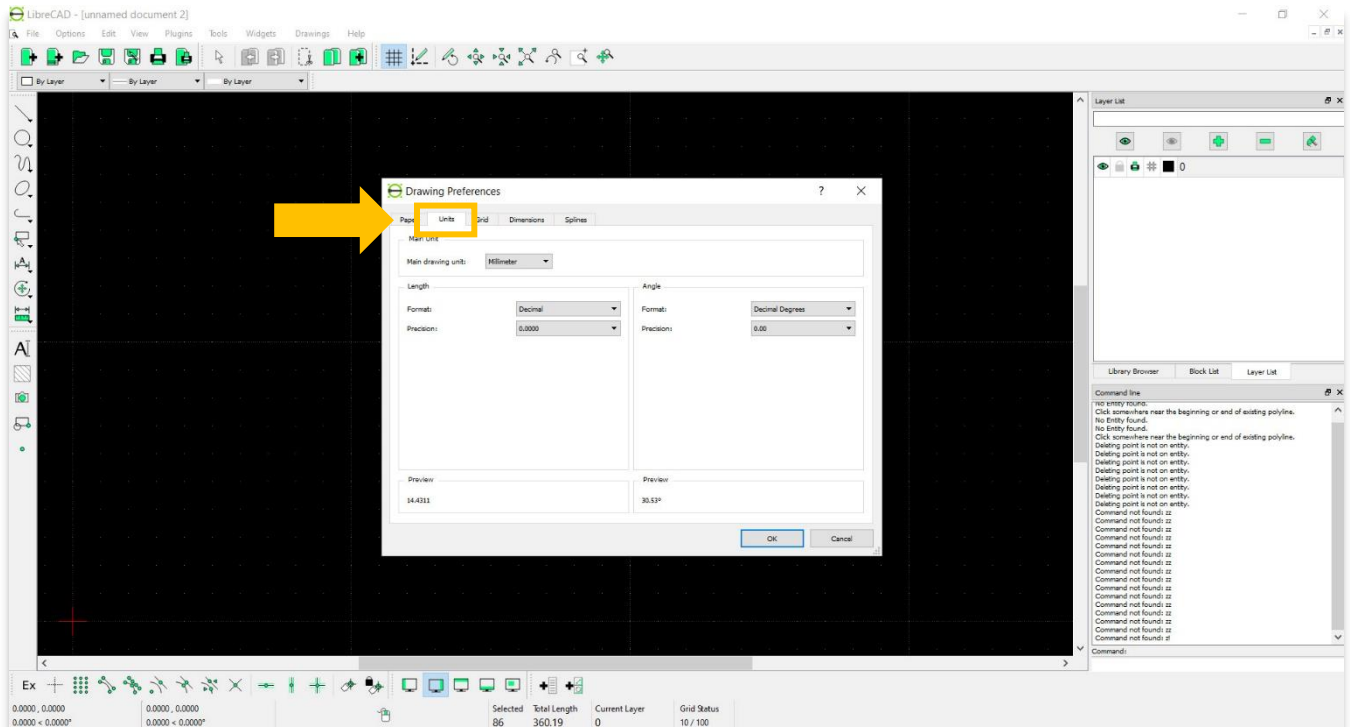
- A pop-up will open displaying options for selecting paper type, units, grid, dimension, and splines.



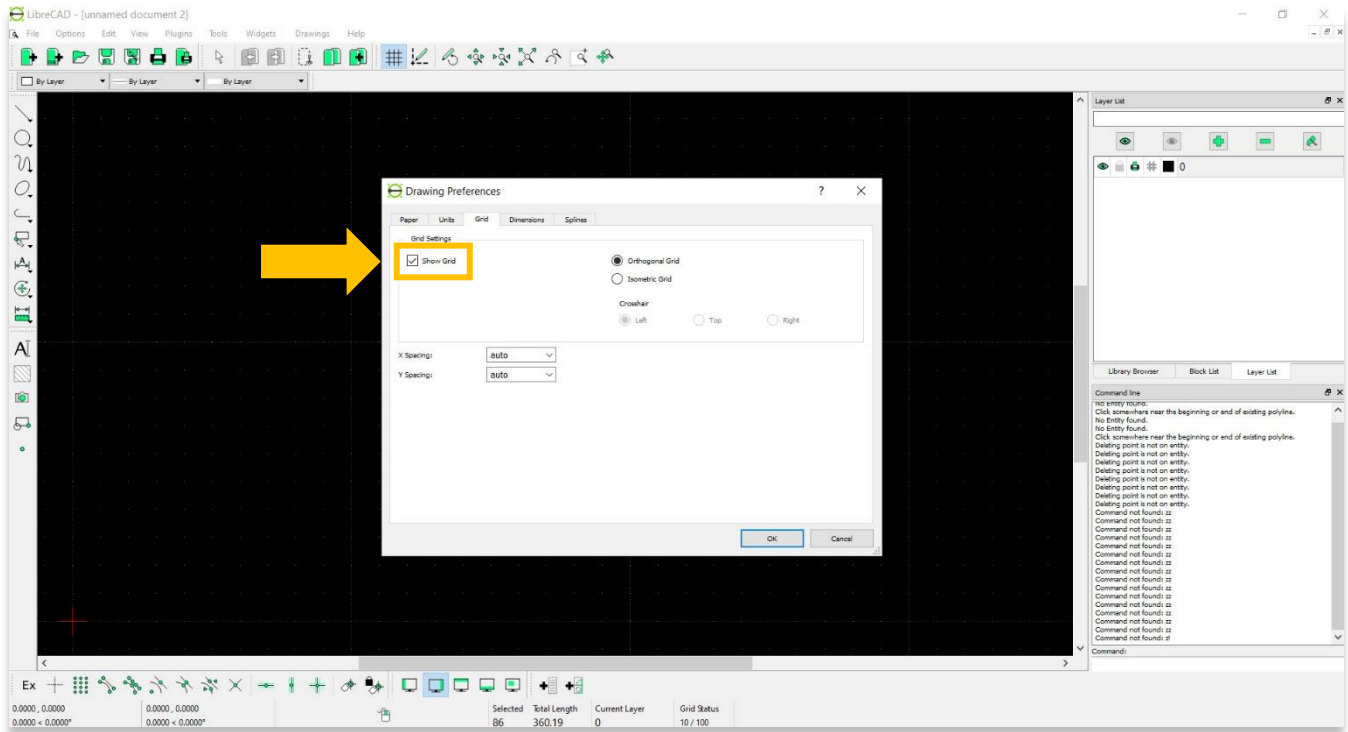
4. Within the **Paper** tab, select the type of the paper you would like to use. The list includes a lot of options for paper size. Next select the **Orientation** (landscape or portrait) of the paper.
- \* Please note— it is recommended for this tutorial to use **Letter paper type** as shown in the screenshot below.



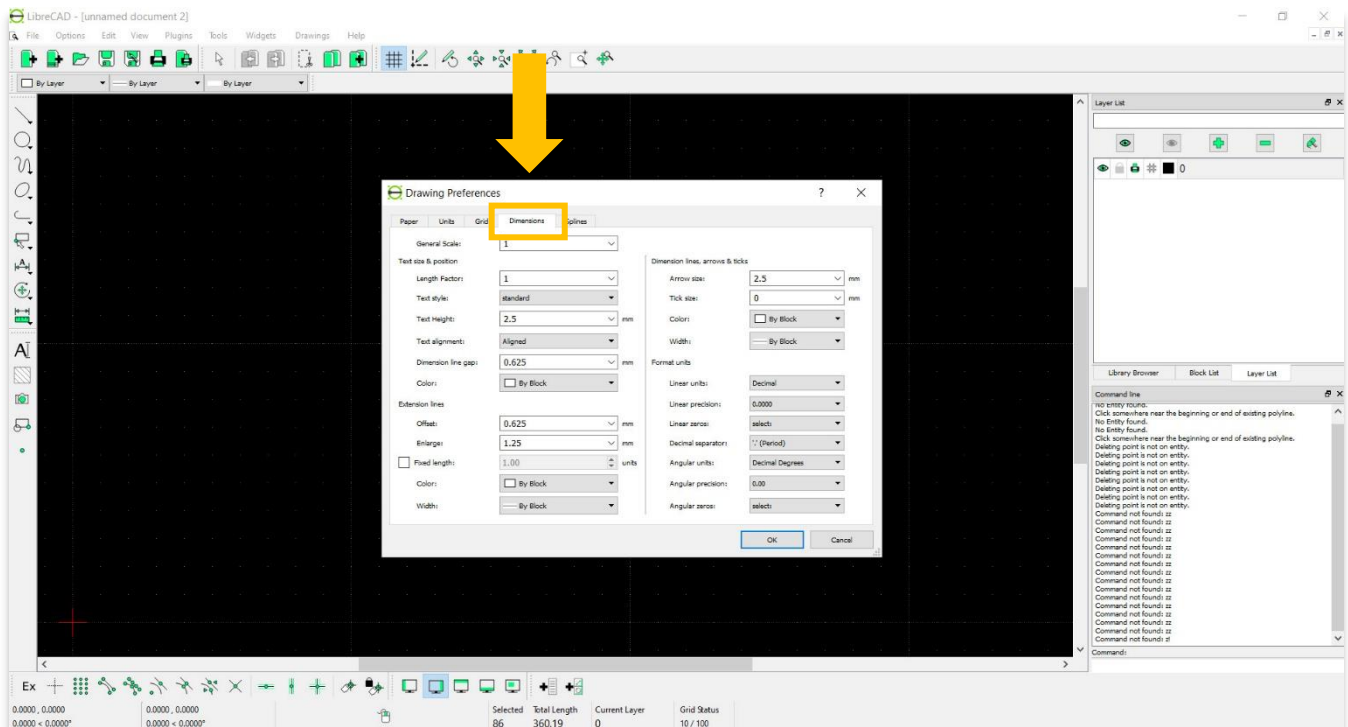
5. Within the **Units** tab, you can adjust the type of unit you wish to use (meters, millimeters..etc.). Set the **Precision** to 0.00. No other adjustments are needed for the upcoming tutorial about tracing images ([ASOR Tutorial 03.09—Tracing Images](#)).



6. You may wish to display a grid in the background of your drawing. To turn this on, check the **Show Grid** box under the **Grid** tab.



7. The **Dimensions** tab allows you to adjust the appearance of the dimension measurement graphics first introduced in [ASOR Tutorial 03.06 \(Overview of Drawing Tools\)](#). After completing any drawing in LibreCAD, you are encouraged to try different settings and designs to find the best appearance for your measurement graphics.





**VIEW ALL ASOR TUTORIALS FOR FREE**

[asor.org/chi/chi-tutorials](https://www.asor.org/chi/chi-tutorials)