



LIBRECAD

Getting Started—Using the Main Drawing Area

(03.03)

Aida Ejroushi

William Reynolds

Jared Koller

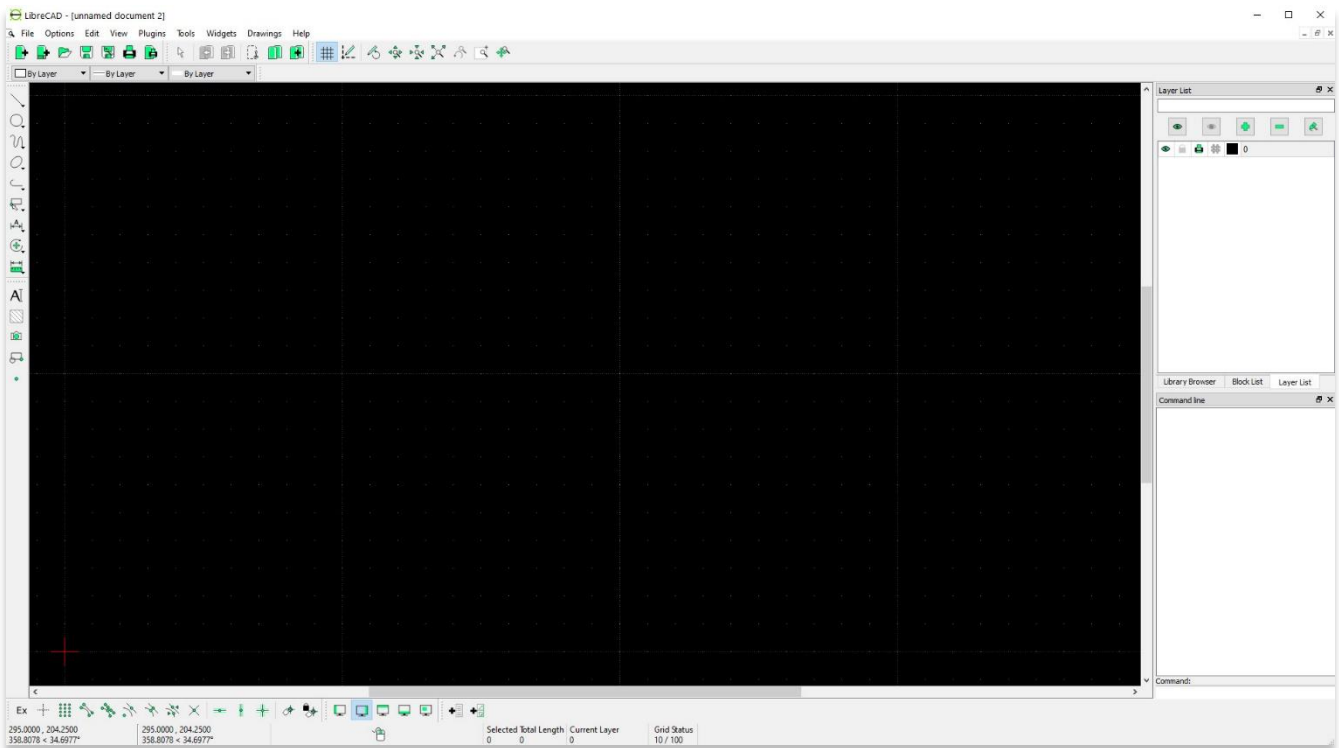
ABOUT LIBRECAD

[LibreCAD](#) is a free Open Source computer-aided design (CAD) application for 2D design. LibreCAD works for Windows, Apple and Linux operating systems. Most of the interface and concepts are analogous to AutoCAD, making it easier to use for users with experience of this type of commercial CAD application. [Support and documentation](#) are free from a large, dedicated community of users, contributors and developers.

This **ASOR Tutorial (03.03)** will cover how to get started with LibreCAD using the Main Drawing Area. This tutorial focuses on workflows common in heritage preservation projects and is not fully comprehensive on LibreCAD's abilities in other professions and fields of study.

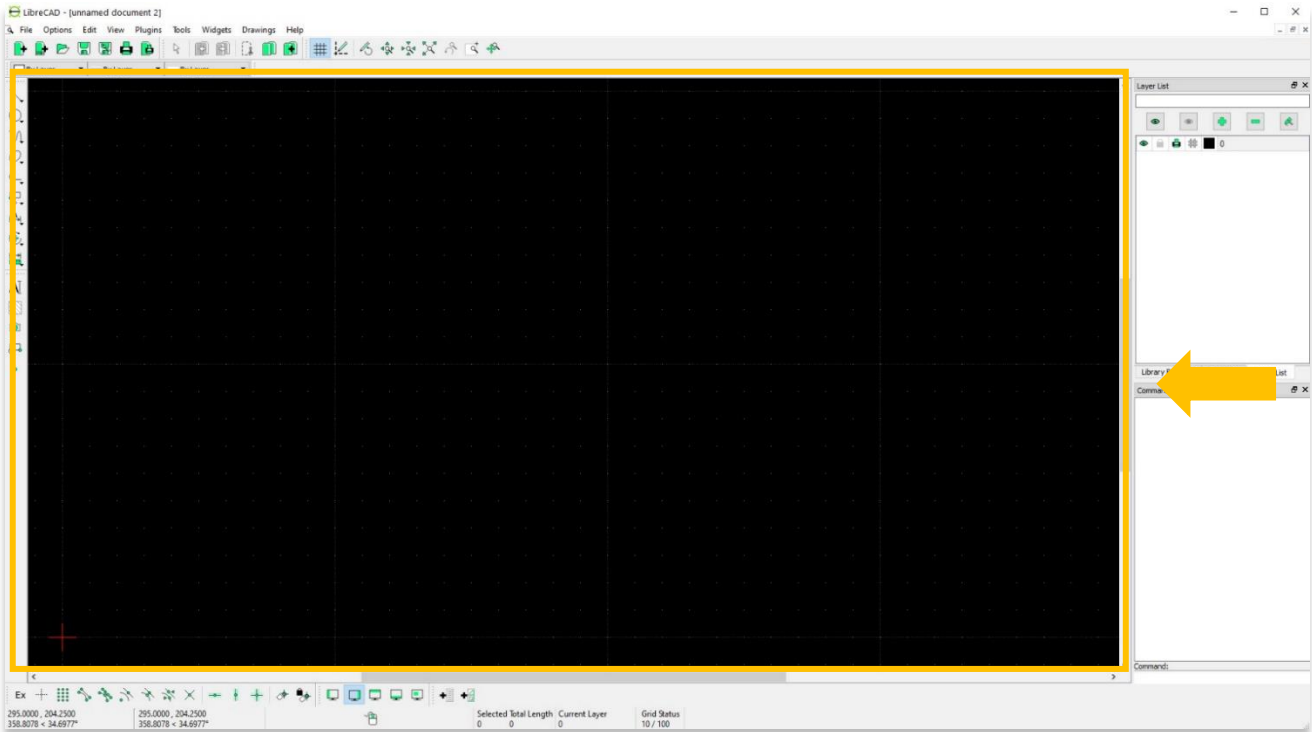
OPENING LIBRECAD

1. To open LibreCAD, search for the program by typing in "LibreCAD" in your computer-wide search function (bottom left corner of your screen). Click on the LibreCAD application in your programs window to open.

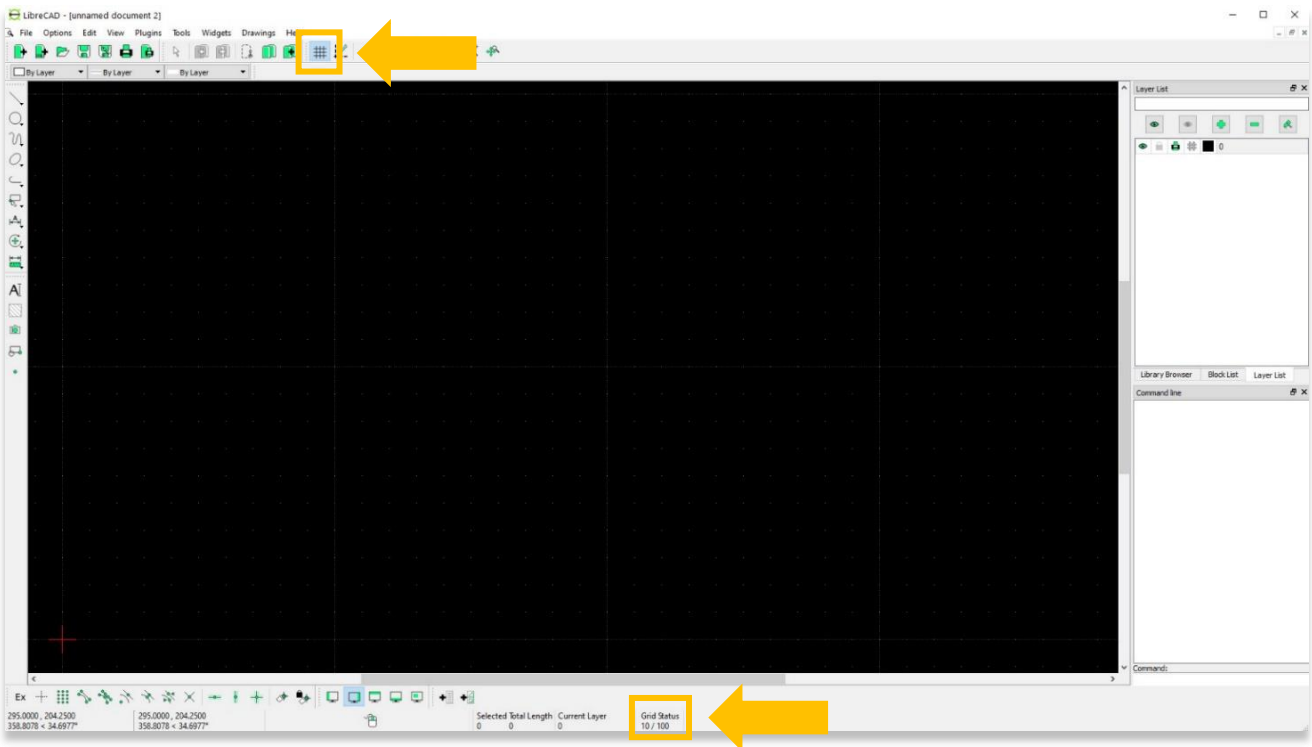


MAIN DRAWING AREA

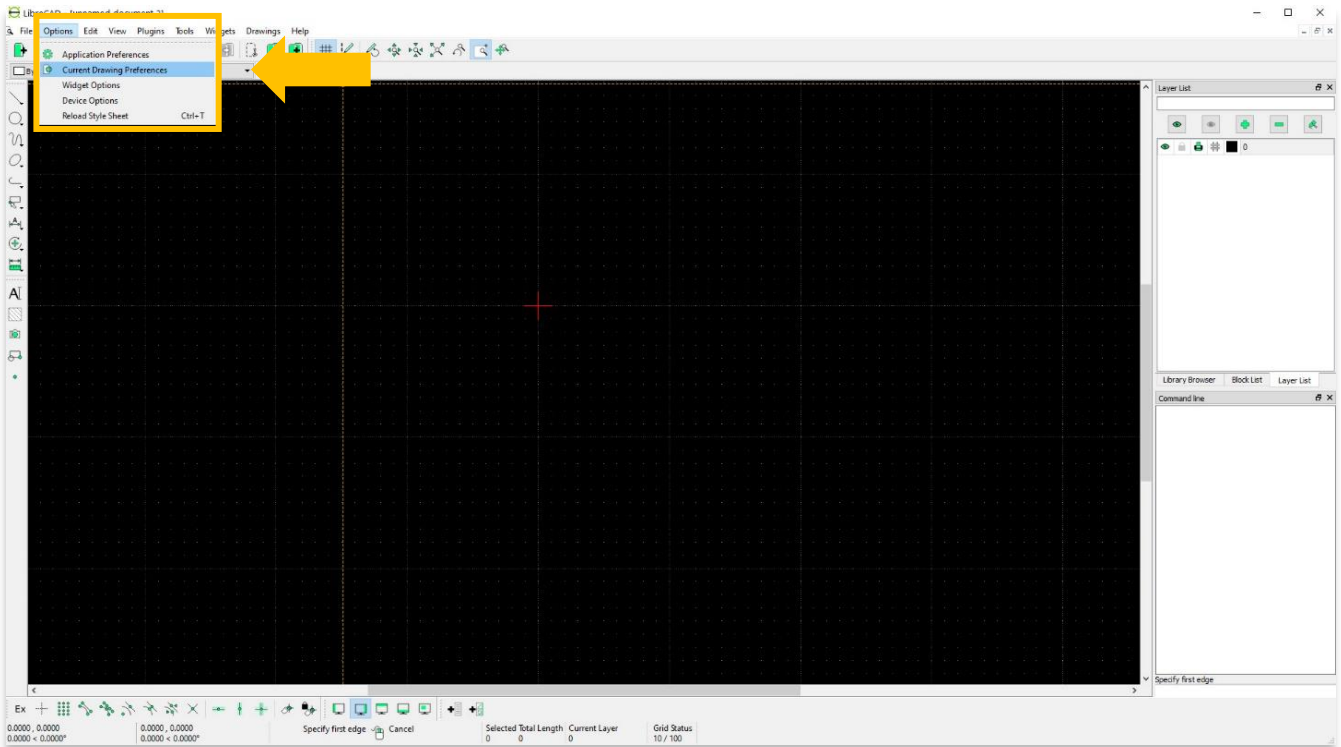
- Highlighted below is the **Main Drawing Area**



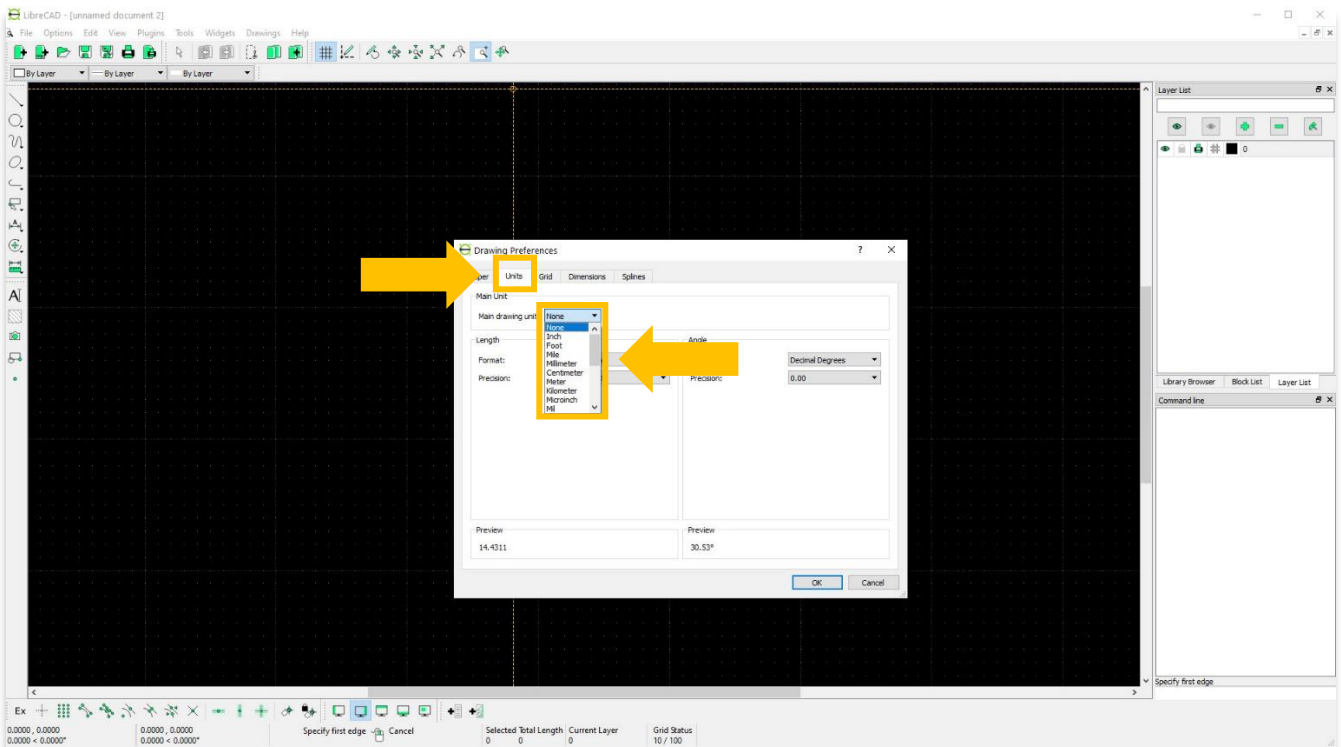
- Before beginning a new project, turn on the **Grid** and check your **Grid Status**. By default, your **Grid Status** will be set to **10/100**. This means that the distance between each dot is 10mm and between each line is 100mm.



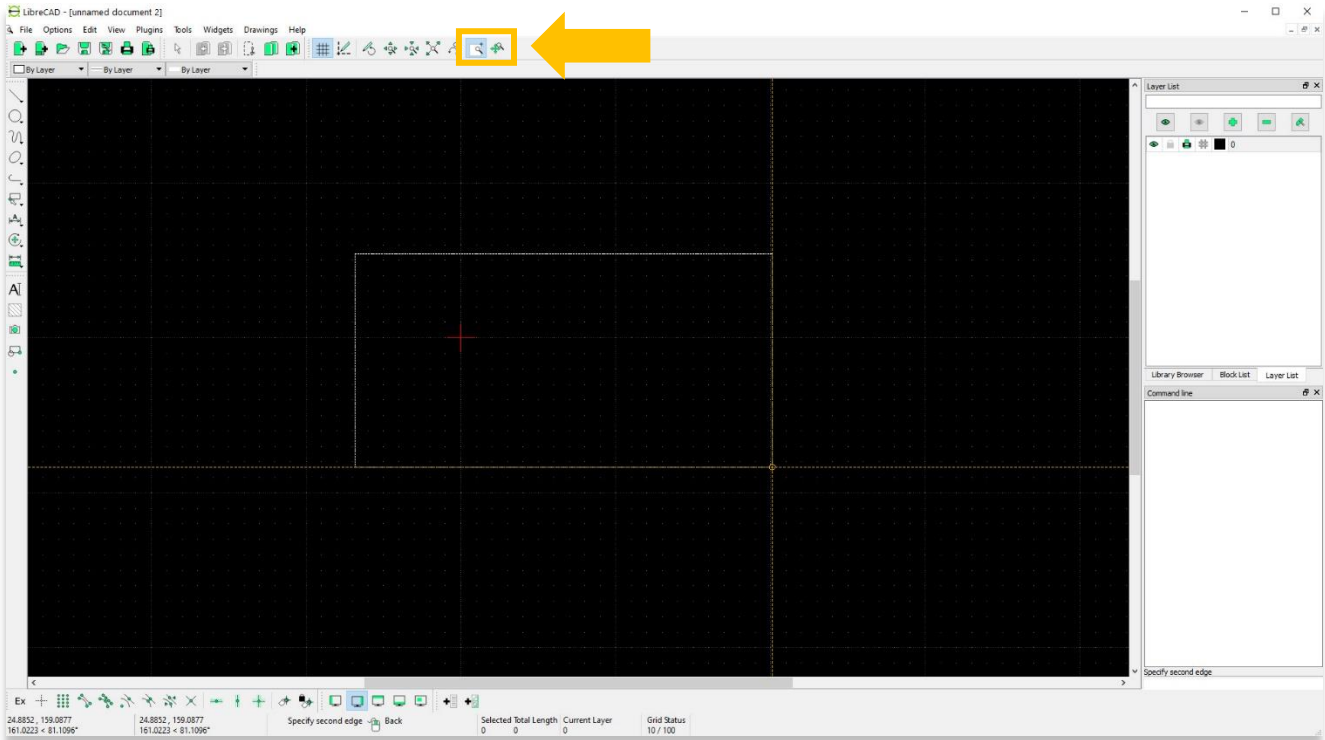
4. Unit measurements can be changed by selecting **Current Drawing Preferences** under the **Options** menu.



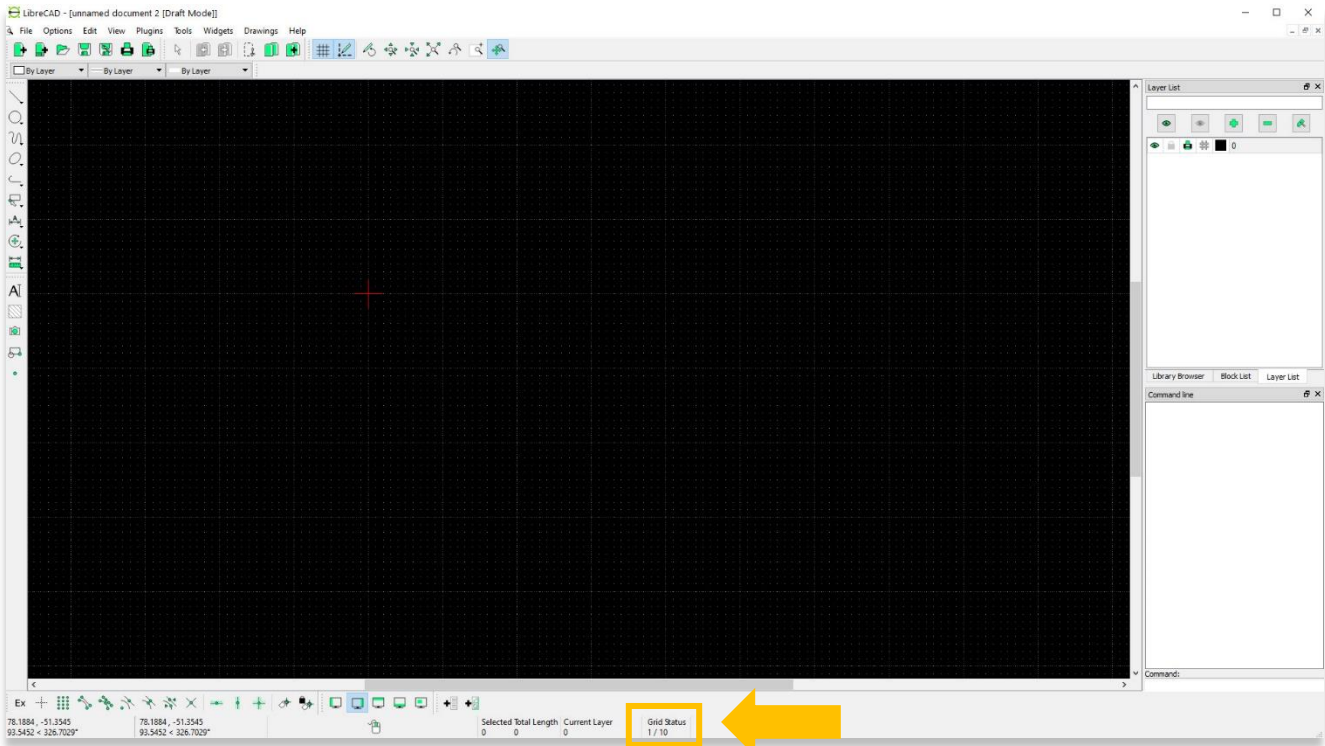
5. In the pop-up, select the **Units** tab. You can choose which unit type under the **Main Drawing Unit** drop-down menu. Then press **OK**.



6. To navigate around the **Main Drawing Area**, hold down on the mouse wheel and move your cursor. You can zoom in and out by rolling your mouse wheel by using the **Zoom icons** in the top menu bar.



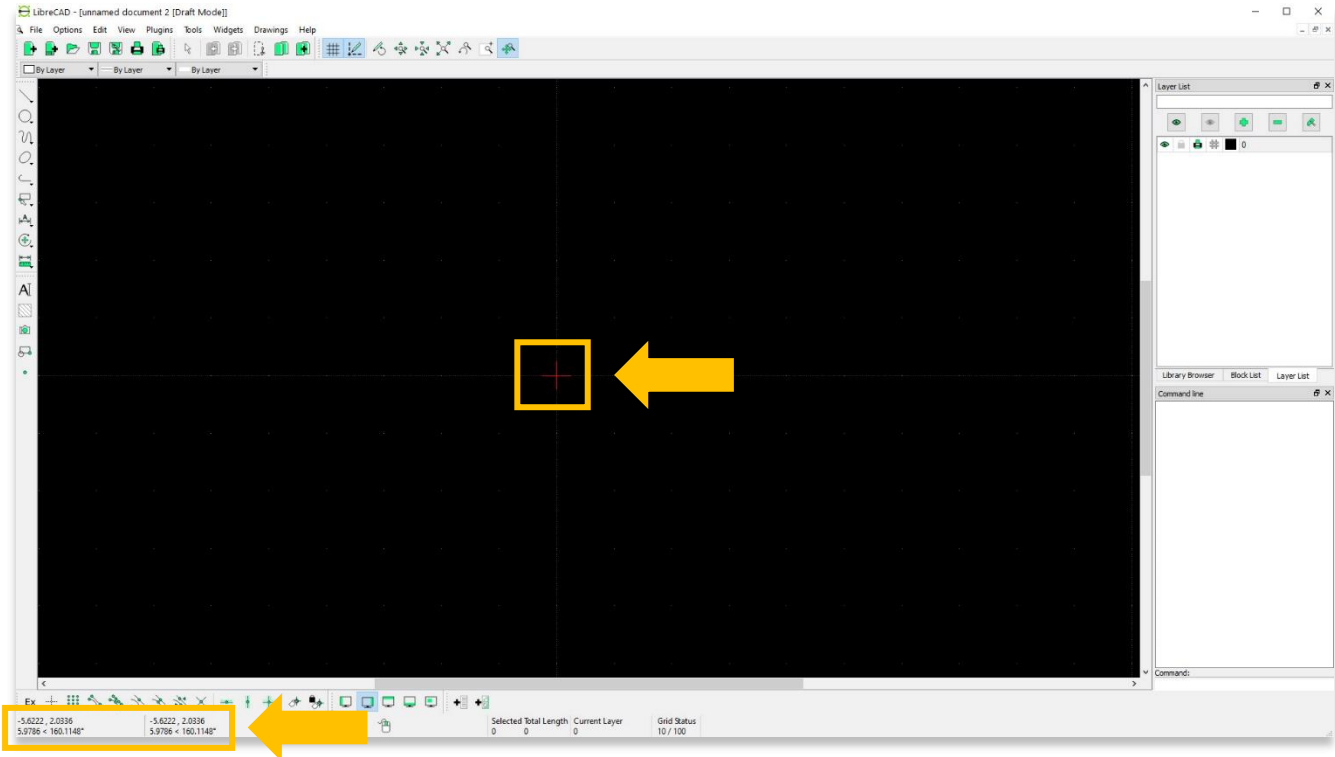
7. You will notice that the scale changes in Grid Status when you zoom in and out.



8. **Origin Point:** Everything drawn in LibreCAD is based on an X,Y coordinate system with an absolute origin or Zero point located at the red cross. Every feature that you draw is located in relation to this origin through X,Y coordinates.

X units are measured horizontally and all Y units are measured vertically. Coordinates can also be shown as Positive (+) or Negative (-) values.

When you hover over any point in the Drawing Area, you will notice the X,Y values change.



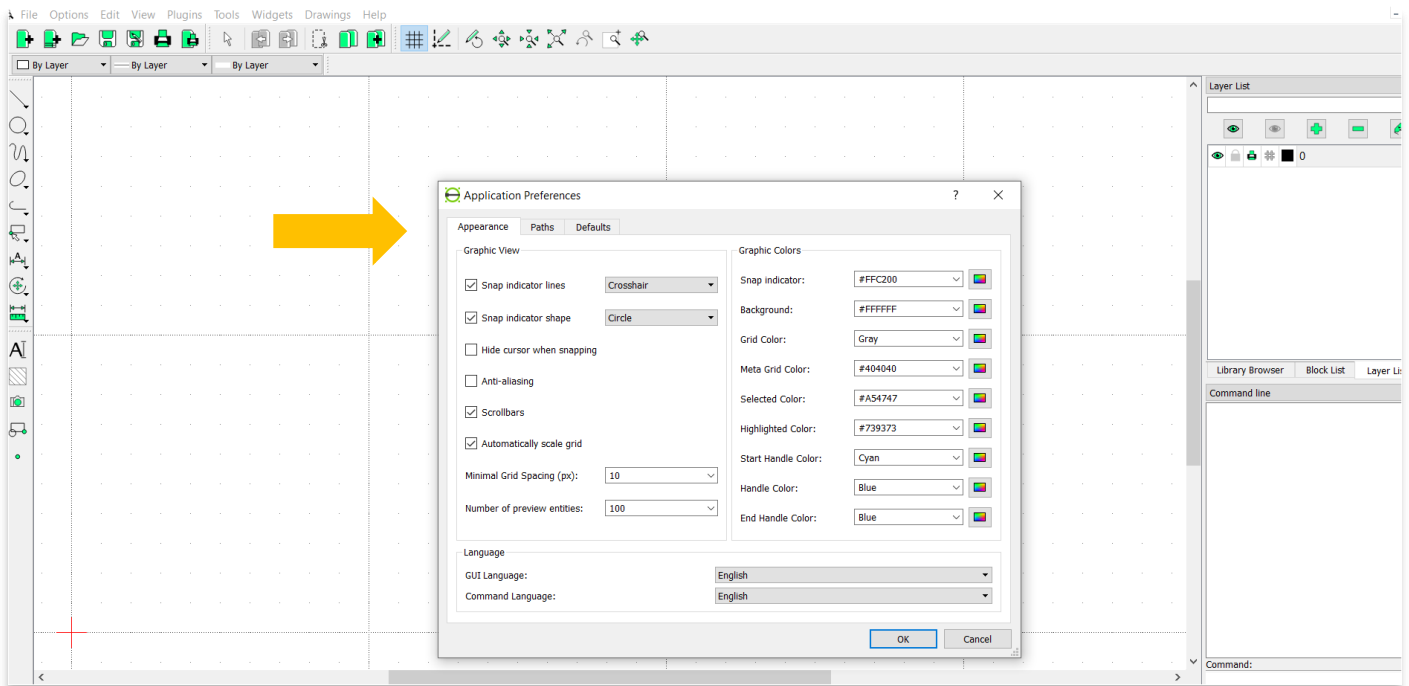
9. There are three options (White, Black, & Light Blue) to change the color of the main drawing area (Background).

To change the color, click **Options > Application Preferences**. Then, from **Graphic Colors**, select your preferred color from the drop list.

White background option is #FFFFFF

Black background is #000000

Light blue background is #F0F8FF



VIEW ALL ASOR TUTORIALS FOR FREE

asor.org/chi/chi-tutorials