



QGIS

Importing KoboToolbox Data to QGIS (02.08)

William Reynolds

Jared Koller

ABOUT QGIS

QGIS is a free and open source Geographic Information System (GIS), or geodatabase, licensed under the GNU General Public License. QGIS runs on Linux, Unix, Mac OSX, Windows and Android and supports numerous vector, raster, and database formats and functionalities. QGIS users can view, edit, and analyze spatial and locational information through its free software toolkit.

Download QGIS here: <https://qgis.org/>

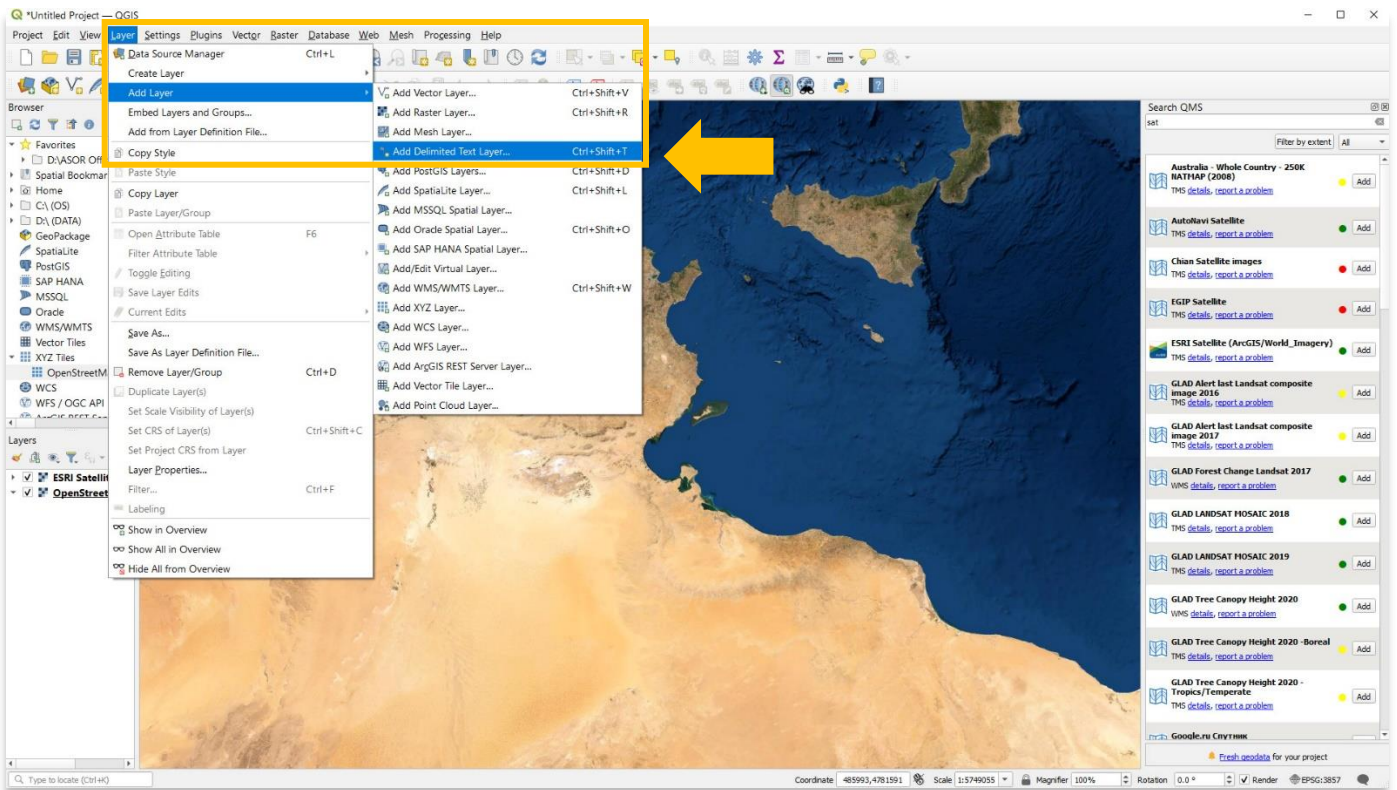
Documentation: <https://docs.qgis.org/3.16/en/docs/index.html>

This **ASOR Tutorial (02.08)** will cover how to import data from KoboToolbox into QGIS, using sample data collected by following workflows in ASOR tutorials about KoboToolbox and the KoboCollect app (01.01-08).

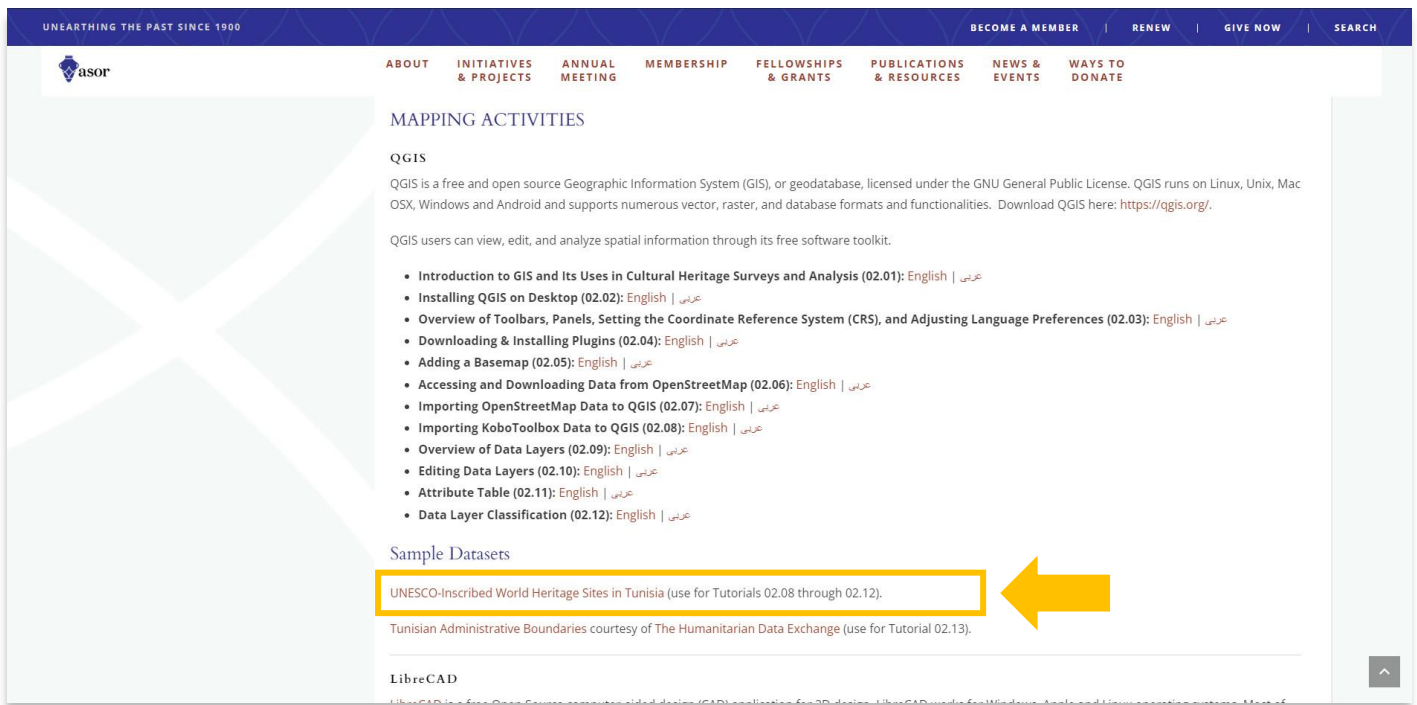
IMPORT DATA FROM KOBOTOOLBOX PROJECT

1. Locate the CSV file exported from your KoboToolbox project. See [ASOR Tutorial 01.08 \(Exporting Data from a KoboToolBox Project\)](#) for steps to export this data. In the top menu bar, select **Layer**. Then select **Add Layer > Add Delimited Text Layer**.

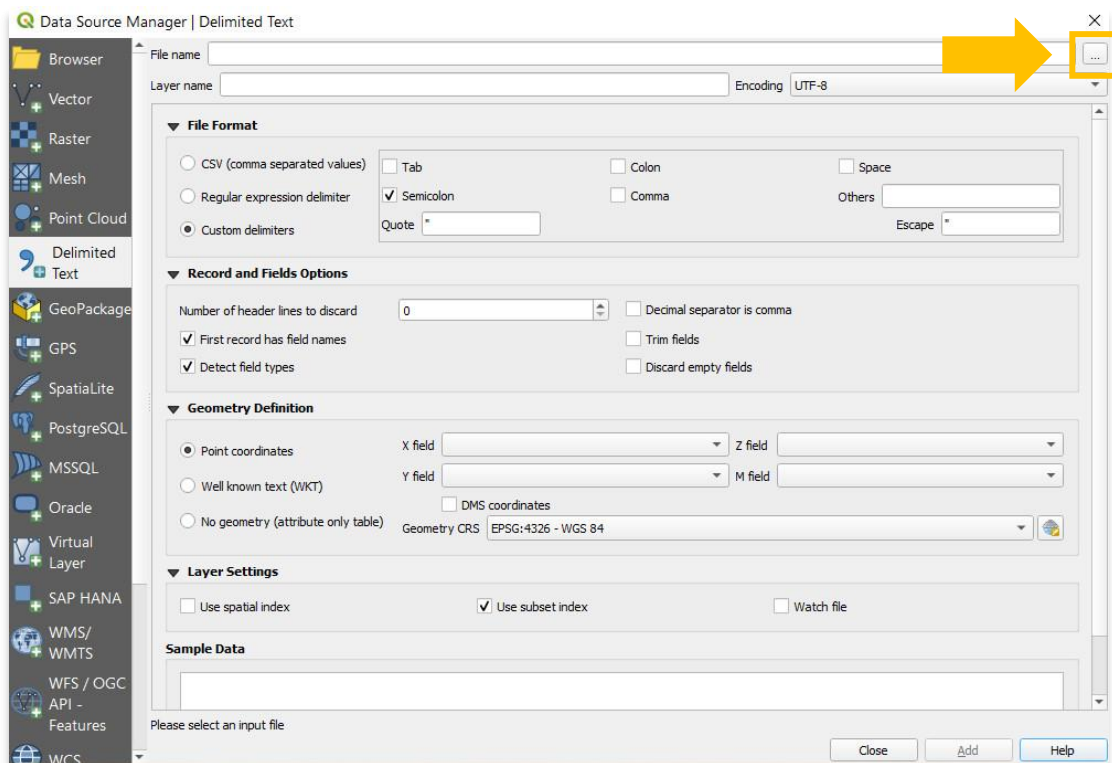
* Do not select **Create Layer**. CSV files will only upload through **Add Layer**.



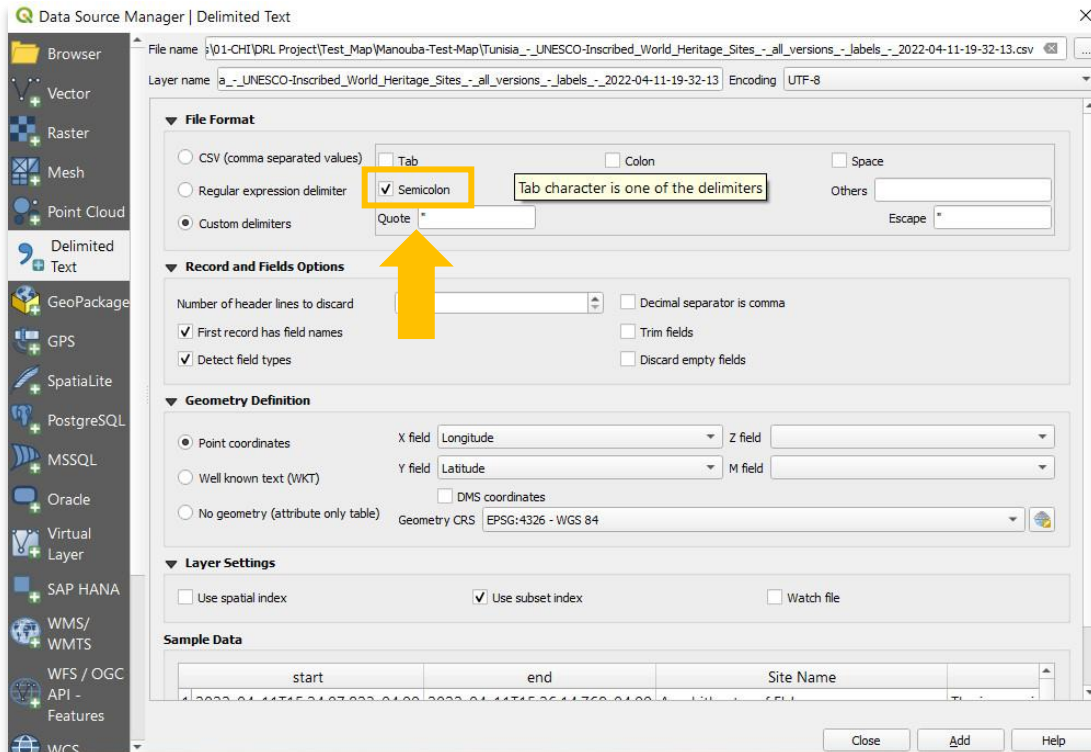
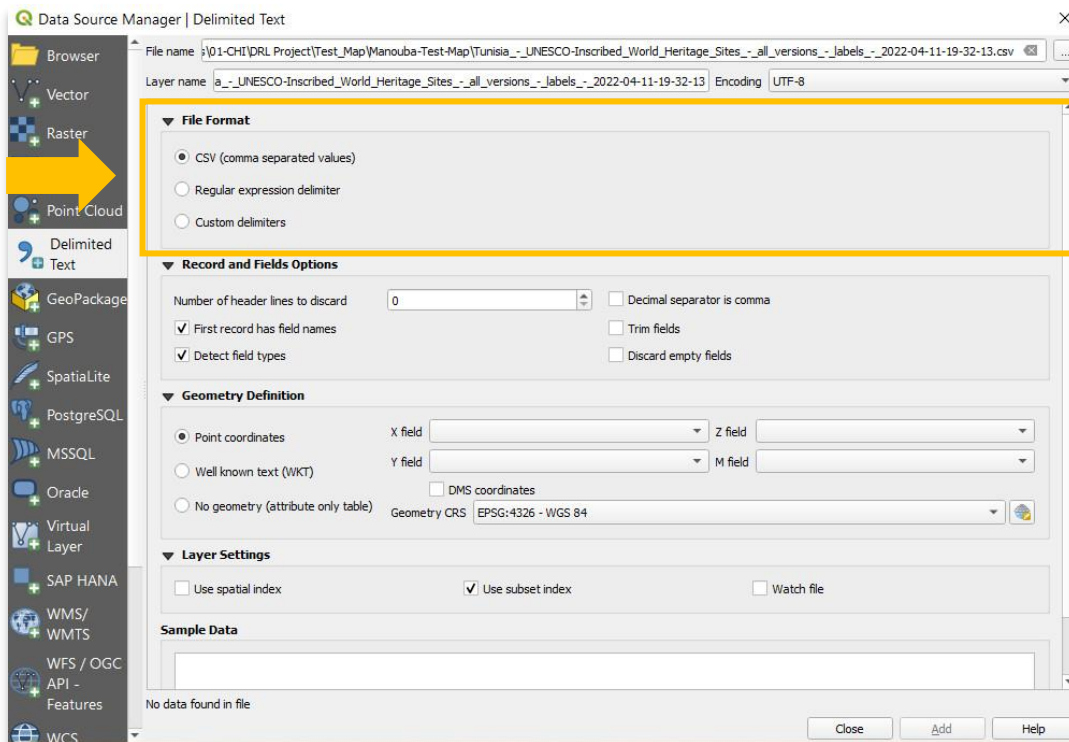
2. You may also use sample data from ASOR's tutorial webpage: <https://www.asor.org/chi/chi-tutorials>. Download the **UNESCO-Inscribed World Heritage Sites in Tunisia** CSV file.



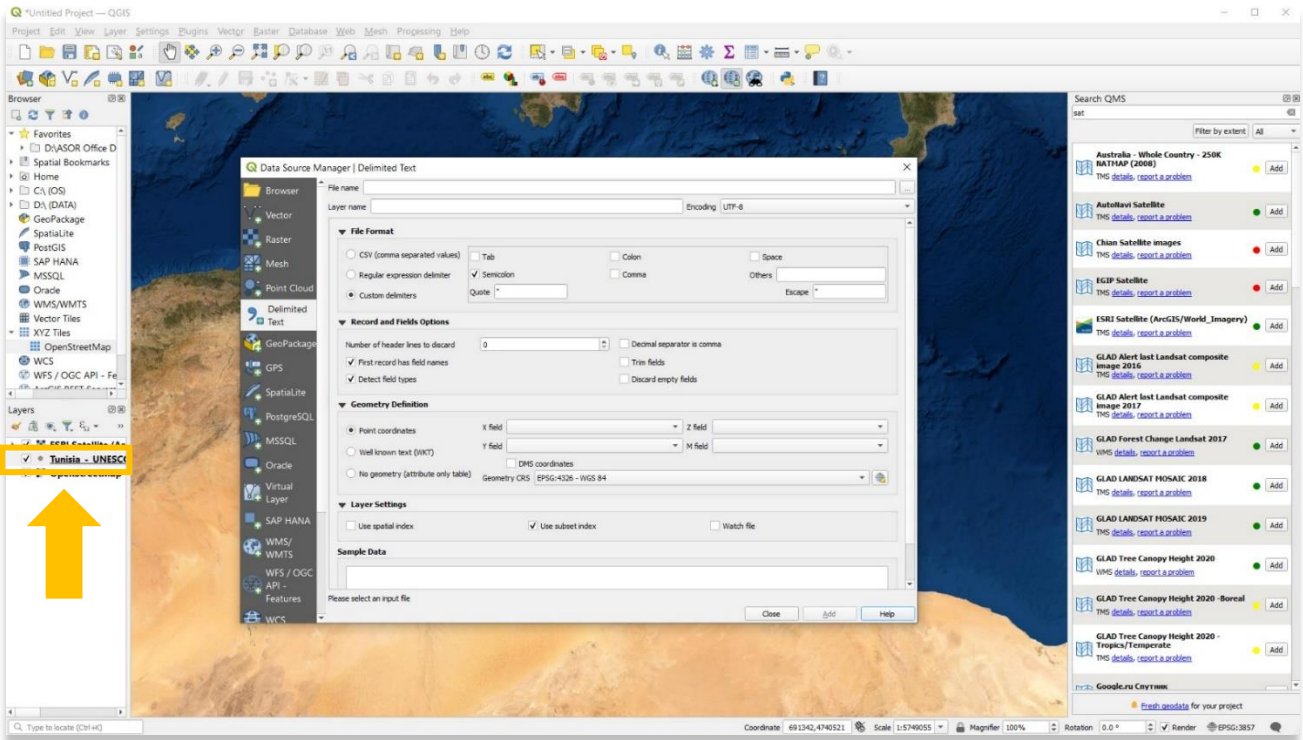
3. In the pop-up, select the button with **three dots (...)** to find your **csv** file on your computer. Once located, select the **csv** file and press **Open**.



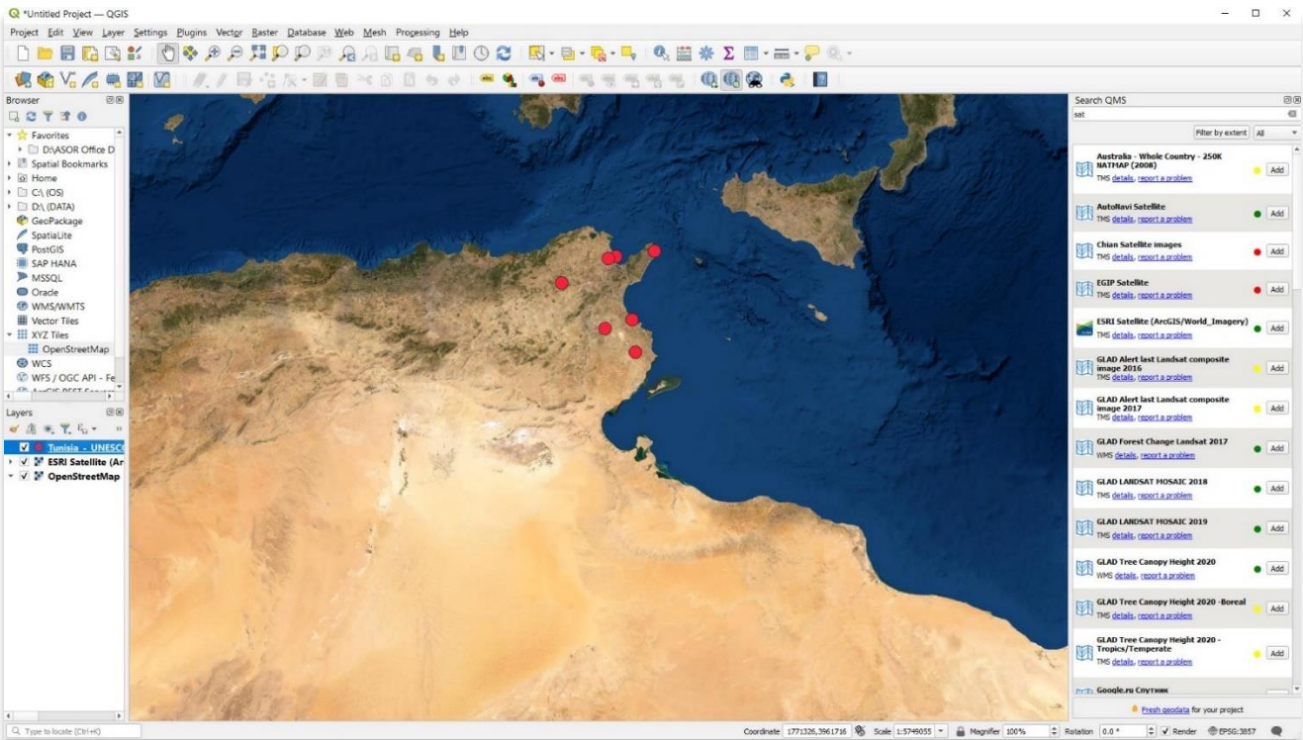
4. Under File Format, the ability to assign spatial information (X & Y fields) and to add the CSV file to the project is unavailable. Recall from [ASOR Tutorial 01.08 \(Exporting Data from a KoboToolBox Project\)](#) that our CSV file is separated by semi-colons. In order to add Kobo data, we need to select **Custom Delimiters > Semi-colons**.



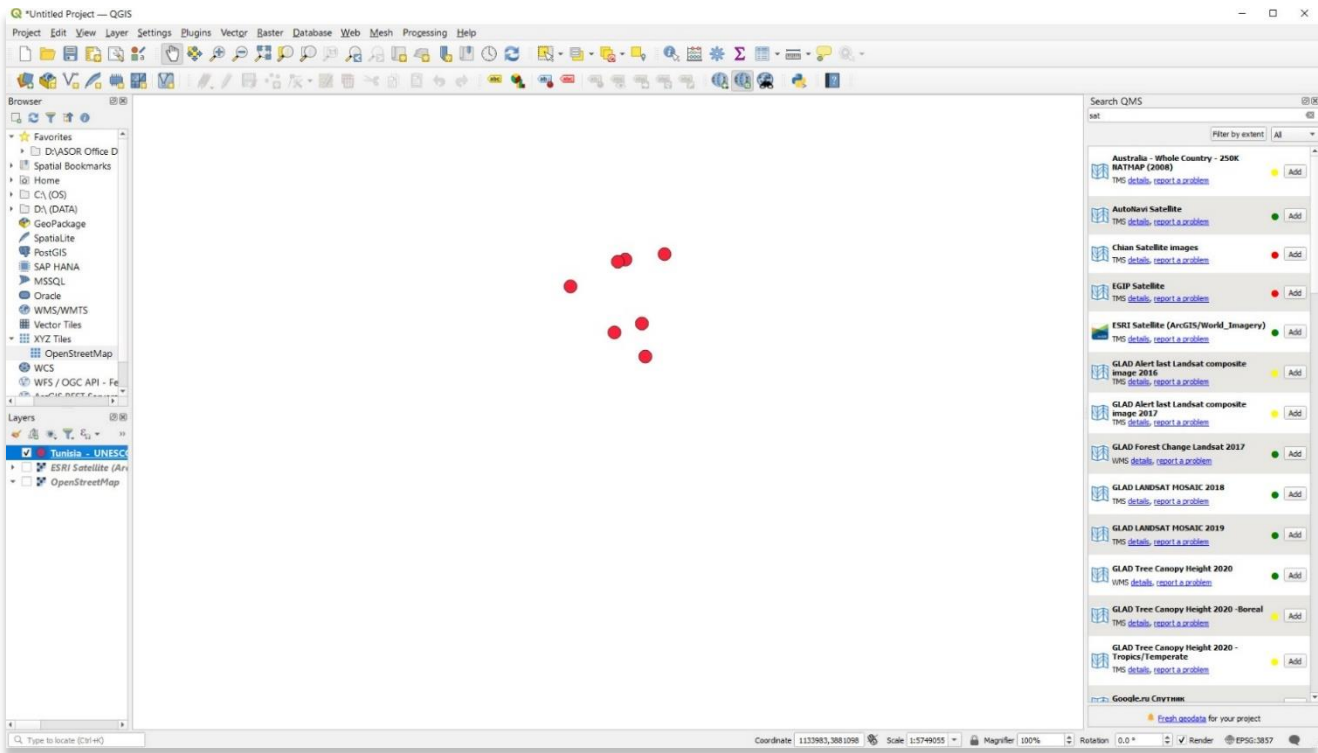
5. Select **Add**. Your new point (csv) layer will now appear in the **Layers Panel** located in the bottom left of your project. This means that you have successfully added the csv file to your QGIS project. You can close the Data Source Manager pop-up to view your data.



6. Below is a view of the QGIS project with both the KoboToolBox layer and the OpenStreetMap basemaps set to visible. Please note that the colors and styles for each layer in your project are likely different than the ones shown here.



- Here is the view when the OpenStreetMap layers have been unchecked and are no longer visible, leaving only the KoboToolBox data visible.



For more detailed information on anything within this tutorial, please visit QGIS Documentation:
<https://docs.qgis.org/3.16/en/docs/index.html>



VIEW ALL ASOR TUTORIALS FOR FREE
asor.org/chi/chi-tutorials