



KOBO TOOLBOX

Collecting Data Using the KoBoCollect App on an
Android Phone or Tablet (01.05)

William Reynolds

Jared Koller

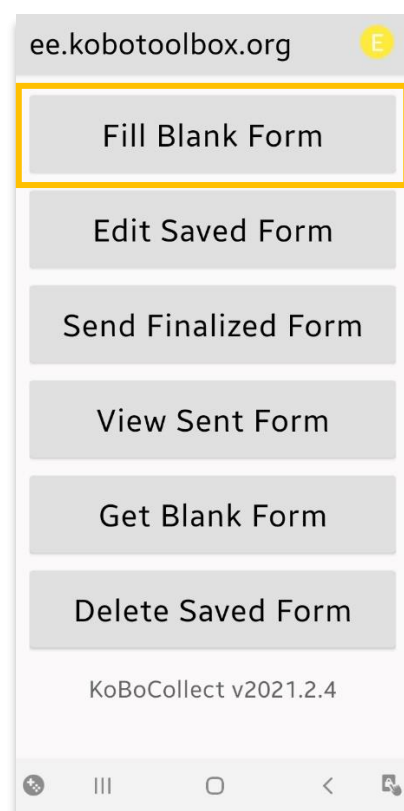
ABOUT KOBO TOOLBOX

KoBoToolbox is a free and open source software package for location and descriptive data collection. Information can be collected at heritage sites through tablets and phones using the KoBoCollect app or through the web browser interface, even when those devices are offline. Location and descriptive data recorded in the field can then be synched up with GIS software once an internet connection has been reestablished.

This **ASOR tutorial (01.05)** will cover how to collect data using the KoBoCollect App on an Android phone or tablet.

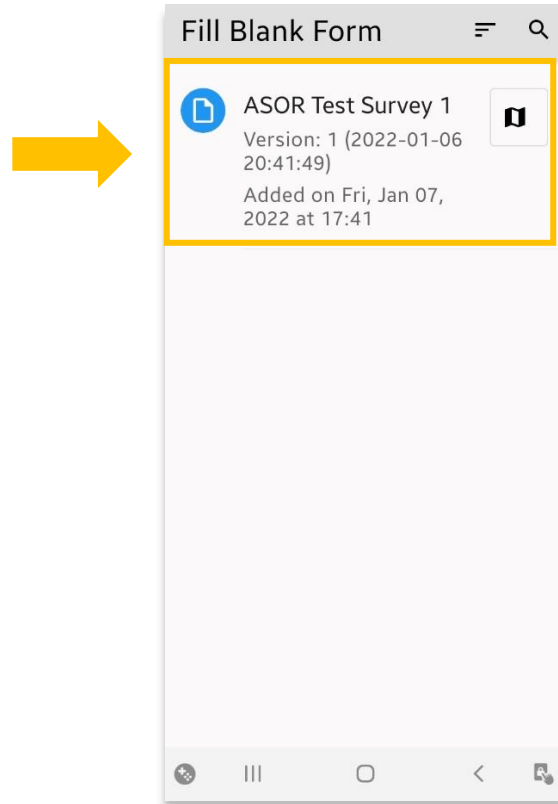
WORKFLOW | DATA COLLECTION WITH THE KOBOCOLLECT APP

1. Open the KoBoCollect application. From the main dashboard, select **Fill Blank Form**.



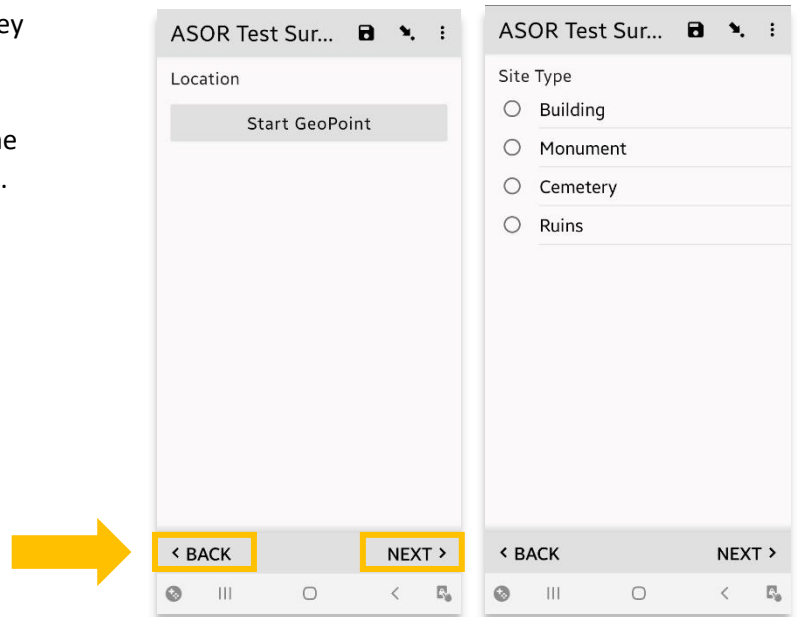
2. Select **ASOR Test Survey 1**.

If this project does not appear, please refer to [ASOR Tutorial 01.04 \(Downloading the KoBoCollect App & Syncing it with a KoboToolBox Project\)](#) for instructions on how to link the KoBoConnect app to your project.



3. Each question that you created for your survey will appear on its own screen in the app.




You can navigate between questions using the **Back** and **Next** links at the bottom of the app.



4. Click **Save Form and Exit** when finished entering data for this entry.

Also check the box for **Mark form as finalized**.



ASOR Test Sur...   

You are at the end of ASOR Test Survey 1.

Name this form
ASOR Test Survey 1

Mark form as finalized

Save Form and Exit


< BACK

5. The data you just collected has now been stored on the KoBoCollect app (even without an internet connection).

You can send this data to your project page on KoBoToolBox by selecting the **Send Finalized Form** button. *

* This process requires an internet connection.



ee.kobotoolbox.org 

Fill Blank Form

Edit Saved Form (1)

Send Finalized Form (1)

View Sent Form

Get Blank Form

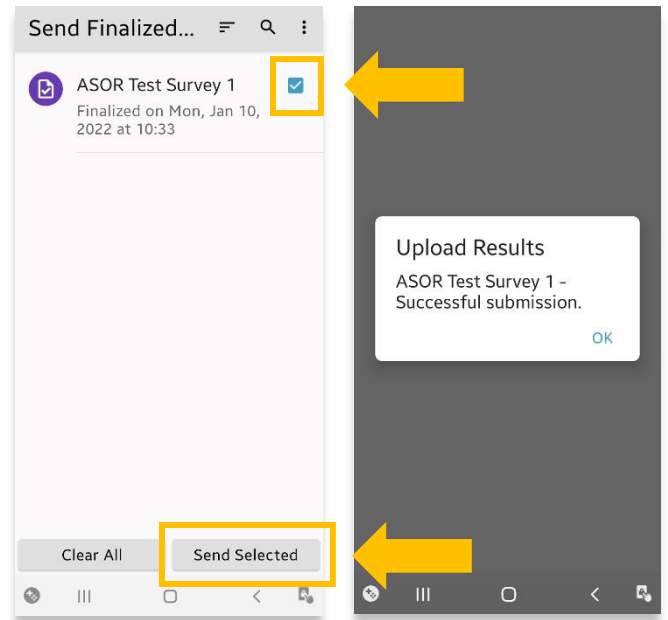
Delete Saved Form

KoBoCollect v2021.2.4

6. Choose the project you wish to send your data to. In this case it is the **ASOR Test Survey 1**, which was created in [ASOR Tutorial 01.02 \(Creating a New Survey/Project\)](#).

Press the **Send Selected** button.

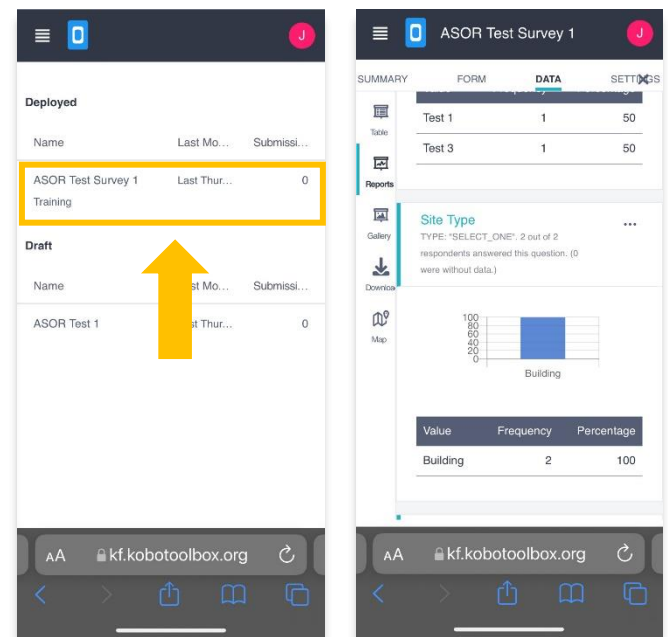
You will receive a confirmation popup message if the process is successful.



7. In a web browser return to KoBoToolBox: <https://kf.kobotoolbox.org/accounts/login/>.

Click on your project and you will now be able to access the data that you collected.

You access this information on a phone, tablet, or computer.





asor

CULTURAL HERITAGE INITIATIVES

VIEW ALL ASOR TUTORIALS FOR FREE

asor.org/chi/chi-tutorials