

# ASOR Syrian Heritage Initiative (SHI): Planning for Safeguarding Heritage Sites in Syria<sup>1</sup>

NEA-PSHSS-14-001

Weekly Reports 16–17 – December 1, 2014

Michael D. Danti and Cheikhmous Ali

## Heritage Timeline

- November 26, 2014** **DGAM** posted a short report from the Idlib Department of Antiquities detailing vandalism at the archaeological site of **Tell Ramla**. **SHI Incident Report SHI14-093**.  
<http://www.dgam.gov.sy/index.php?d=314&id=1519>
- **DGAM** posted a short report from the Idlib Department of Antiquities detailing illegal construction at the archaeological site of **Kafr Hawar**. **SHI Incident Report SHI14-092**.  
<http://www.dgam.gov.sy/index.php?d=314&id=1519>
  - **DGAM** posted a short report from the Idlib Department of Antiquities detailing illegal construction, vandalism, and illicit excavations at the archaeological site of **Balyun**. **SHI Incident Report SHI14-091**.  
<http://www.dgam.gov.sy/index.php?d=314&id=1519>
- November 25, 2014** **APSA and DGAM** reported that an airstrike in Raqqa damaged the façade, main entrance, and windows of the **Raqqa Museum**. **SHI Incident Report SHI14-090**.  
<http://www.apsa2011.com/index.php/en/provinces/ar-raqqah/museums/1042-raqqah-musee-archeologique-2.html>  
<http://www.dgam.gov.sy/index.php?d=314&id=1517>
- **APSA** reported on information released by **Tayyibat al-Imam Media Office** regarding a mosaic uncovered by Opposition forces at **Tell al-Seman** in Hama Governorate. **SHI Incident Report SHI14-089**.  
<http://apsa2011.com/index.php/en/provinces/hama/sites/1038-hama-tybet-al-seman.html>
  - **Kirkuk Now and Rudaw** reported that Islamic State destroyed the **Shrine of Sheikh Ismail** south of Kirkuk. posted a short report from the Idlib Department. <http://rudaw.net/arabic/kurdistan/261120144>  
<http://kirkuknow.com/arabic/?p=39867#ixzz3KCDtv1q4>

---

<sup>1</sup> This report is based on research conducted by the “Syria Preservation Initiative: Planning for Safeguarding Heritage Sites in Syria.” Weekly reports reflect reporting from a variety of sources and may contain unverified material. As such, they should be treated as preliminary and subject to change.

- November 24, 2014** DGAM posted a short report from the Idlib Department of Antiquities that **IDPs** have taken up residence in the Byzantine ruins of **Shinshara/Khirbet Hass** [the DGAM's **Shinshrah**] in the UNESCO World Heritage Site, Ancient Villages of Northern Syria. **SHI Incident Report SHI14-088**.  
<http://www.dgam.gov.sy/index.php?d=314&id=1513>
- *Alsumaria News* claimed Islamic State destroyed the **Church of St. George** north of Mosul. <http://www.alsumaria.tv/news/117103/>
- November 22, 2014** APSA released 25 photos and a video showing the current state of the **Bab al-Hadid** and the **Suq al-Zeher in Aleppo**. **SHI Incident Report SHI14-087**.  
<http://apsa2011.com/index.php/en/provinces/aleppo/monuments/1035-aleppo-bab-al-hadid-souk-al-zeher.html>
- DGAM reported the **recovery** of three funerary sculptures from **Palmyra Taibul Tomb (H)** of the Southeast Necropolis. **SHI Incident Report SHI14-086**.  
<http://www.dgam.gov.sy/index.php?d=314&id=1511>
- November 20, 2014** •APSA posted its third report on the looting of **Apamea** with 31 photos. **SHI Incident Report SHI14-085**.  
<http://www.apsa2011.com/index.php/en/provinces/hama/sites/1032-apamea-20-11-2014.html>
- DGAM posted reports on the condition of **Tell Sheikh Hasan** in Raqqa Governorate. The site has been looted and Islamic State extremists have allegedly blown up a shrine, presumably Sufi, located atop the site. The **local community** reportedly **stopped the illegal excavations**. **SHI Incident Report SHI14-084**.  
<http://www.dgam.gov.sy/index.php?d=314&id=1509>
- November 19, 2014** DGAM posted a short report from Idlib Department of Antiquities detailing damage from illegal excavations at **Kafr Aqab**, UNESCO World Heritage Site, Ancient Villages of Northern Syria. **SHI Incident Report SHI14-083**.  
<http://www.dgam.gov.sy/index.php?d=314&id=1507>
- November 17, 2014** DGAM posted a short report from Idlib Department of Antiquities on the state of **Harim Castle**. **SHI Incident Report SHI14-082**.  
<http://www.dgam.gov.sy/index.php?d=314&id=1503>
- See also the **APSA** video of 2012  
<http://www.apsa2011.com/index.php/en/provinces/idlib/sites/180-harem-report-on-the-damage-to-the-harem-citadel.html>

## Military and Political Context

The primary theaters of combat in Syria and Iraq during the reporting period included<sup>2</sup>:

- 1) The southeast Aleppo countryside, where a coalition of Salafist forces including Jabhat al-Nusra are gaining territory in their attempt to capture the SARG-controlled al-Safira industrial facility;
- 2) The northwest Aleppo countryside, where Jabhat al-Nusra, Islamic Front, and FSA forces are besieging regime positions (allegedly supported by local Afrin-area YPG) in the villages of Nubl and Zohra in an attempt to secure new supply lines from the Turkish border;
- 3) Clashes in the Eastern Ghouta area of Damascus between Islamist groups vying for control of rebel activities there;
- 4) Ongoing clashes in Kobani between YPG and Islamic State;
- 5) Clashes between rebel forces and the regime in the Qalamoun area;
- 6) Northern Iraq, where Islamic State has lost territory in Salah al-Din Province (esp. the Baiji area where there are ongoing clashes between Islamic State and Iraqi forces) and in the hotly-contested Diyala region;
- 7) Kirkuk, where Islamic State appears to be attempting to shift Peshmerga forces away from Sinjar and Diyala by focusing efforts south and west of the city;
- 8) Ramadi in Al-Anbar Province, which continues to be threatened by Islamic State forces;
- 9) U.S./ Coalition airstrikes in the areas of Ramadi, Kirkuk, and north of Raqqa;
- 10) Intensive SARG airstrikes on Raqqa.

In Iraq, Islamic State strategy continues to center on controlling key routes in and out of Baghdad in an apparent attempt to contain Iraqi offensive capabilities and consolidate IS's southern front at this key choke point. Attacks in the Kirkuk area were accompanied by at least one reported intentional destruction of a heritage place — Islamic State reportedly blew up the Shrine of Sheikh Ismail south of Daquq in the village of Hbejh (46km south of Kirkuk city)<sup>3</sup>. Another unverified Islamic State destruction of a heritage place — the Church of St. George north of Mosul — was reported in news media and will be further investigated by ASOR CHI<sup>4</sup>. The acceleration of Islamic State activity in northern Iraq seems to be placing cultural heritage at heightened risk similar to the situation earlier in the year when IS forces moved on Mosul. The situation in Syria continues to place heritage at high risk, and the number of

---

<sup>2</sup> For more detailed information on recent military activity in Iraq and Syria see Adnan, Sinan, Ahmed Ali, and Aaron Reese. 2014. *Iraq Situation Report: Nov. 25–26, 2014* (Institute for the Study of War). Cafarella, Jennifer and Christopher Kozak. *Syria Update: November 18–25, 2014* (Institute for the Study of War).

<sup>3</sup> For additional information, see *Kirkuk Now*. “Daash Blow Up a Religious Shrine South of Daquq.” (Nov. 25, 2014). <http://kirkuknow.com/arabic/?p=39867#ixzz3KCDtv1q4>. *Rudaw*. “Daash Planning an Attack on Daquq.” (Nov. 26, 2014). <http://rudaw.net/arabic/kurdistan/261120144>

<sup>4</sup> *Alsumaria*. “Organization ‘Daash’ Blows Up George’s Church North of Mosul. (Nov. 24, 2014). <http://www.alsumaria.tv/news/117103/>

weekly heritage incidents has remained elevated. Most distressing are the reported incidents in the Dead Cities region of northwest Syria.

## **Key Heritage Recommendations and Actions**

1) Accelerated Islamic State activity in northern Iraq appears to be associated with renewed intentional destructions of heritage places.

\*ASOR CHI will continue to gather data on these destructions and seek to verify these claims. In the past, some claims were found to be false, exaggerated, or speciously attributed to Islamic State, although generally IS uses such attacks to create waves of IDPs to hinder their opponents and to deepen sectarian and ethnic divisions. Such a strategy has the potential to fuel tensions in the Kirkuk area, increasing already cumbersome security demands on KRG Peshmerga forces in and around the city.

## Incident Reports

### SHI 14-082

**Report Date:** November 28, 2014

**Site Name:** Harim Castle

**Date of Incidents:** 2012–2013

**Location:** Idlib Governorate, 55 km west of Aleppo on Turkish border

**Coordinates:** Lat. 36.207360, Lon. 36.519263

**Site Description:** According to Burns, “The town [of Harim] dates back at least to late Byzantine times but its main asset is a 12<sup>th</sup> century Ayyubid fortress that dominates the centre of the town from a partly artificial mound.”<sup>5</sup>

**Site Date:** Late Byzantine–Mamluk

**Source of Destruction:** The DGAM reports “few illegal excavations” in the area of the market. Some damage has occurred to walls during combat since 2012. The iron gates and bars protecting the castle interior have all been removed except the main gateway, and the secret entrances into the castle have been blocked with stone. Excavation equipment has been stolen from the main storehouse, and a new brick structure has been erected at the top of the castle for use by “armed gangs.”

**Pattern:** Minor looting. Urban warfare.

**Monitoring Recommendations and Mitigation Measures:** Harim has not been a high priority for ASOR SHI monitoring efforts. The site has high potential for mitigation efforts, but the current security situation may prevent implementing even small-scale projects.

#### Sources:

Online Reporting:

DGAM Website:

<http://www.dgam.gov.sy/index.php?d=314&id=1503>

APSA Website:

<http://www.apsa2011.com/index.php/en/provinces/idlib/sites/180-harem-report-on-the-damage-to-the-harem-citadel.html>

---

<sup>5</sup> Burns 2009: 167.

Scholarly:

Burns, Ross. 2009. *The Monuments of Syria. A Guide.* (I.B. Tauris), pp. 167–9.



Recent damage to Harim Castle (DGAM).



The pathway leading up to Harim Castle (DGAM).



View of Harim Castle (DGAM).



The glacis of Harim Castle near the main entrance — it is similar to that of the Aleppo Citadel (DGAM).



Interior of Harim Castle (DGAM).





Harim Castle (DGAM).



Interior of Harim Castle (DGAM).



Interior of Harim Castle (DGMA).



Excavation areas in the market area of Harim Castle (DGAM).



Interior of Harim Castle (DGAM).



Harim Castle (DGAM).



Harim Castle (DGAM).



Iron Bars removed from passageways in Harim Castle (DGAM).



Interior of Harim Castle (DGAM).



Harim Castle (DGAM).



View of Harim Castle from the modern town of the same name (DGAM).



Harim Castle (DGAM).



The main entrance of Harim Castle (DGAM).



Harim Castle from the modern town (DGAM).



Harim Castle (DGAM).



Harim Castle (DGAM).





Interior corridors of Harim Castle showing recent vandalism (DGAM).



Harim Castle interior (DGAM).



Harim Castle (DGAM).

## SHI 14-083

**Report Date:** November 28, 2014

**Site Name:** Kafr Aqab, UNESCO World Heritage Site, Ancient Villages of Northern Syria (Jebel Wastani Park)

**Date of Incident:** Unspecified

**Location:** Idlib Governorate

**Coordinates:** Jebel Wastani Park (Lat. 36.034167, Lon. 36.447294)

**Site Description:** Little information is available on Kafr Aqab. Time has not permitted a thorough search through Tchalenko.

**Site Date:** Byzantine

**Source of Destruction:** According to the Idlib Department of Antiquities, the site has suffered from vandalism and illicit excavations.

**Pattern:** Looting of sites in the parks included within the UNESCO World Heritage Site, Ancient Villages of Northern Syria.

**Monitoring Recommendations and Mitigation Measures:** ASOR SHI has already designated the parks within this UNESCO WHS as high priorities for monitoring and remediation efforts.

### Sources:

#### Online Reporting:

DGAM Website: <http://www.dgam.gov.sy/index.php?d=314&id=1507>

#### Scholarly:

See especially the UNESCO website — the Jebel Wastani Park is not well documented in public sources, and currently the UNESCO map of this park is unavailable.

<http://whc.unesco.org/en/list/1348>



Kafr Aqab in the UNESCO WHS – Jebel Wastani Park (DGAM).



Kafr Aqab in the UNESCO WHS – Jebel Wastani Park (DGAM).



Kafr Aqab in the UNESCO WHS – Jebel Wastani Park (DGAM).



Kafr Aqab in the UNESCO WHS – Jebel Wastani Park (DGAM).



Kafr Aqab in the UNESCO WHS – Jebel Wastani Park (DGAM).



Kafr Aqab in the UNESCO WHS – Jebel Wastani Park (DGAM).



Kafr Aqab in the UNESCO WHS – Jebel Wastani Park (DGAM).



Kafr Aqab in the UNESCO WHS – Jebel Wastani Park (DGAM).



Kafr Aqab in the UNESCO WHS – Jebel Wastani Park (DGAM).



Kafr Aqab in the UNESCO WHS – Jebel Wastani Park (DGAM).





Kafr Aqab in the UNESCO WHS – Jebel Wastani Park (DGAM).



Kafr Aqab in the UNESCO WHS – Jebel Wastani Park (DGAM).



Kafr Aqab in the UNESCO WHS – Jebel Wastani Park (DGAM).



Kafr Aqab in the UNESCO WHS – Jebel Wastani Park (DGAM).



Kafr Aqab in the UNESCO WHS – Jebel Wastani Park (DGAM).



Kafr Aqab in the UNESCO WHS – Jebel Wastani Park (DGAM).



Kafr Aqab in the UNESCO WHS – Jebel Wastani Park (DGAM).



Kafr Aqab in the UNESCO WHS – Jebel Wastani Park (DGAM).



Kafr Aqab in the UNESCO WHS – Jebel Wastani Park (DGAM).



Kafr Aqab in the UNESCO WHS – Jebel Wastani Park (DGAM).



Kafr Aqab in the UNESCO WHS – Jebel Wastani Park (DGAM).



Kafr Aqab in the UNESCO WHS – Jebel Wastani Park (DGAM).

## SHI 14-084

**Report Date:** November 28, 2014

**Site Name:** Tell Sheikh Hasan

**Date of Incident:** Unspecified

**Location:** Raqqa Governorate ca. 50 km. north of Raqqa on the left bank of the Balikh River — not to be confused with Tell Sheikh Hassan in the Euphrates region.

**Coordinates:** Lat. 36.327092, Lon. 39.051305

**Site Description:** Archaeological mound 50–55 km north of Raqqa with substantial deposits of the Byzantine period. The DGAM reports that a shrine on the summit of the mound, probably a Sufi shrine, was destroyed by Islamic State “similar to the rest of the shrines in the area.” The DGAM also reports small-scale subsistence looting. DGAM reports,

According to the information received from Tell Sheikh Hasan (located in the left bank of Balikh river in northern Syria 50-55 km north of Raqqa), the site had previously been subjected to acts of excavation and digging by antiquities small groups thieves without using machines.

The shrine which was built on the site was bombed by ISIS similar to the rest of the shrines in the area. The illegal excavations stopped currently in favor of the local community cooperation in protecting the site.

The excavations results in Tell Sheikh Hasan indicate the existence of several buildings, churches, Hamams and residential houses dating back to the Byzantine period; as well as potteries and ceramics dating back to the Mamluk and early Abbasid era.

**Site Date:** Roman-Parthian, Byzantine, Abbasid, Mamluk

**Source of Destruction:** Illegal excavations of the Byzantine deposits. ISIL intentional destruction of a [Sufi?] shrine atop the mound. Comparison of Digital Globe imagery from June 11, 2008 and June 19, 2014 shows no substantial looting activity or evidence of the shrine allegedly destroyed by ISIL. Perhaps it was located in one of the nearby villages?

**Pattern:** Alleged ISIL intentional destruction of built heritage. Alleged small-scale subsistence looting.

**Monitoring Recommendations and Mitigation Measures:** ASOR SHI may request new satellite imagery of Tell Sheikh Hasan. The most recent Digital Globe image dates to June 19, 2014. DGAM reports that locals are now protecting the site.



## Sources:

### Online Reporting:

DGAM Website: <http://www.dgam.gov.sy/index.php?d=314&id=1509>

### Scholarly:

See esp. Bartl, K. 1993. 'The Balih Valley: northern Syria during the Islamic period: remarks concerning the historical topography'. " *Berytus* 41: 29–38.

\_\_\_\_\_. 1994. "Tell Sheikh Hasan: a settlement of the roman-parthian to the islamic period in the Balikh valley/northern Syria." *Archéologie Islamique* 4: 5–17.

\_\_\_\_\_. "Tell Sheikh Hassan: Funde aus römisch-parthischer, spätrömisch-frühbyzantinischer und islamischer Zeit." *Archiv für Orientforschung* (1999): 447–489.



Tell Sheikh Hasan showing some evidence of disturbance of previously excavated areas (DGAM).



Excavations at Tell Sheikh Hasan — date unknown (DGAM).



Tell Sheikh Hasan (DGAM).



Tell Sheikh Hasan showing some evidence of disturbance of previously excavated areas (DGAM).



Tell Sheikh Hasan mosaic — date unknown (DGAM).



Tell Sheikh Hasan mosaic — date unknown (DGAM).



Objects allegedly from Tell Sheikh Hasan (DGAM).

## SHI 14-085

**Report Date:** November 28, 2014

**Site Name:** Apamea (See also SHI 14-034)

**Date of Incident:** Unspecified (during period of SARG control)

**Location:** Apamea, Hama Governorate, 55 km north of Hama

**Coordinates:** Lat. 35.42124, Lon. 36.40165

**Site Description:** According to Ross Burns,

The mound of Qalaat Mudiq ('fortress of the defile') lies west of the classical walled city and is still occupied by some of the town's inhabitants. The mound, an artificial accumulation on a natural rocky outcrop, has indications of settlement going back at least to the Bronze Age. The site was chosen as the location for one of the four cities founded by Seleucus I Nicator at the end of the fourth century BC. Originally named Pharnake, the name was changed to Apameia to honour Seleucus' Persian wife, Apama [...] In 64 BC, Apamea was taken by the Romans under Pompey and its citadel was razed. Under Roman rule, it was again favoured as a military base. The theatre, baths, temples, and villas, constructed during the town's peak period of prosperity, the boom years of the second century AD, were perhaps initiated when Trajan ordered the rebuilding of the city after a severe earthquake in 115. The colonnaded main street was completed in its present form under Marcus Aurelius (161–80) and served both as an axis and a market, lined with stalls and shaded arcades<sup>6</sup>.

**Site Date:** Various, mainly Hellenistic, Roman, Byzantine, Medieval, and Ottoman

**Source of Destruction:** APSA previously posted two videos filmed by Thabet Ismael that highlight the clandestine operations underway at Apamea. The second video in particular shows the official army checkpoint, earth dikes, and the installation of heavy weapons in the archaeological area.

The APSA report attributes the damage to two primary causes: the conversion of the site into a military camp and the intentional looting of the site. The former has meant the presence of tanks and the digging of trenches, while the latter has resulted in pits up to two meters deep. The number of pits far exceeds the excavated areas from the Belgian archaeological mission (aerial photographs from April 2013 showed over 5,000 looter holes), highlighting the massive scale of the illicit digging.

**Pattern:** Looting and vandalism of archaeological sites during militarization.

**Monitoring Recommendations and Mitigation Measures:** ASOR SHI has already designated Apamea a high priority site for monitoring.

**Sources:**

---

<sup>6</sup> Burns, Ross. 2010. *The Monuments of Syria. A Guide*. (I.B. Tuaris), p. 60.

Online Reporting:

Scholarly:

Balty, J. (1997). Apamea. In *The Oxford Encyclopedia of Archaeology in the Near East*. Oxford University Press.

Balty, J. (1969). *Colloque Apamée de Syrie* (p. 147). Leiden: Centre Belge de recherches archéologiques à Apamée de Syrie.

Balty, J. (1972). *Colloque Apamée de Syrie* (p. 283). Leiden: Centre Belge de Recherches Archéologiques à Apamée de Syrie.

Balty, J. (1981). *Guide d'Apamée* (p. 224). Bruxelles: Centre belge de recherches archéologiques à Apamée de Syrie. Retrieved from <http://books.google.com/books?id=7DqFAAAAIAAJ&pgis=1>

Balty, J. (1984). *Aspects de l'Architecture Domestique d'Apamée* (p. 524). Bruxelles: Centre belge de recherches archéologiques à Apamée de Syrie. Retrieved from <http://books.google.com/books?id=s7ptAAAAMAAJ&pgis=1>

UNESCO World Heritage Centre. (n.d.). Apamée (Afamia). Retrieved July 23, 2014, from <http://whc.unesco.org/en/tentativelists/1297/>

Zablit, J. (2012, April 5). Looters tear up Syria's archaeological treasures. *Archaeology News*. Retrieved from <http://archaeologynewsnetwork.blogspot.co.uk/2012/04/looters-tear-up-syria-archeological.html>



Looting damage at Apamea (APSA).



Looting damage at Apamea (APSA).



Looting damage at Apamea (APSA).



Looting damage at Apamea (APSA).





Apamea (APSA).



Apamea (APSA).



Motorcycles, probably belonging to looters, at Apamea (APSA).



Motorcycles, probably belonging to looters, at Apamea (APSA).



Apamea (APSA).



Apamea (APSA).



Looting damage at Apamea (APSA).



Looting damage at Apamea (ASPA).



Apamea (APSA).



Apamea (APSA).



Looting damage at Apamea (APSA).



Apamea (APSA).



Apamea (APSA).



Looting damage at Apamea (APSA).



Apamea (APSA).



Apamea (APSA).





Apamea (APSA).



Apamea (APSA).



Looting damage at Apamea (APSA).



Looting damage at Apamea (APSA).



Looting damage at Apamea (APSA).



Looting damage at Apamea (APSA).



Looting damage at Apamea (APSA).



Apamea (APSA).



Looting damage at Apamea (APSA).



Apamea (APSA).



A looter (?) at Apamea (APSA).

## SHI 14-086

**Report Date:** November 28, 2014

**Site Name:** Palmyra — Palmyra, Southeast Necropolis, Taibul Tomb (Tomb H), UNESCO World Heritage Site, Ancient City of Palmyra (see also SHI14-019, 023, 027, 073)

**Date of Incident:** Unspecified

**Location:** Homs Governorate

**Coordinates:** —

**Site Description:** Tomb H of the Southeast Necropolis of Palmyra (UNESCO World Heritage Site, Site of Palmyra, 1980) is a subterranean tomb of the 2<sup>nd</sup>–3<sup>rd</sup> centuries AD. Several tombs were scientifically excavated in this area by a Japanese mission headed by Kiyohide Saito (Archaeological Institute of Kashihara, Nara) between 2001 and 2004. Subsequently these tombs were conserved and used as site museums.

**Site Date:** 2<sup>nd</sup>–3<sup>rd</sup> Centuries AD

**Source of Destruction:** Theft from site museum. The perpetrators and the circumstances of the original theft and the sculpture's recovery are currently unknown. Cunliffe notes<sup>7</sup>, "It has been suggested that at Palmyra government troops were involved [in looting], or at least complicit, as from their base in the ruins, any looting would theoretically have been visible to them, although this cannot be verified." The DGAM *Annual Report 2013* states<sup>8</sup>,

Digs are spreading within the southeastern cemeteries area [of Palmyra] previously excavated in an attempt to open some of them. Furthermore, it is not possible, for the time being, to estimate the extent of the damage caused by these digs prior to carrying out detailed inspection as well as removing the dust covering those graves.

In early 2014, the DGAM announced the recovery of large numbers of antiquities<sup>9</sup>, including material from Palmyra,

The DGAM has returned more than 4000 archaeological artifacts during the past year through confiscations carried out by the concerned bodies (the police, the customs, the governorate, the municipalities and other public bodies) in Damascus, Tartus, Palmyra, Homs, Hama, Deir ez-Zor, etc. Furthermore, the concerned authorities returned a treasure containing 1600 silver-plated bronze coins, discovered in the region of al-Shaer mountain between Palmyra and Homs, in addition to tens of artifacts which were about to be smuggled since June 2013.

**Pattern:** Looting during militarization of archaeological site by SARG.

---

<sup>7</sup> Cunliffe 2012: 14–15.

<sup>8</sup> DGAM 2014: 19.

<sup>9</sup> DGAM 2014: 23–24.

**Monitoring Recommendations and Mitigation Measures:** Several incidents of theft are known from Palmyra that occurred prior to the inception of SHI in August 2014 (see esp. the lists of incidents compiled by Emma Cunliffe). The chronology of thefts and their reporting is difficult to disentangle. Numerous Palmyrene objects are likely circulating through the illegal antiquities markets. SHI is currently completing Incident Reports for previous alleged and verified thefts. Palmyrene material culture is well documented and stylistically distinct, and is therefore readily traceable. This poses high risks of prosecution for the dealers and buyers of illicit Palmyrene antiquities.

### Sources:

#### Online Reporting:

DGAM Website: <http://www.dgam.gov.sy/index.php?d=314&id=1511>

APSA website covered the recovery of nine Palmyrene sculptures by the Palmyra Department of Antiquities.

<http://www.apsa2011.com/index.php/en/provinces/homs/palmyra/794-nine-statues-seized-by-the-palmyra-department-of-antiquities.html>

DGAM Website — one photo and short report.

<http://www.dgam.gov.sy/?d=314&id=1391>

DGAM. 2014. *Annual Report 2013* (January 2014).

[https://www.academia.edu/6029925/The\\_annual\\_report\\_of\\_DGAM\\_Directorate\\_General\\_of\\_Antiquities\\_and\\_Museums\\_in\\_Syria\\_2013](https://www.academia.edu/6029925/The_annual_report_of_DGAM_Directorate_General_of_Antiquities_and_Museums_in_Syria_2013)

Cunliffe, Emma. 2012. *Damage to the Soul: Syria's Cultural Heritage in Conflict*. Global Heritage Fund.

[http://ghn.globalheritagefund.com/uploads/documents/document\\_2107.pdf](http://ghn.globalheritagefund.com/uploads/documents/document_2107.pdf)

#### Scholarly:

Saito, Kiyohide 2005. "Japanese Archaeological Works at the Southeast Necropolis in Palmyra," *Palmyra II* (Schmidt-Collnet, Andreas(ed.) 2005. (Mainz).

\_\_\_\_\_. 2005. "New Discovery in Palmyra 2001," *The International Conference on Zenobia & Palmyra*. (Al-Baath University).

\_\_\_\_\_. 2005. "Excavation of Tomb H at the Southeast Necropolis in Palmyra 2004," *Reconstruction of the Ancient Orient in 2004-Proceedings of the 12<sup>th</sup> Annual Meeting of Excavation in West Asia* (Japanese Society for West Asian Archaeology)(in Japanese), pp. 83–90.



\_\_\_\_\_. 2004. "Lamps and the dead in Palmyrian underground tombs," *Collected Articles and Essays in Honour of His Highness Prince Micasa on the Occasion of His Eighty-Eighth Birthday* (Tousui Shobo Publishers)(in Japanese), pp. 363–380.

\_\_\_\_\_. 2004. "Female burial characteristics in Palmyra," *The 11<sup>th</sup> Hellenistic-Islamic Archaeological Studies* (Society for Hellenistic-Islamic Archaeological Studies)(in Japanese), pp. 15–19.

\_\_\_\_\_. 2004. "Excavation of Tomb H at the Southeast Necropolis in Palmyra 2003," *Reconstruction of the Ancient Orient in 2003-Proceedings of the 11<sup>th</sup> Annual Meeting of Excavation in West Asia* (Japanese Society for West Asian Archaeology)(in Japanese), pp. 62–69.

\_\_\_\_\_. 2004. "Palmyra as a Field Museum," *Journal of Arid Land Studies* (Japanese Association for Arid Land Studies)(in Japanese): 69–74.

\_\_\_\_\_. 2002. "A Few Aspects of the Underground Tombs of Palmyra," In Higuchi, Takayasu, Saito, Kiyohide(ed.) *Tomb F-Tomb of BWLH and BWRP-Southeast Necropolis Palmyra, Syria. Publication of Research Center for Silk Roadology* (Research Center for Silk Roadology), pp. 202–211.

Saito, Kiyohide and Toyooka, Takushi. 2003. "Digging an Underground Tomb of New Discovery at Palmyra Southeast Necropolis 2002," *Reconstruction of the Ancient Orient in 2002-Proceedings of the 10<sup>th</sup> Annual Meeting of Excavation in West Asia* (Japanese Society for West Asian Archaeology)(in Japanese), pp. 75–80.

Higuchi, Takayasu. 2004. "The Palmyrene View of the Afterworld," *Collected Articles and Essays in Honour of His Highness Prince Micasa on the Occasion of His Eighty-Eighth Birthday* (Tousui Shobo Publishers)(in Japanese), pp. 616–628.

Higuchi, Takayasu and Saito, Kiyohide(ed.): "Tomb F-Tomb of BWLH and BWRP-South-east Necropolis Palmyra, Syria," *Publication of Research Center for Silk Roadology*. Volume 2 (Research Center for Silk Roadology).

Nakahashi, T., Funahashi, K., Koga, H., Yoshimura, K. 2002. "Human skeletal remains excavated from Tomb F in Palmyra" *Tomb F-Tomb of BWLH and BWRP-Southeast Necropolis Palmyra, Syria Publication of Research Center for Silk Roadology*. Volume 2 (Research Center for Silk Roadology), pp. 145–163.



Taibul Tomb sculptures stolen from Palmyra (DGAM).



Taibul Tomb sculptures stolen from Palmyra and now recovered (DGAM).



Taibul Tomb sculptures stolen from Palmyra and now recovered (DGAM).



Taibul Tomb sculptures stolen from Palmyra and now recovered (DGAM).



Taibul Tomb sculptures stolen from Palmyra and now recovered (DGAM).

## SHI 14-087

**Report Date:** November 28, 2014

**Site Name:** Bab al-Hadid (Bab al-Qanat) and “Suq al-Zeher” [presumably the Suq Bab al-Hadid], Aleppo, UNESCO World Heritage Site, Ancient City of Aleppo (See also SHI 14-015)

**Date of Incident:** 2012–present

**Location:** Northeast corner of the old city at Khandak Street. UNESCO WHS, Ancient City of Aleppo

**Coordinates:** 36°12'11.96"N, 37°10'2.35"E

**Site Description:** According to Gaube and Wirth, “Nordosttor der Stadt, alter Name auch Bab al-Qanat, Bauinschriften des Qansuh von 1509, Torbeschlag mit dem Namen des Qansuh von 1509.”<sup>10</sup> The market (suq) is located just inside the gate.

**Site Date:** Ayyubid — reign of Az-Zahir Ghazi (1172–1216 CE) and Al-Aziz Muhammad (r. 1216–1236 CE). Rebuilt in Mamluk Period.

**Source of Destruction:** Urban warfare

**Pattern:** Combat damage in the UNESCO WHS, Ancient City of Aleppo

**Monitoring Recommendations and Mitigation Measures:** ASOR SHI has already designated the Old City of Aleppo a high priority for monitoring.

### Sources:

#### Online Reporting:

APSA Website:

<http://apsa2011.com/index.php/en/provinces/aleppo/monuments/1035-aleppo-bab-al-hadid-souk-al-zeher.html>

#### Scholarly:

Gaube, Heinze and Eugen Wirth. 1984. *Aleppo*. (Wiesbaden: Dr. Ludwig Reichert), no. 309 (Bab al-Hadid).

Tabbaa, Yasser. 1997. *Constructions of Power and Piety in Medieval Aleppo* (The Pennsylvania State University Press), pp. 23-26.

---

<sup>10</sup> Gaube and Wirth 1984: 379, no. 309.



The Bab al-Hadid area prior to the destruction (APSA).



Before and after of the Bab al-Hadid destruction (APSA).





Recent photo of the Bab al-Hadid area (APSA).



Recent photo of damage in the Suq Bab al-Hadid (APSA).



Recent photo of damage in the Suq Bab al-Hadid (APSA).



Recent photo of damage in the Suq Bab al-Hadid (APSA).



Recent photo of damage in the Suq Bab al-Hadid (APSA).



Recent photo of damage in the Suq Bab al-Hadid (APSA).



Recent photo of damage in the Suq Bab al-Hadid (APSA).



Recent photo of damage in the Suq Bab al-Hadid (APSA).



Recent photo of damage in the Suq Bab al-Hadid (APSA).



Recent photo of damage in the Suq Bab al-Hadid (APSA).



Recent photo of damage in the Suq Bab al-Hadid (APSA).



Recent photo of damage in the Suq Bab al-Hadid (APSA).



Recent photo of damage in the Suq Bab al-Hadid (APSA).



Recent photo of damage in the Suq Bab al-Hadid (APSA).



Recent photo of damage to the Bab al-Hadid (APSA).



Recent photo of damage in the Suq Bab al-Hadid (APSA).





Recent photo of damage in the Suq Bab al-Hadid (APSA).



Recent photo of damage in the Suq Bab al-Hadid (APSA).



Undated photo of the Suq Bab al-Hadid (APSA).



Undated photo of the Suq Bab al-Hadid (APSA).



Recent photo of damage in the Suq Bab al-Hadid (APSA).



Recent photo of damage in the Suq Bab al-Hadid (APSA).

## SHI 14-088

**Report Date:** November 28, 2014

**Site Name:** Shinshara/Khirbet Hass, UNESCO WHS Ancient Villages of Northern Syria

**Date of Incident:** Unspecified

**Location:** Idlib Governorate

**Coordinates:** Lat. 35.640318, Lon. 36.569242

**Site Description:** According to Warwick Ball,<sup>11</sup>

...a vast area of ruins that includes the remains of no less than seven churches. There are also many monumental mausolea and a number of other domestic and public buildings, including a public assembly hall with a courtyard lined by Doric porticos.

**Site Date:** Byzantine

**Source of Destruction:** The DGAM reports,

Idlib Antiquities reported that many families have been displaced at [to] Shinsrah archaeological site, most of them were came from the neighborhoods countryside. The new residents live in the ruins of the historic Roman palaces [SIC, churchs, etc.] roofed with nylon [tarps] or thin metal boards [tin sheeting], and some of them built new rooms closed to the ancient walls.

It is worth mentioning, that Shinsrah one of the important sites dated from the Roman and Byzantine eras, it is located within the "Park of al Zawia Mountain", which is one of five parks includes about 38 villages registered in the list of "UNESCO" World Heritage in Ancient villages in North of Syria file and currently classify as site endangered.

**Pattern:** Use of built heritage for shelter by IDPs, particularly in the Dead Cities region.

**Monitoring Recommendations and Mitigation Measures:** SHI has already designated the Dead Cities as a high priority for monitoring and remediation efforts.

### Sources:

Online Reporting:

DGAM Website: <http://www.dgam.gov.sy/index.php?d=314&id=1513>

---

<sup>11</sup> Ball 2007: 185.

Scholarly:

Ball, Warwick. 2007. *Syria. A Historical and Architectural Guide*. (Interlink Books), p. 185.



Digital Globe screen capture of the IDP settlement at Shinshara — note the blue tarps (Digital Globe, Oct. 12, 2013).



IDP settlement at Shinshara (left background) (APSA).



IDP settlement at the Byzantine site of Shinshara, Dead Cities region (APSA).



IDP settlement at the Byzantine site of Shinshara, Dead Cities region (APSA).



IDP settlement at the Byzantine site of Shinshara, Dead Cities region (APSA).



IDP settlement at the Byzantine site of Shinshara, Dead Cities region (APSA).





IDP settlement at the Byzantine site of Shinshara, Dead Cities region (APSA).



IDP settlement at the Byzantine site of Shinsharah, Dead Cities region (APSA).



IDP settlement at the Byzantine site of Shinsharah, Dead Cities region (APSA).



IDP settlement at the Byzantine site of Shinshara, Dead Cities region (APSA).



IDP settlement at the Byzantine site of Shinshara, Dead Cities region (APSA).

## SHI 14-089

**Report Date:** November 28, 2014

**Site Name:** Tell al-Seman (Tell Zamyoun)

**Date of Incident:** Mosaic discovered May 11, 2014

**Location:** Hama Governorate north of modern Tayyibat al-Imam

**Coordinates:** Lat. 35.287144, Lon. 36.722218

**Site Description:** According to the APSA website,

Information released by the Tayyibat al-Imam Media Office suggest that rebels of the opposition found a mosaic panel on the hill where the Checkpoint of Tell al-Seman was situated, about 1 km north of Tybet el-Imam. On May 11 2014, the rebels re-took control of the Checkpoint and they built a dyke using a bulldozer and broke the corner of a mosaic panel discovered by chance. Based on the latest information this panel which measures approximately 5 x 5 m was still present on the spot when the army of the regime resumed control of the Checkpoint. Since then the destiny of this mosaic is unknown and no new information has been released.

**Site Date:** Probably Roman/Byzantine

**Source of Destruction:** Militarization of archaeological site.

**Pattern:** Militarization of archaeological site.

**Monitoring Recommendations and Mitigation Measures:** APSA will continued to follow this case.

**Sources:**

Online Reporting:

APSA Website: <http://apsa2011.com/index.php/en/provinces/hama/sites/1038-hama-tybet-al-seman.html>

Scholarly:



## SHI 14-090

**Report Date:** November 28, 2014

**Site Name:** Raqqa Museum

**Date of Incident:** November 25, 2014

**Location:** Modern Raqqa, Raqqa Governorate

**Coordinates:** Lat. 35.945867, Lon. 39.016744

**Site Description:** According to the DGAM,

The museum hosted in a historical building built in 1861 as a Seray Building (government building) and was founded as a museum in 1981, this museum curated large collections of the Ar-Raqqah province.

**Site Date:** Ottoman Seray converted to a provincial museum. Repository for collections of all time periods found in the Raqqa Governorate and headquarters of the Raqqa Department of Antiquities and Museums.

**Source of Destruction:** According to the DGAM,

A bomb dropped around the museum area resulting the damage to the main facades although complete damage to the doors and and [SIC] actual breakage of glass windows occurred. Ar-Raqqah Antiquities reported that the heavy damage occurred in main facade facing to the Arafat Square.

**Pattern:** Airstrike damage. There is no mention in the DGAM reporting that this was a SARG airstrike.

**Monitoring Recommendations and Mitigation Measures:** ASOR SHI has already designated Raqqa a high priority for monitoring and remediation efforts.

### Sources:

#### Online Reporting:

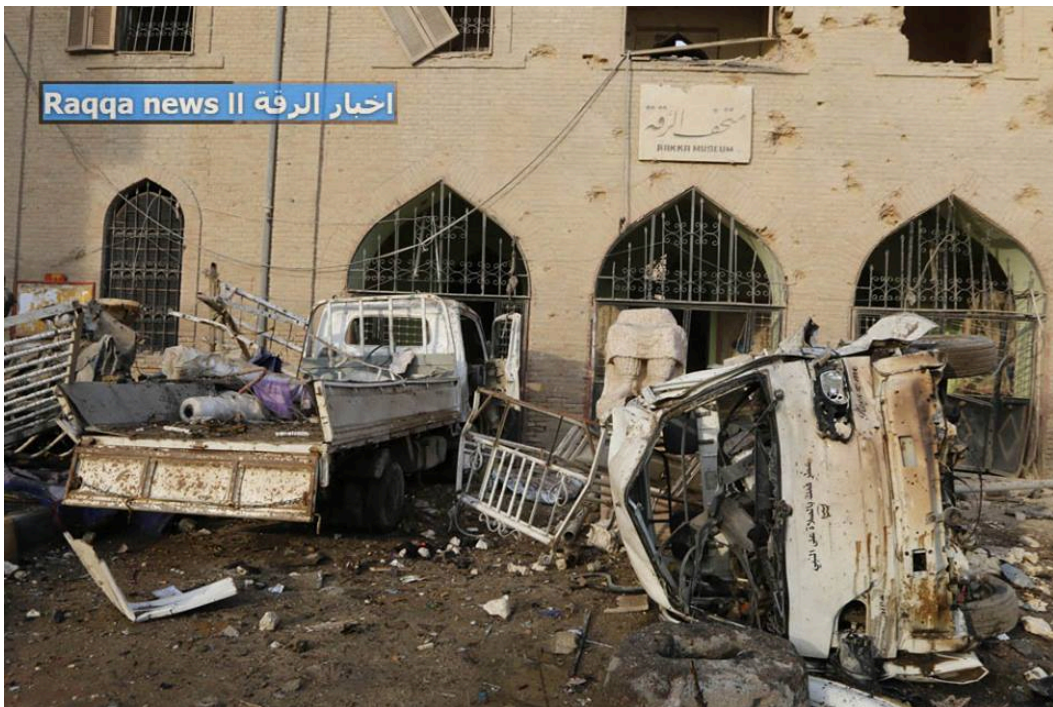
APSA Website: <http://www.apsa2011.com/index.php/en/provinces/ar-raqqah/museums/1042-raqqah-musee-archeologique-2.html>

DGAM Website: <http://www.dgam.gov.sy/index.php?d=314&id=1517>

#### Scholarly:



Airstrike damage to Arafat Square and the façade of the Raqqa Museum (left) (DGAM).



Airstrike damage to Arafat Square and the façade of the Raqqa Museum (DGAM).



Airstrike damage to Arafat Square and the façade of the Raqqa Museum (right) (DGAM).



Airstrike damage to Arafat Square and the façade of the Raqqa Museum (left) (DGAM).





The Raqqa Museum prior to the airstrike (DGAM).



The Raqqa Museum prior to the airstrike (DGAM).



Airstrike damage to Arafat Square, the surrounding market, and the Raqqa Museum (DGAM).



Airstrike damage to Arafat Square and the façade of the Raqqa Museum (DGAM).

## SHI 14-091

**Report Date:** November 28, 2014

**Site Name:** Balyun (Balion, Baluon)

**Date of Incident:** Unspecified

**Location:** Balion is a village in the Jebel Zawiyah in Idlib Governorate

**Coordinates:** Modern town Ca. 35.695608, 36.508486, Site ca. Lat. 35.692414, Lon. 36.487593

**Site Description:** One of the many sites of the Dead Cities region. The site lies northwest of Al-Bara and just east of Serjilla.

**Site Date:** Roman/Byzantine

**Source of Destruction:** DGAM reports,

Antiquities of Idlib reported that Balyun archaeological site (which is rich with its archaeological caves and Roman water reservoirs), suffer from illegal buildings built close to the ancient walls, the archaeological tank turned into a garbage dump, in addition to systematic illegal excavations that took place in the site. The digs revealed a cave excavated recently and drilling tools [excavation picks] still in place.

Balion and the surrounding area have seen particularly intense fighting in 2014.

**Pattern:** Illegal construction and excavations — the excavations shown in the photos seem to be associated with waste water drainage and house construction rather than antiquities looting.

**Monitoring Recommendations and Mitigation Measures:** —

**Sources:**

Online Reporting:

DGAM Website: <http://www.dgam.gov.sy/index.php?d=314&id=1519>

Scholarly:



Balyun in Idlib Governorate (DGAM).



Illegal excavation at Balyun, Idlib Governorate (DGAM).



Illegal construction and excavation at Balyun, Idlib Governorate (DGAM).



Illegal construction at Balyun, Idlib Governorate (DGAM).



Illegal construction and excavation at Balyun, Idlib Governorate (DGAM).

**SHI 14-092**

**Report Date:** November 28, 2014

**Site Name:** Kafr Hawar

**Date of Incident:** Unspecified

**Location:** Idlib Governorate

**Coordinates:** Site is as yet not located

**Site Description:** Unavailable

**Site Date:** Presumably Byzantine

**Source of Destruction:** Illegal construction

**Pattern:** Illegal construction in Dead Cities region

**Monitoring Recommendations and Mitigation Measures:** —

**Sources:**

Online Reporting:

DGAM Website: <http://www.dgam.gov.sy/index.php?d=314&id=1519>

Scholarly:





Kafr Hawar.



Kafr Hawar

© DGAM -Nov 2014



Kafr Hawar

**SHI 14-093**

**Report Date:** November 28, 2014

**Site Name:** Tell Ramla

**Date of Incident:** Unspecified

**Location:** Idlib Governorate

**Coordinates:** Site is as yet not located

**Site Description:** Unavailable

**Site Date:** —

**Source of Destruction:** Illegal excavation with a bulldozer

**Pattern:** —

**Monitoring Recommendations and Mitigation Measures:** —

**Sources:**

Online Reporting:

DGAM Website: <http://www.dgam.gov.sy/index.php?d=314&id=1519>

Scholarly: