



# QGIS

## Editing Data Layers (02.10)

William Reynolds

Jared Koller

# ABOUT QGIS

QGIS is a free and open source Geographic Information System (GIS), or geodatabase, licensed under the GNU General Public License. QGIS runs on Linux, Unix, Mac OSX, Windows and Android and supports numerous vector, raster, and database formats and functionalities. QGIS users can view, edit, and analyze spatial and locational information through its free software toolkit.

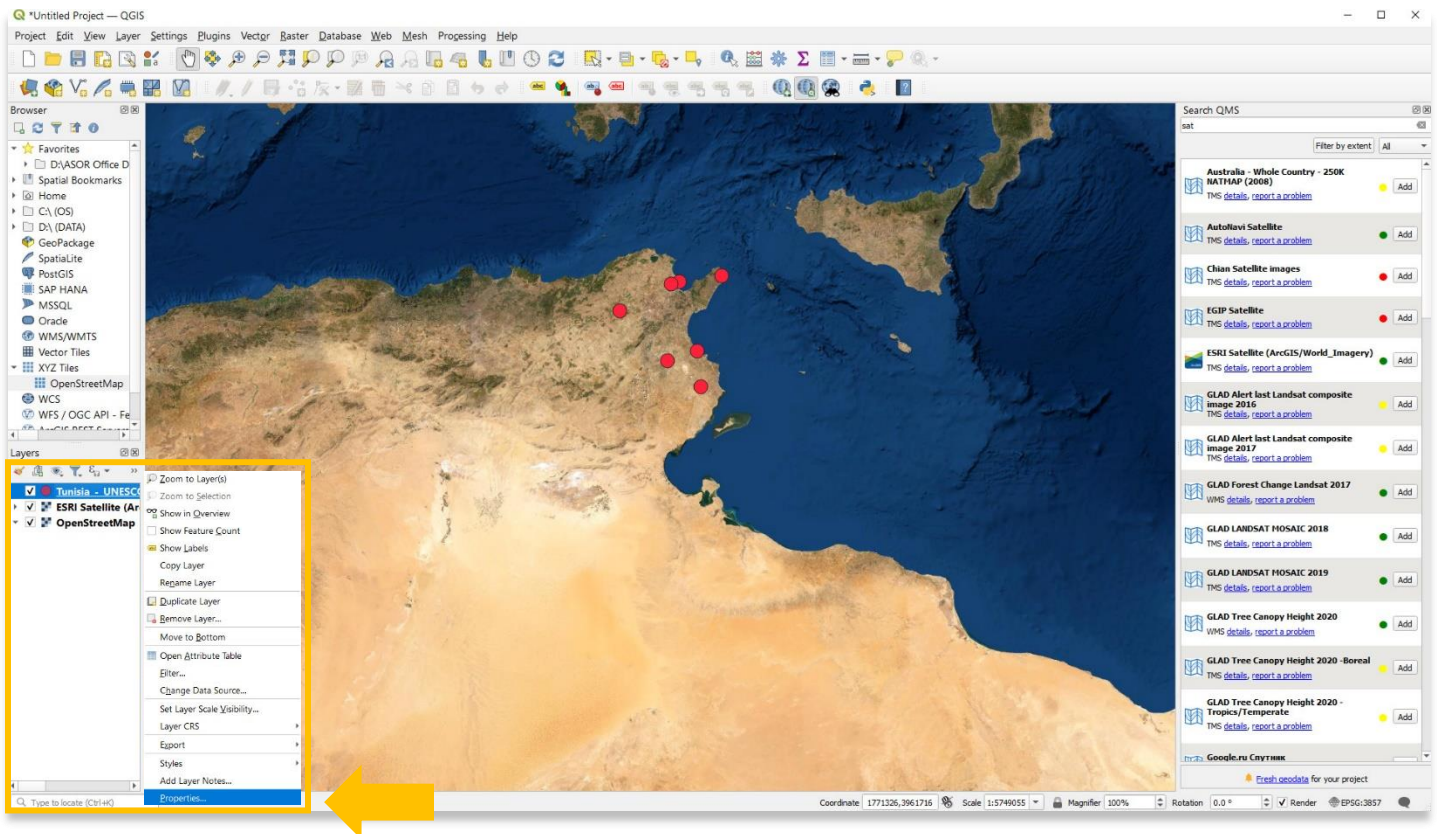
Download QGIS here: <https://qgis.org/>

Documentation: <https://docs.qgis.org/3.16/en/docs/index.html>

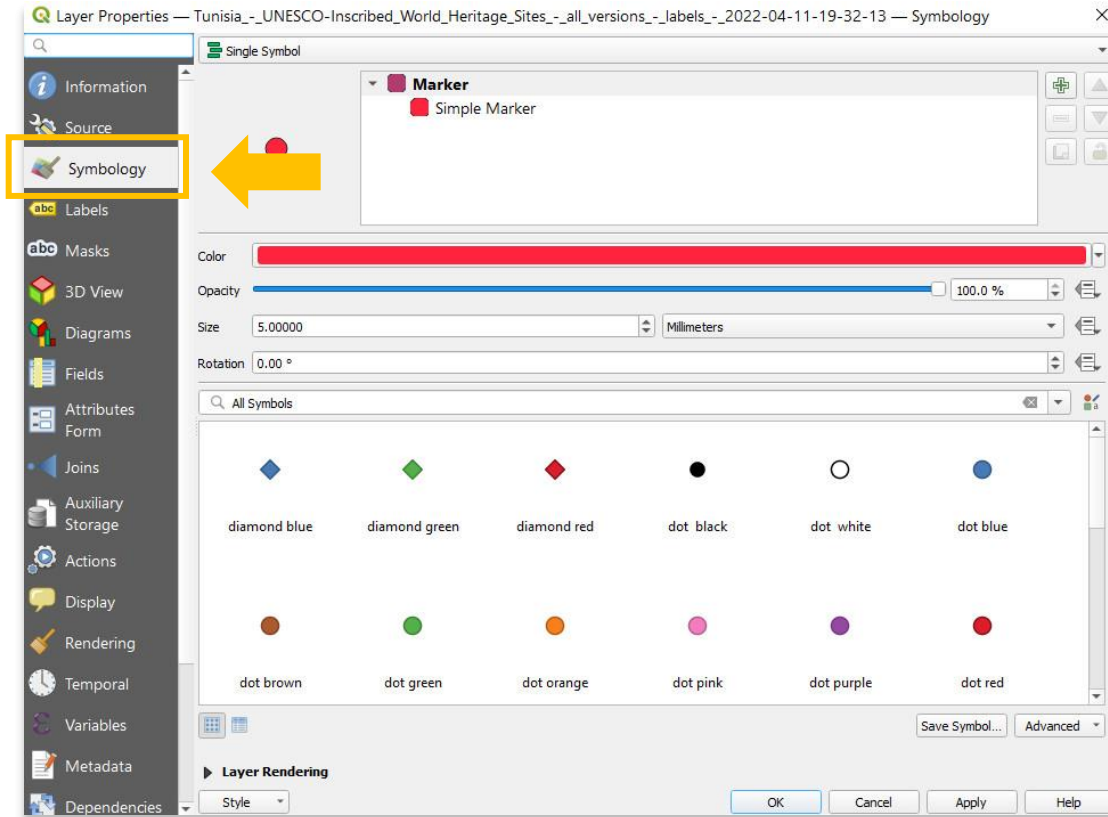
This ASOR Tutorial (02.10) will cover how to edit data layers in QGIS.

## EDITING DATA LAYERS

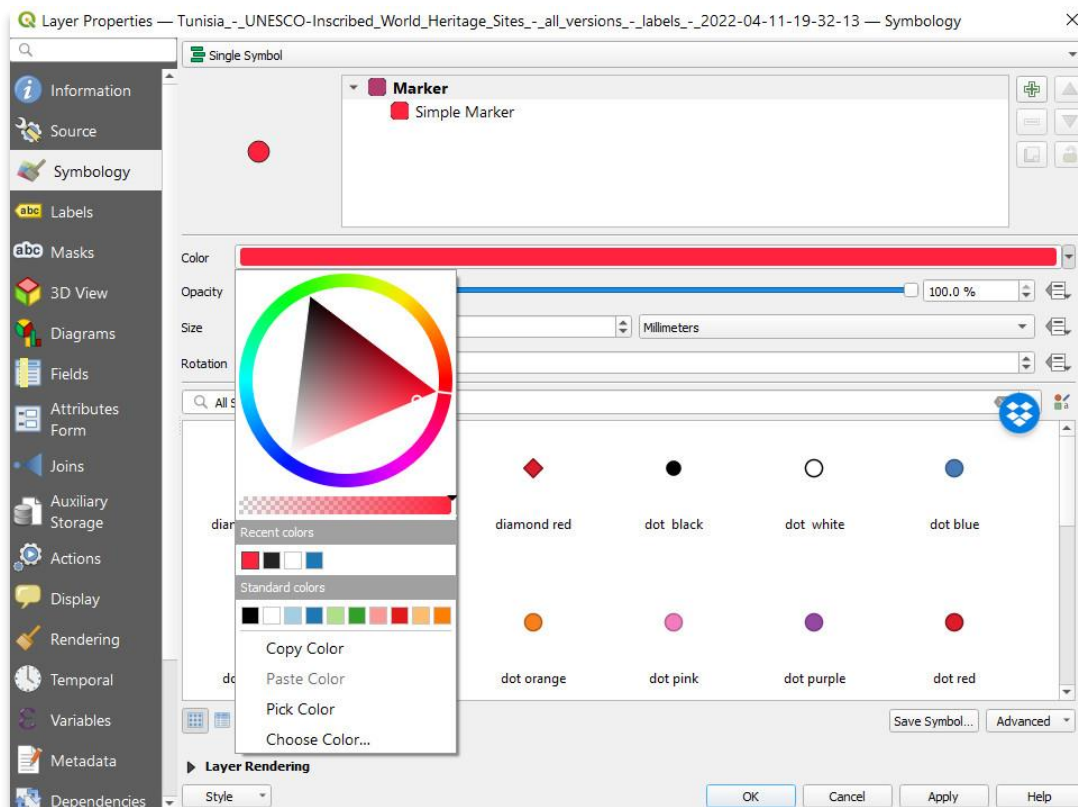
1. To edit a data layer, double click on the specific layer you wish to edit in the **Layer Panel**. Alternatively, you can right click on the layer and select **Properties**.



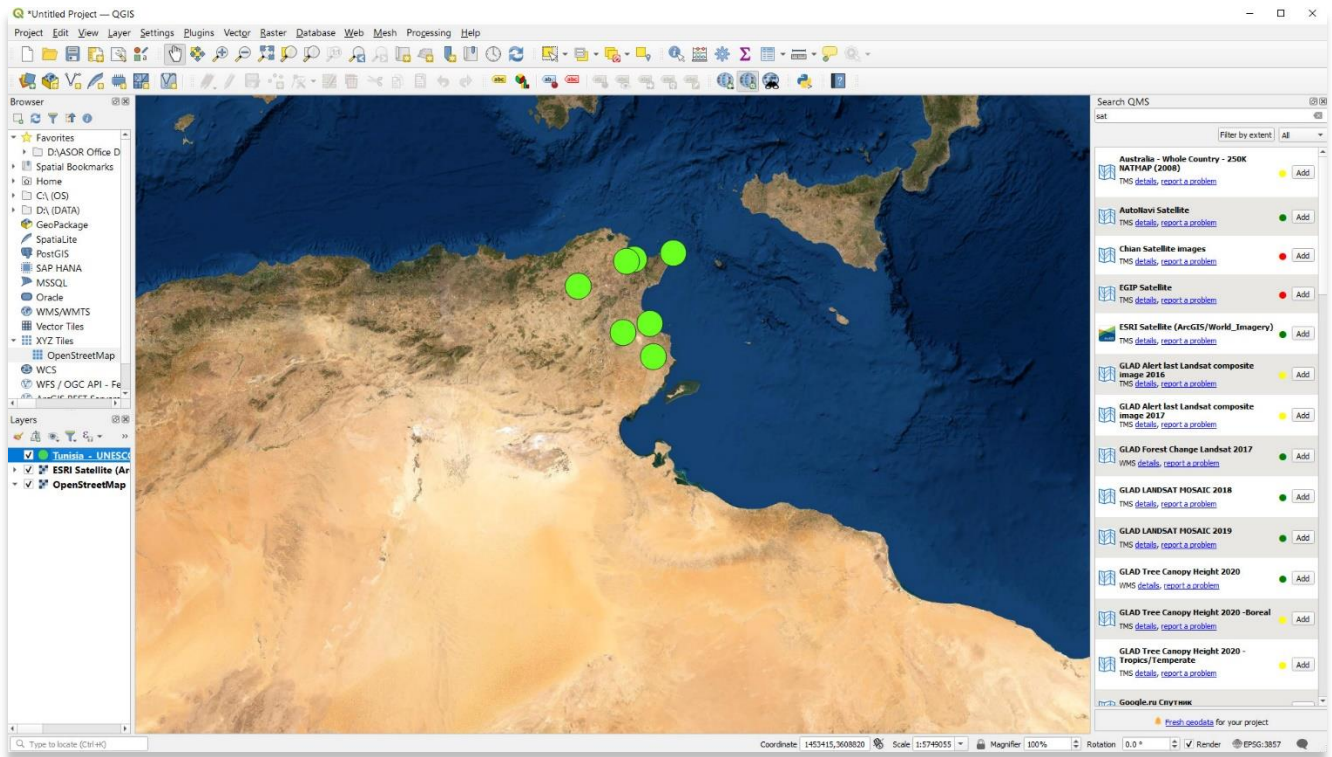
2. A pop-up window will appear. You can use the menu bar on the left for different purposes. Select **Symbology**.



3. Users can adjust the size, color, and opacity of points, lines, and polygons through the **Symbology** tab.



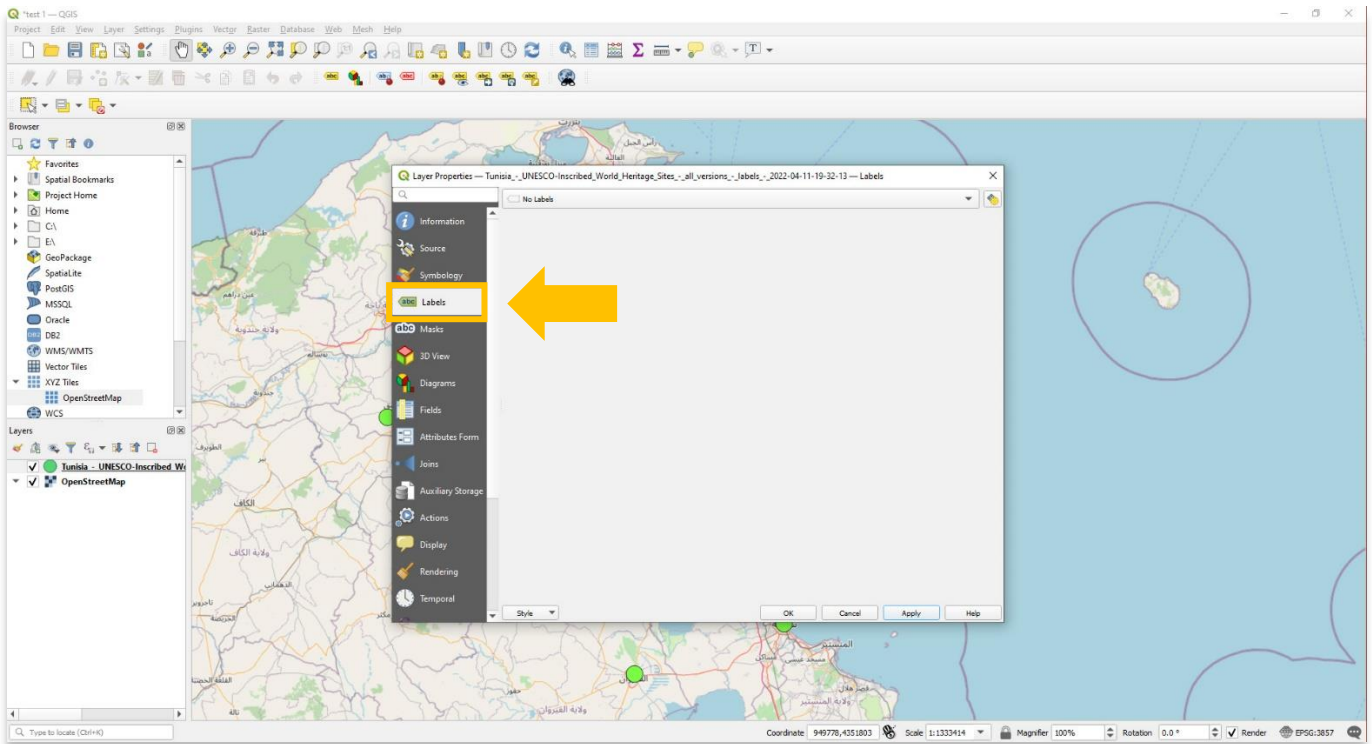
4. Once done, press **OK** to view the changes made to your layer.



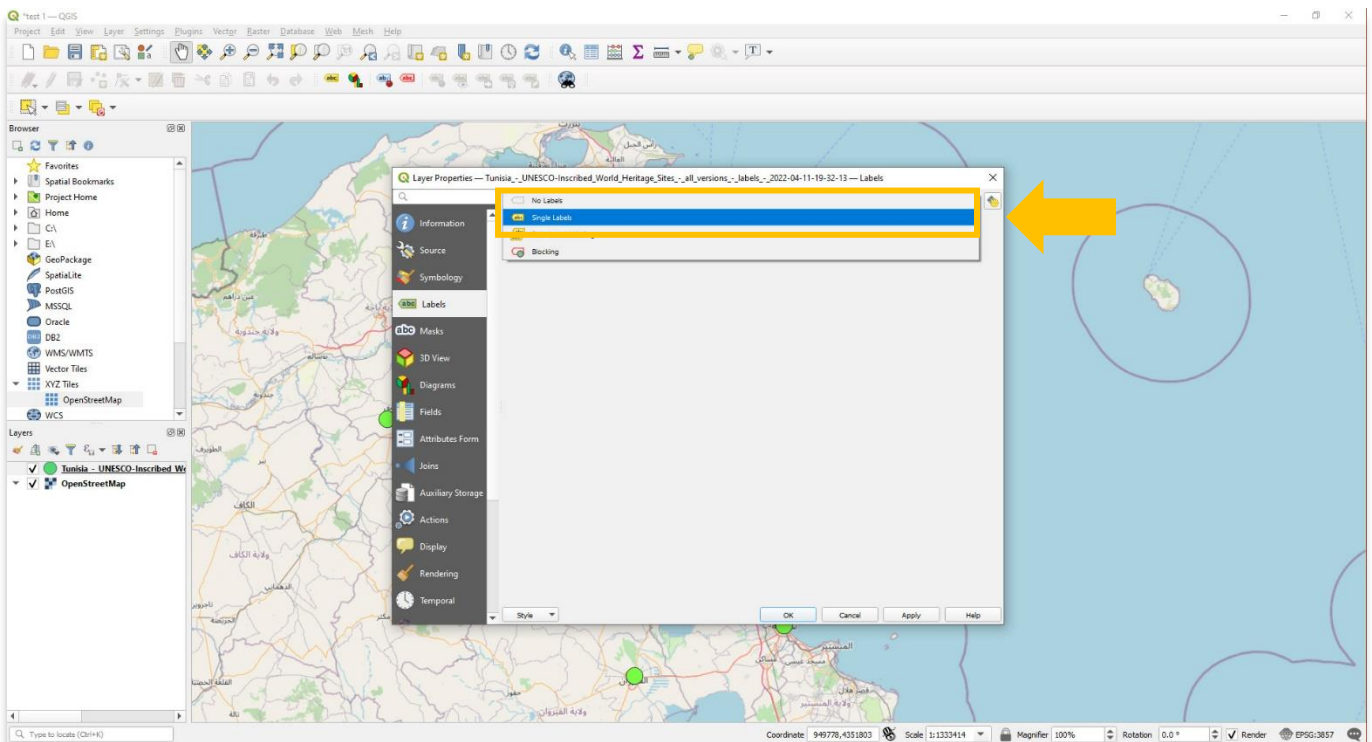


## ADDING LABELS

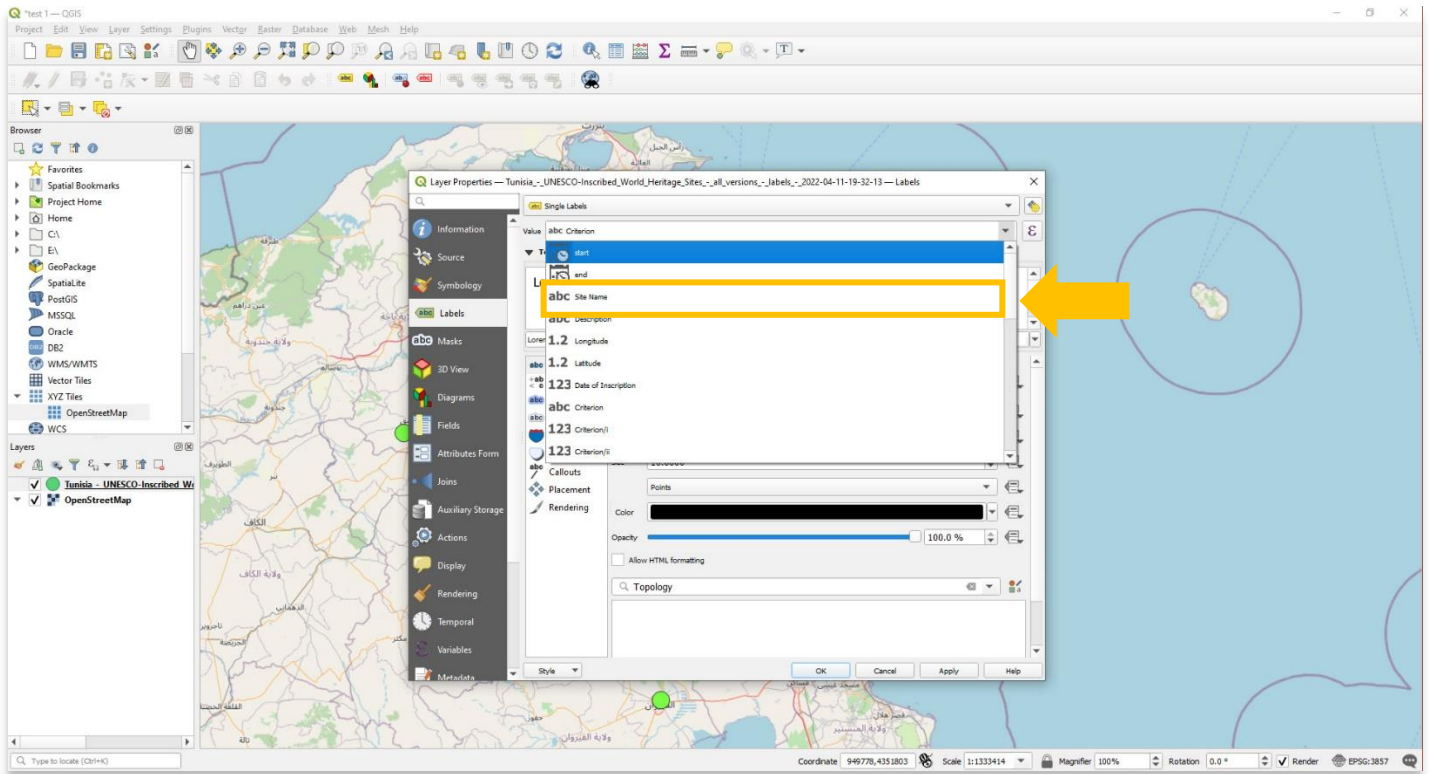
- Users can add labels to any layer. Labels are taken from the Attribute Table. **Double-click** on the layer to open the Layer Properties. Select **Labels** in the right menu.



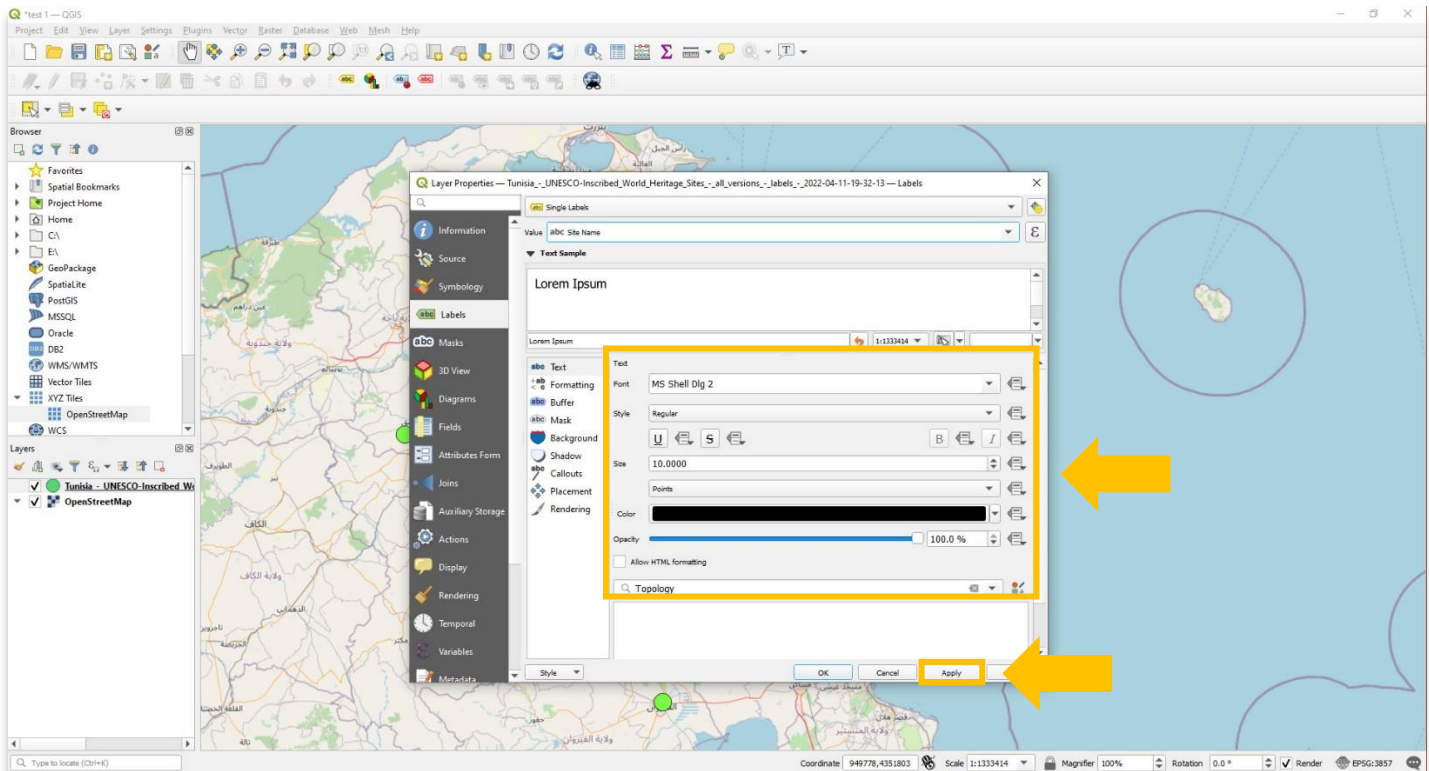
- Choose **Single Label** from the drop-down menu.



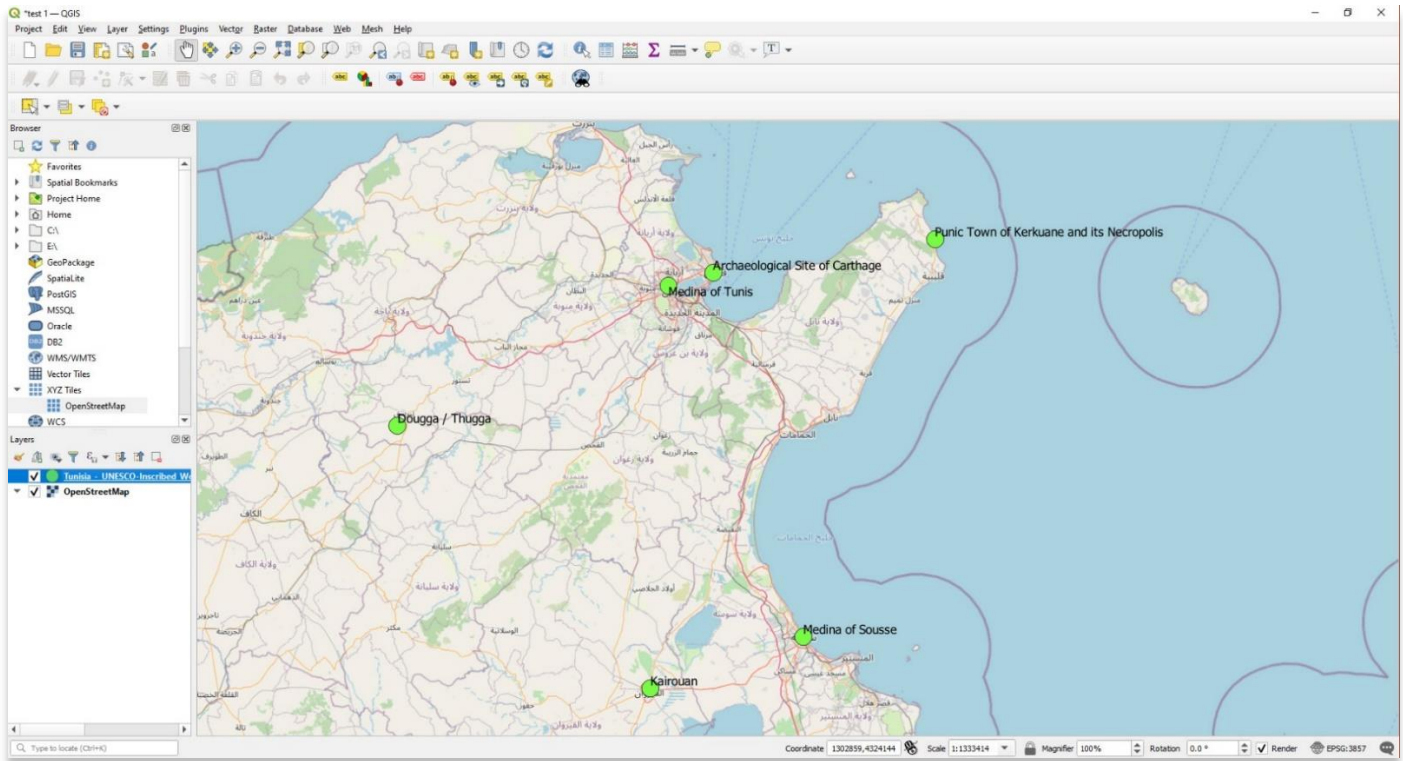
7. Select the value you wish to display as a label on your map. In this example, choose **Site Name**.



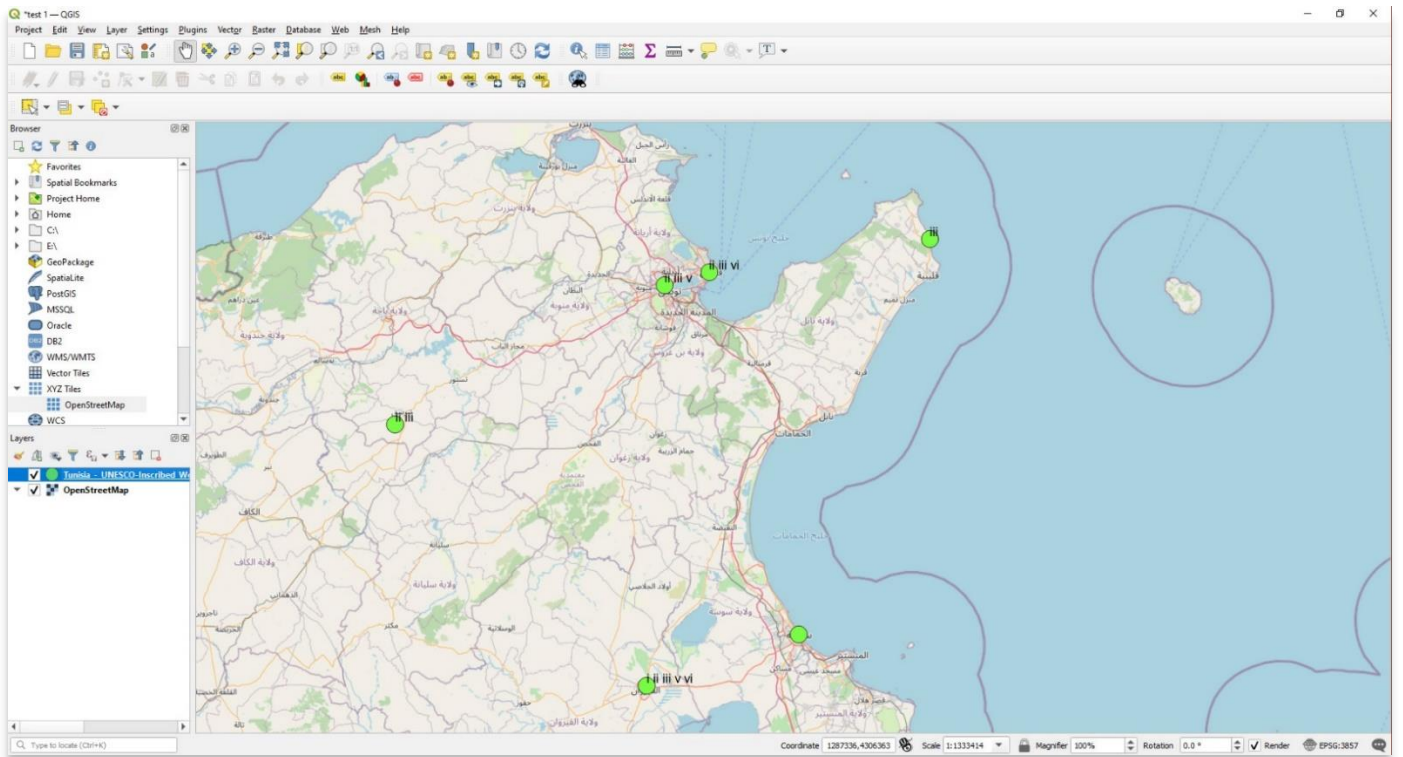
8. Users can style the label font, size and, position before selecting **Apply**.



9. Close the **Layer Properties**, and you will now see labels for every point for the Tunisian UNESCO Heritage Site point layer.

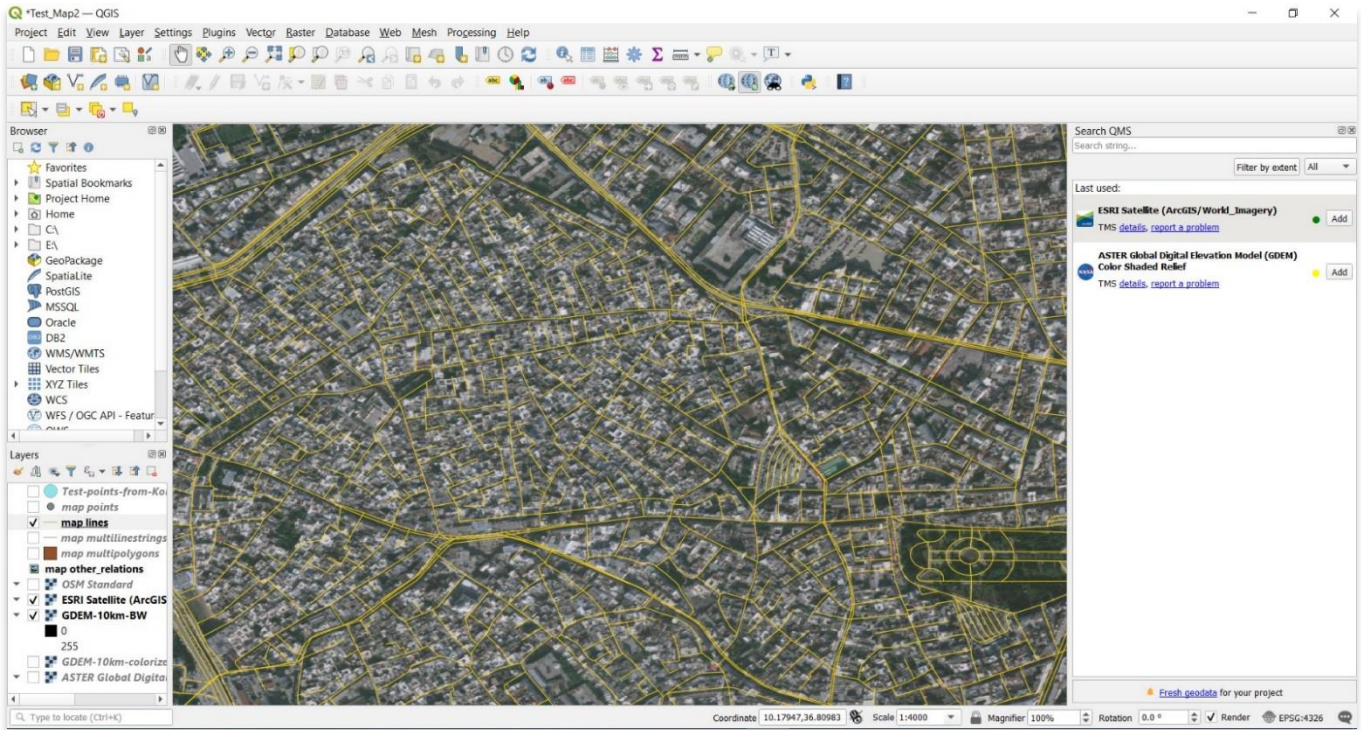


10. Repeat steps 5-9 in this tutorial to change the layer value or design of each label. In the below example, the map is displaying criteria fulfilled for each UNESCO site.





- Any type of layer is editable in QGIS, including vectors, rasters, and elevation models. Significant thought should be put into how to design and effectively convey spatial information in GIS, especially when creating maps or visualizations to share.



For more detailed information on anything within this tutorial, please visit QGIS Documentation:

<https://docs.qgis.org/3.16/en/docs/index.html>



**VIEW ALL ASOR TUTORIALS FOR FREE**

[asor.org/chi/chi-tutorials](https://asor.org/chi/chi-tutorials)